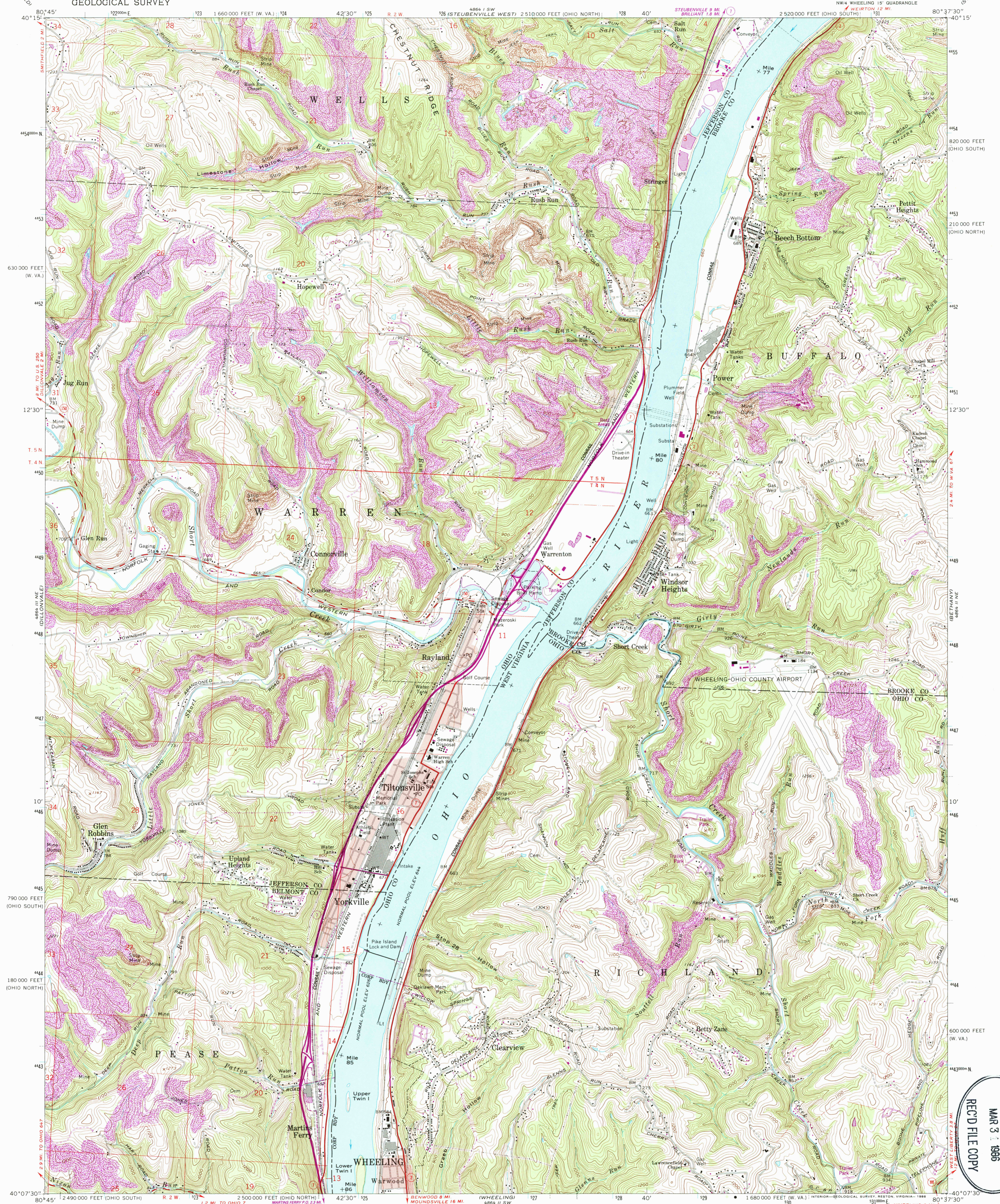
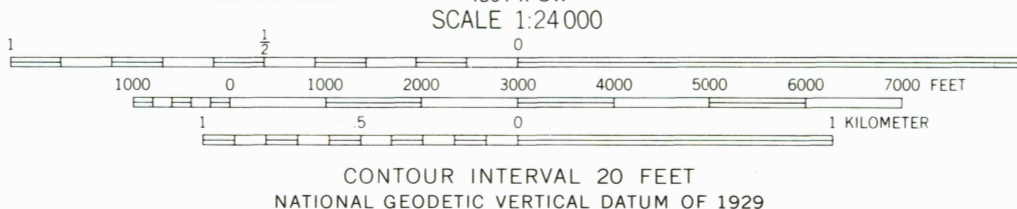
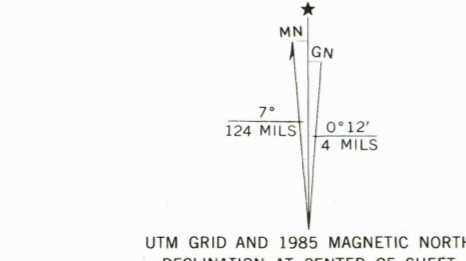


UNITED STATES
DEPARTMENT OF THE INTERIOR
GEOLOGICAL SURVEY

TILTONSVILLE QUADRANGLE
OHIO - WEST VIRGINIA
7.5 MINUTE SERIES (TOPOGRAPHIC)



Maped, edited, and published by the Geological Survey
Revised in cooperation with State of Ohio agencies
Control by USGS, NOS/NOAA, and USCE
Topography by photogrammetric methods from aerial photographs
taken 1954. Field checked 1957. Revised from aerial photographs
taken 1966. Field checked 1968
Polyconic projection. 10,000-foot grid ticks based on Ohio
coordinate system, north and south zones, and West Virginia
coordinate system, north zone
1000-meter Universal Transverse Mercator grid ticks,
zone 17, shown in blue
1927 North American Datum
To place on the predicted North American Datum 1983
move the projection lines 4 meters south and
16 meters west as shown by dashed corner ticks
The state boundary as shown represents the approximate position of
the low water line as determined from U. S. Corps of Engineers
Ohio River Charts, surveyed 1913, and supplementary information
Ohio area lies within the Old Seven Ranges. Land lines
based on the Ohio River Base



ROAD CLASSIFICATION
Primary highway, all weather, hard surface
Secondary highway, all weather, hard surface
Unimproved road, fair or dry weather
State Route

TILTONSVILLE, OHIO - W. VA.
NW4 WHEELING 15' QUADRANGLE
40080-B6-TF-024

1968
PHOTOREVISED 1985
DMA 4864 II NW - SERIES V852

THIS MAP COMPLIES WITH NATIONAL MAP ACCURACY STANDARDS
FOR SALE BY U.S. GEOLOGICAL SURVEY, RESTON, VIRGINIA 22092
A FOLDER DESCRIBING TOPOGRAPHIC MAPS AND SYMBOLS IS AVAILABLE ON REQUEST

Revisions shown in purple and woodland compiled in cooperation
with State of Ohio agencies from aerial photographs taken
1982 and other sources. This information not field checked
Map edited 1985

USGS AND HISTORICAL MAP
MAR 3 1986
REC'D FILE COPY