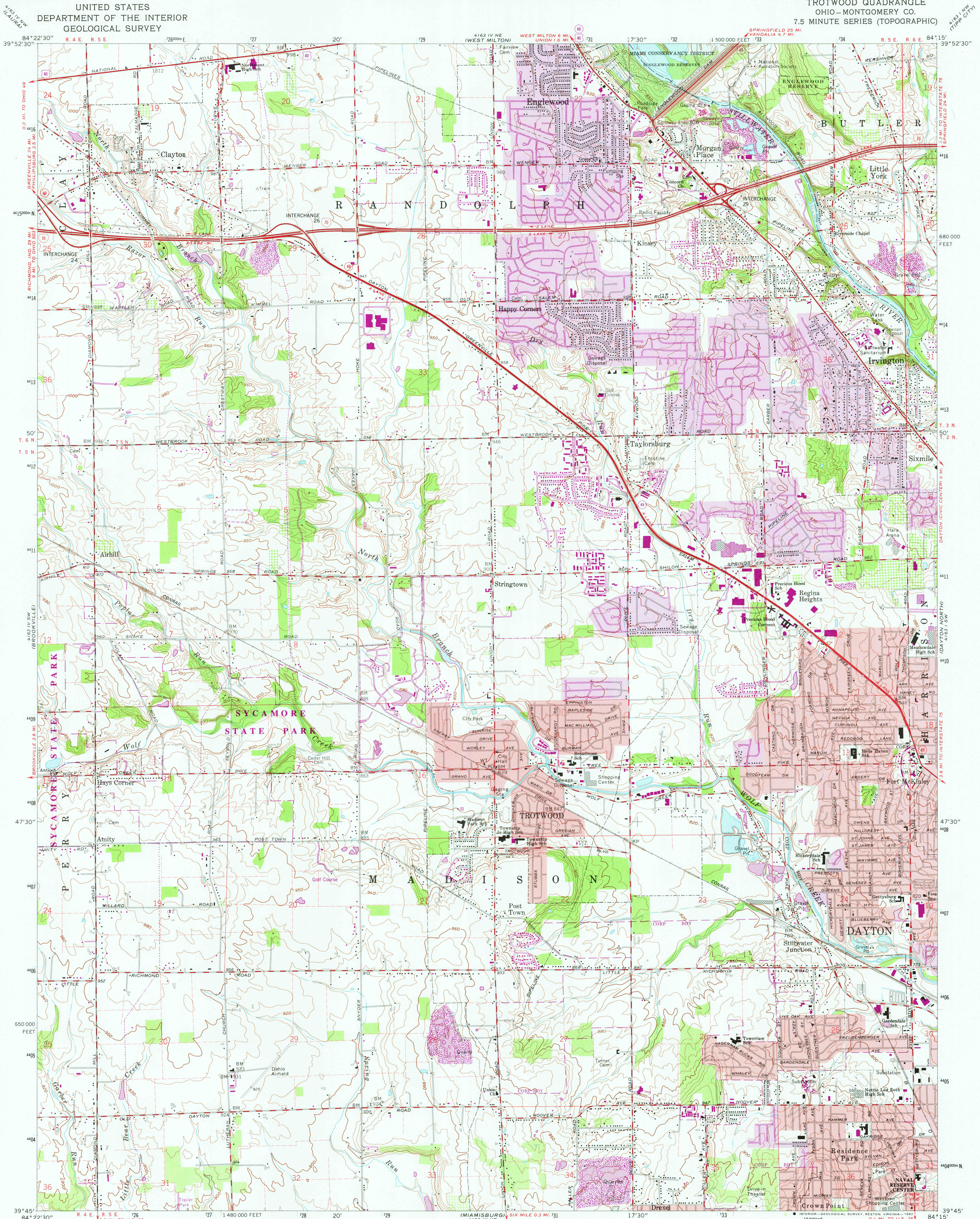
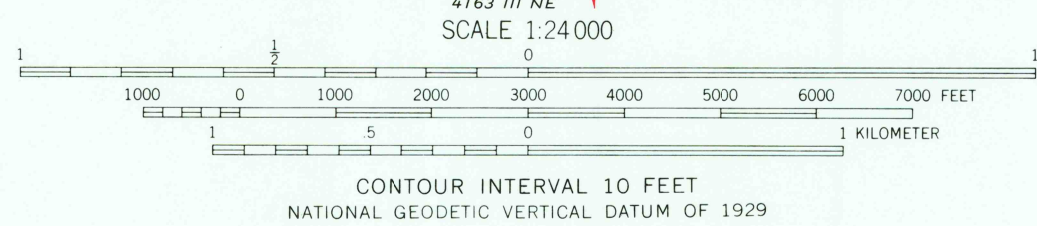


UNITED STATES
DEPARTMENT OF THE INTERIOR
GEOLOGICAL SURVEY

TROTWOOD QUADRANGLE
OHIO - MONTGOMERY CO.
7.5 MINUTE SERIES (TOPOGRAPHIC)



Mapped, edited, and published by the Geological Survey
in cooperation with Army Map Service
Revised in cooperation with State of Ohio agencies
Control by USGS and NOS/NOAA
Topography by photogrammetric methods from aerial photographs
taken 1954. Field checked 1955. Revised 1965.
Polyconic projection. 10,000-foot grid ticks based on Ohio
coordinate system, south zone. 1000-meter Universal Transverse
Mercator grid ticks, zone 16, shown in blue. 1927 North
American Datum. To place on the predicted North American
Datum 1983 move the projection lines 2 meters south and 6
meters west as shown by dashed corner ticks.
Fine red dashed lines indicate selected fence and field lines where
generally visible on aerial photographs. This information is unchecked
Red tint indicates areas in which only landmark buildings are shown
Areas covered by dashed light-blue pattern are subject to controlled
inundation to 876 feet
Entire area lies within the Miami River Survey. Land lines based
on the Great Miami River Base
There may be private inholdings within the boundaries of the
National or State reservations shown on this map



ROAD CLASSIFICATION
Heavy-duty ——— Light-duty ———
Medium-duty ——— Unimproved dirt ———
Interstate Route U.S. Route State Route

TROTWOOD, OHIO
N3945—W8415/7.5

THIS MAP COMPLIES WITH NATIONAL MAP ACCURACY STANDARDS
FOR SALE BY U.S. GEOLOGICAL SURVEY, RESTON, VIRGINIA 22092
A FOLDER DESCRIBING TOPOGRAPHIC MAPS AND SYMBOLS IS AVAILABLE ON REQUEST

Revisions shown in purple and woodland compiled in
cooperation with State of Ohio agencies from aerial
photographs taken 1979 and other sources. This
information not field checked. Map edited 1982
Purple tint indicates extension of urban areas

1965
PHOTOREVISED 1982
DMA 4163 IV SE—SERIES V852

2950