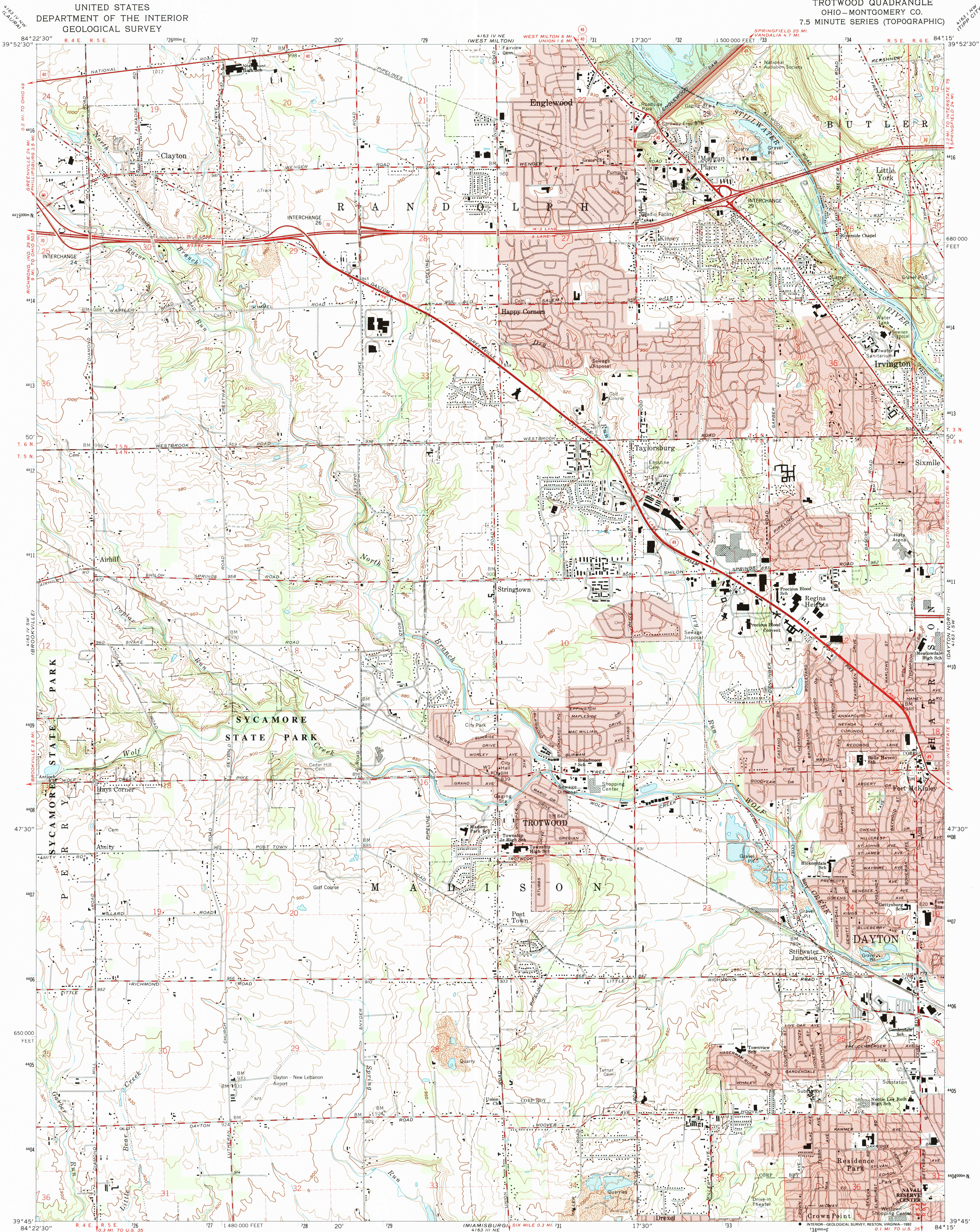


UNITED STATES  
DEPARTMENT OF THE INTERIOR  
GEOLOGICAL SURVEY

TROTWOOD QUADRANGLE  
OHIO—MONTGOMERY CO.  
7.5 MINUTE SERIES (TOPOGRAPHIC)



Mapped, edited, and published by the Geological Survey  
in cooperation with Army Map Service  
Revised in cooperation with State of Ohio agencies  
Control by USGS and NOS/NOAA

Topography by photogrammetric methods from aerial photographs  
taken 1954. Field checked 1955. Revised 1965

Polyconic projection. 10,000-foot grid ticks based on Ohio  
coordinate system, south zone. 1,000-meter Universal Transverse  
Mercator grid ticks, zone 16, shown in blue. 1927 North  
American Datum.

The difference between 1927 North American Datum and North  
American Datum of 1983 (NAD 83) for 7.5-minute intersections  
is given in USGS Bulletin 1875. The NAD 83 is shown by  
dashed corner ticks

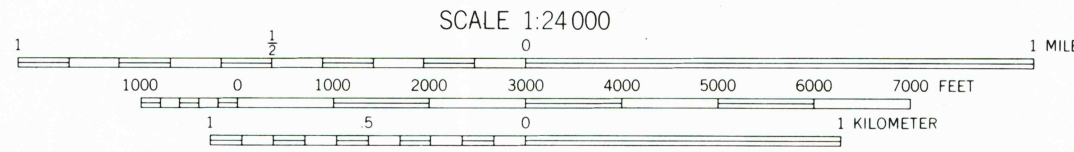
Fine red dashed lines indicate selected fence and field lines where  
generally visible on aerial photographs. This information is unchecked

Red tint indicates areas in which only landmark buildings are shown

Areas covered by dashed light-blue pattern are subject to controlled  
inundation to 876 feet

Entire area lies within the Miami River Survey. Land lines based  
on the Great Miami River Base

There may be private inholdings within the boundaries of the  
National or State reservations shown on this map



THIS MAP COMPLIES WITH NATIONAL MAP ACCURACY STANDARDS  
FOR SALE BY U. S. GEOLOGICAL SURVEY  
DENVER, COLORADO 80225 OR RESTON, VIRGINIA 22092  
A FOLDER DESCRIBING TOPOGRAPHIC MAPS AND SYMBOLS IS AVAILABLE ON REQUEST



ROAD CLASSIFICATION  
Heavy-duty ——— Light-duty ———  
Medium-duty ——— Unimproved dirt ———  
Interstate Route U. S. Route State Route

TROTWOOD, OHIO  
39084-G3-TF-024

1965  
REVISED 1992  
DMA 4163 IV SE—SERIES V852

Revisions compiled in cooperation with  
State of Ohio agencies from aerial  
photographs taken 1988 and other sources.  
Contours not revised. This information  
not field checked. Map edited 1992

