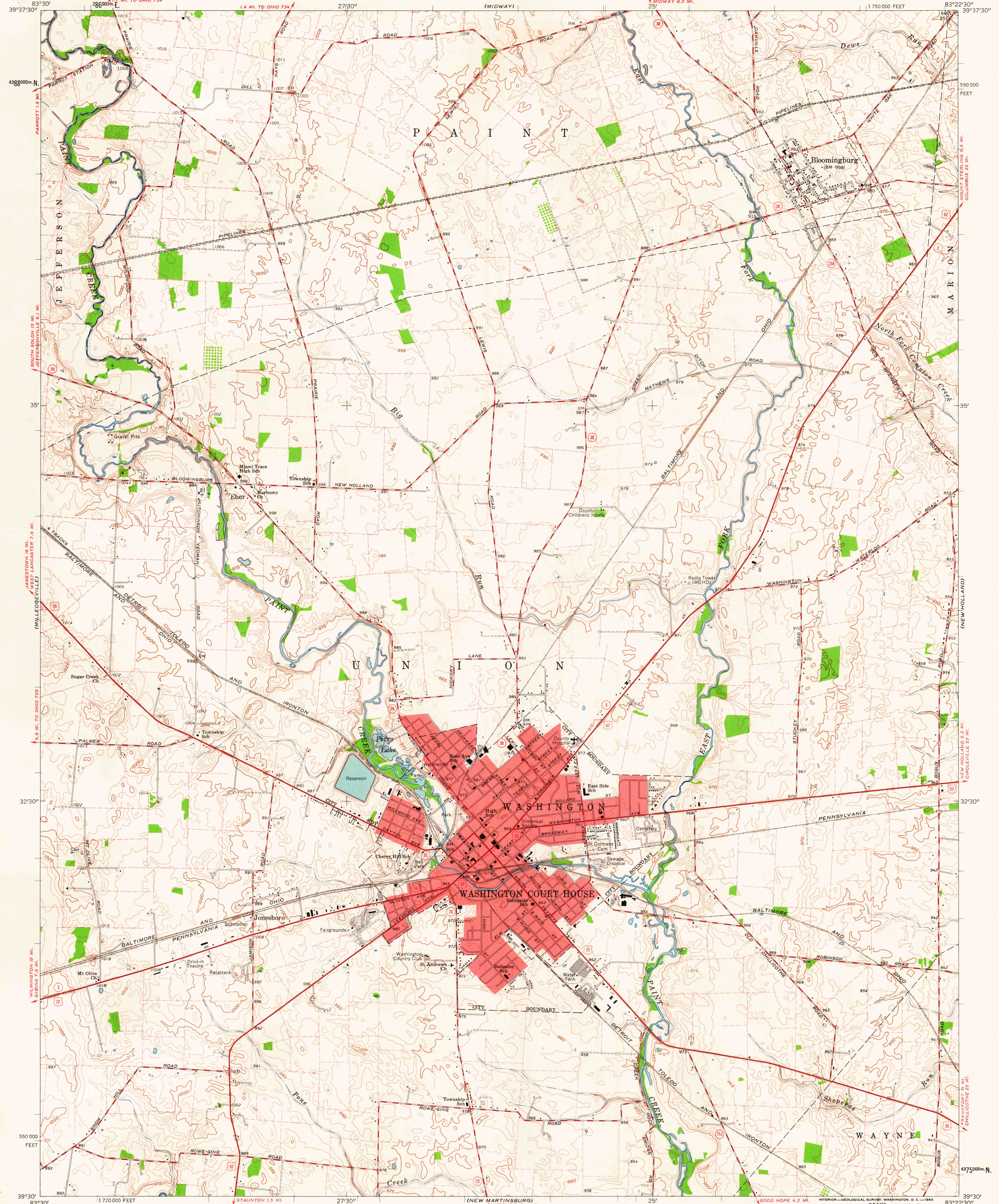


UNITED STATES
DEPARTMENT OF THE INTERIOR
GEOLOGICAL SURVEY

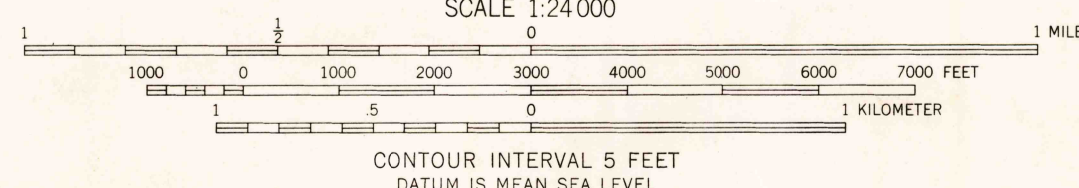
STATE OF OHIO
DEPARTMENT OF HIGHWAYS
DEPARTMENT OF NATURAL RESOURCES
DIVISION OF GEOLOGICAL SURVEY

WASHINGTON COURT HOUSE QUADRANGLE
OHIO—FAYETTE CO.
7.5 MINUTE SERIES (TOPOGRAPHIC)
SW 1/4 MOUNT STERLING 15' QUADRANGLE



Mapped, edited, and published by the Geological Survey
Control by USGS and USC&GS
Topography by photogrammetric methods from aerial
photographs taken 1960. Field checked 1961
Polyconic projection. 1927 North American datum
10,000-foot grid based on Ohio coordinate system, south zone
1000-meter Universal Transverse Mercator grid ticks,
zone 17, shown in blue
Red tint indicates areas in which only landmark buildings are shown
Fine red dashed lines indicate selected fence and field lines where
generally visible on aerial photographs. This information is unchecked
Entire area lies within the Virginia Military District

APPROXIMATE MEAN
DECLINATION, 1961



USGS
Historical File
Topographic Division



ROAD CLASSIFICATION
Heavy-duty road: solid red line
Light-duty road: dashed red line
Medium-duty road: solid red line with cross-ticks
Unimproved dirt road: dashed red line with cross-ticks
U.S. Route: red line with shield
State Route: red line with circle

WASHINGTON COURT HOUSE, OHIO
SW 1/4 MOUNT STERLING 15' QUADRANGLE
N 3930—W 8322.5/7.5

1961

THIS MAP COMPLIES WITH NATIONAL MAP ACCURACY STANDARDS
FOR SALE BY U. S. GEOLOGICAL SURVEY, WASHINGTON 25, D. C.
A FOLDER DESCRIBING TOPOGRAPHIC MAPS AND SYMBOLS IS AVAILABLE ON REQUEST

MAY 21 1963

2910