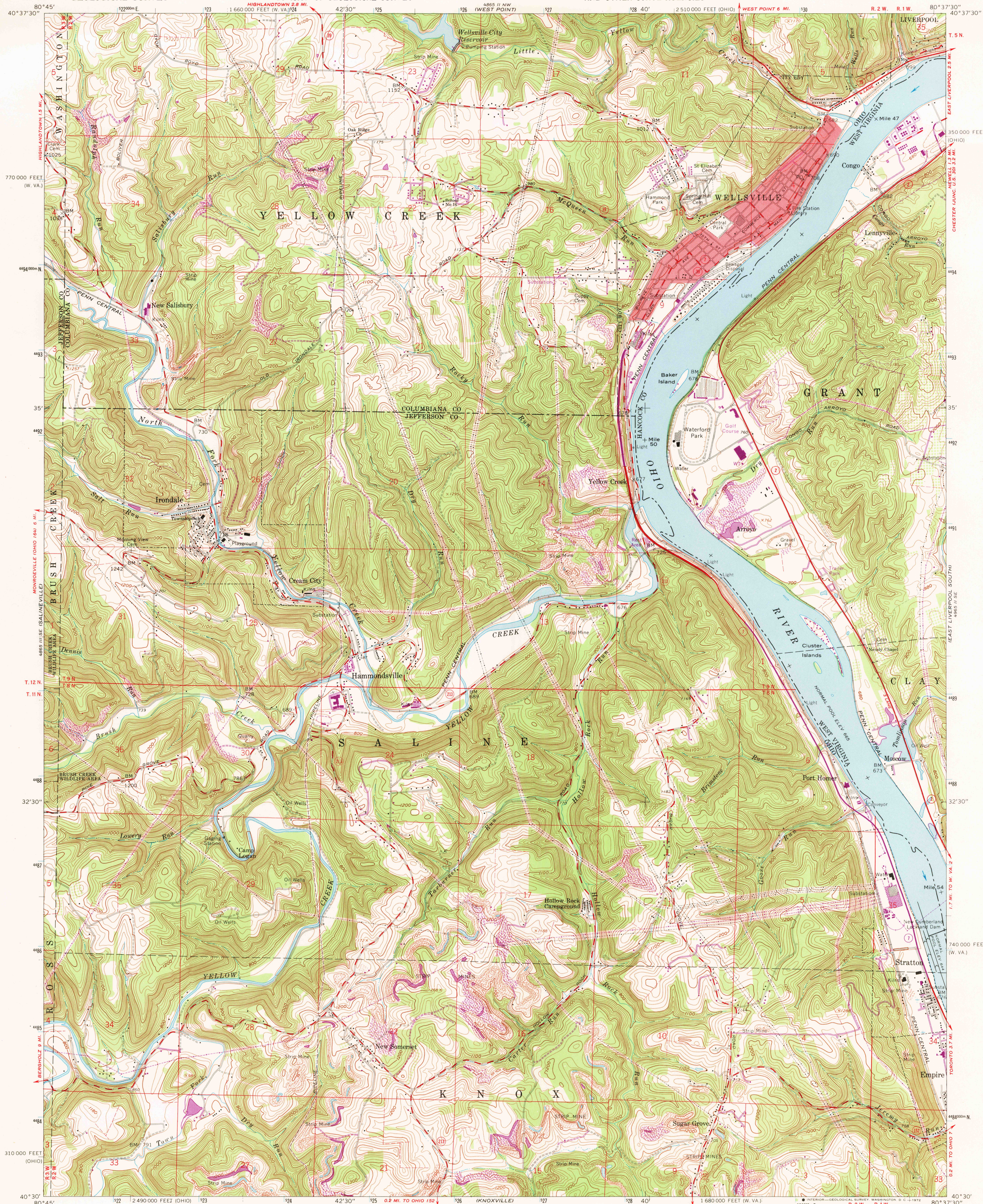


UNITED STATES
DEPARTMENT OF THE INTERIOR
GEOLOGICAL SURVEY

STATE OF OHIO
DEPARTMENT OF HIGHWAYS
DEPARTMENT OF NATURAL RESOURCES
DIVISION OF GEOLOGICAL SURVEY

STATE OF WEST VIRGINIA
REPRESENTED BY THE
STATE OF WEST VIRGINIA GEOLOGICAL SURVEY
AND OTHER STATE AGENCIES

WELLSVILLE QUADRANGLE
OHIO-WEST VIRGINIA
7.5 MINUTE SERIES (TOPOGRAPHIC)



Mapped, edited, and published by the Geological Survey

Control by USGS and USC&GS

Topography by photogrammetric methods from aerial photographs taken 1956. Field checked 1960

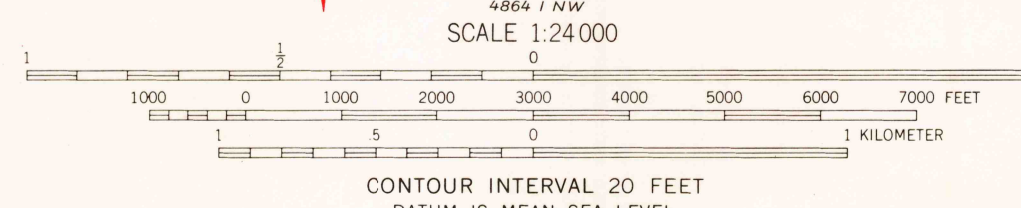
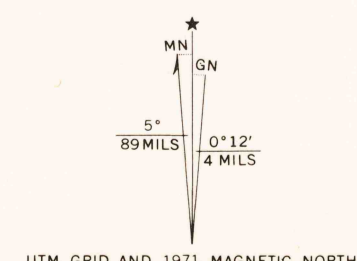
Polyconic projection. 1927 North American datum. 10,000-foot grids based on Ohio coordinate system, north zone, and West Virginia coordinate system, north zone. 1000-meter Universal Transverse Mercator grid ticks, zone 17, shown in blue

The state boundary as shown represents the approximate position of the low water line as determined from U. S. Corps of Engineers Ohio River charts, surveyed 1913, and supplementary information

Red tint indicates area in which only landmark buildings are shown

Fine red dashed lines indicate selected fence and field lines where generally visible on aerial photographs. This information is unchecked

Ohio river line within the Old Shaw Range



ROAD CLASSIFICATION	
Heavy duty	Light duty
Medium duty	Unimproved dirt
	State Route

WELLSVILLE, OHIO-W. VA.

N4030-W8037.5/7.5

1960
PHOTOREVISED 1971
AMS 4865 II SW-SERIES V882

THIS MAP COMPLIES WITH NATIONAL MAP ACCURACY STANDARDS
FOR SALE BY U. S. GEOLOGICAL SURVEY, WASHINGTON, D. C. 20242
A FOLDER DESCRIBING TOPOGRAPHIC MAPS AND SYMBOLS IS AVAILABLE ON REQUEST

Revisions shown in purple compiled in cooperation with
State of Ohio agencies from aerial photographs taken
1971. This information not field checked

USGS
HISTORICAL FILE
TOPOGRAPHIC DIVISION

SEP 19 1972

3930