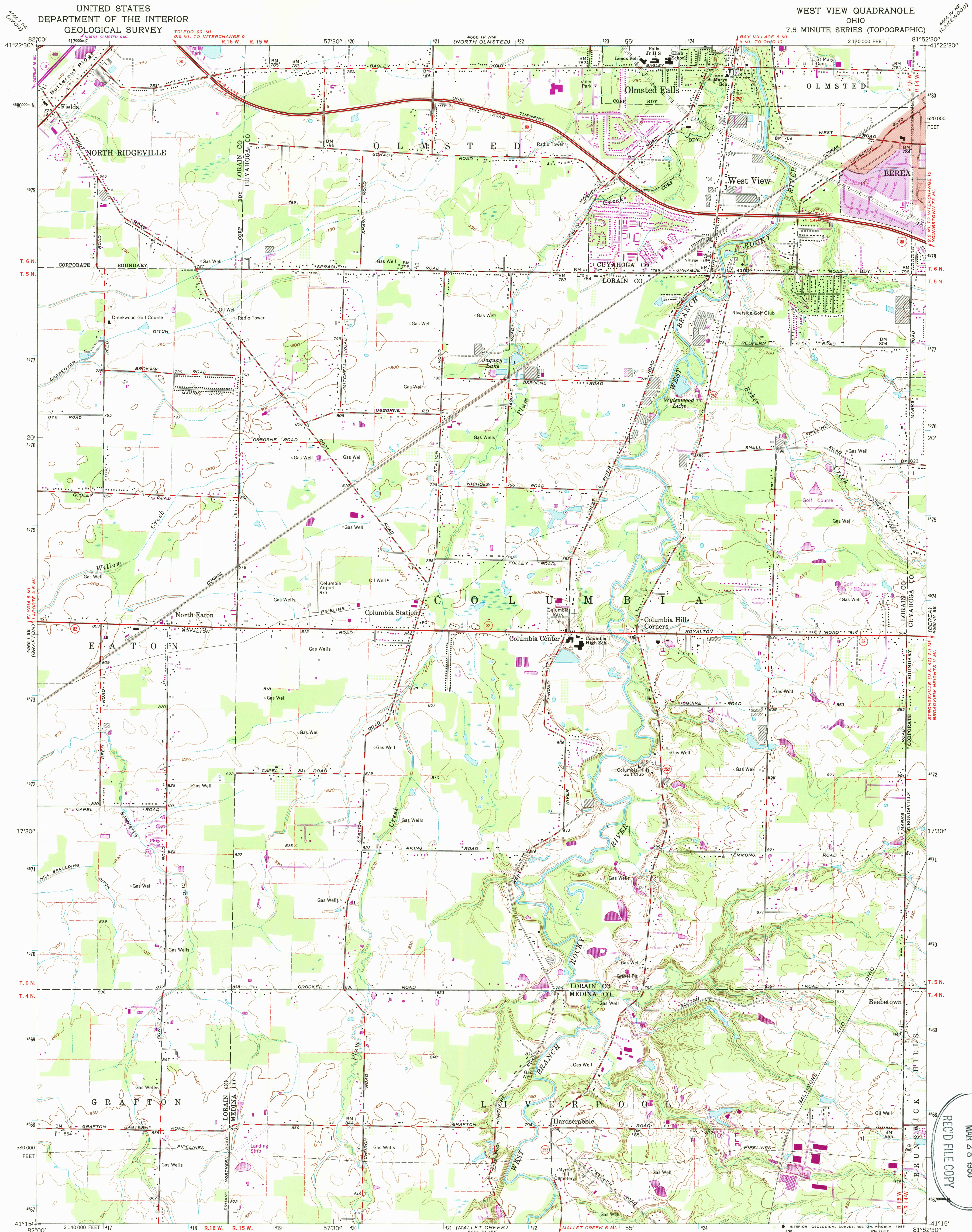
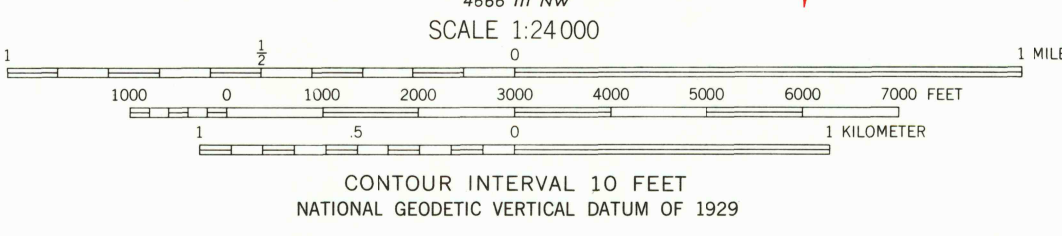
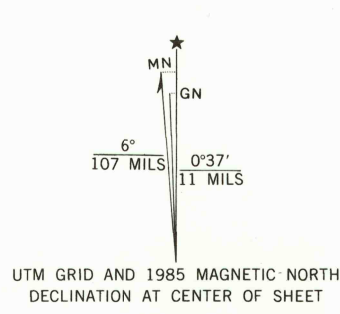


UNITED STATES
DEPARTMENT OF THE INTERIOR
GEOLOGICAL SURVEY

WEST VIEW QUADRANGLE
OHIO
7.5 MINUTE SERIES (TOPOGRAPHIC)



Mapped, edited, and published by the Geological Survey
Revised in cooperation with State of Ohio agencies
Control by USGS, NOS/NOAA, and Cleveland Regional Geodetic Survey
Planimetry by photogrammetric methods from aerial photographs
taken 1952. Topography by planimetric surveys 1953. Revised
from aerial photographs taken 1962. Field checked 1963.
Polyconic projection. 10,000-foot grid ticks based on Ohio
coordinate system, north zone
1000-meter Universal Transverse Mercator grid ticks,
zone 17, shown in blue
1927 North American Datum
To place on the predicted North American Datum 1983
move the projection lines 2 meters south and
12 meters west as shown by dashed corner ticks
Fine red dashed lines indicate selected fence and field lines where
generally visible on aerial photographs. This information is unchecked
Red tint indicates areas in which only landmark buildings are shown
Entire area lies within the Connecticut Western Reserve
Dotted land lines established by private subdivision of
the Connecticut Western Reserve



ROAD CLASSIFICATION	
Primary highway, all weather, hard surface	Light-duty road, all weather, improved surface
Secondary highway, all weather, hard surface	Unimproved road, fair or dry weather
Interstate Route	U. S. Route
	State Route

USGS AND HISTORICAL MAP
MAR 28 1986
REC'D FILE COPY

WEST VIEW, OHIO
41081-C8-TF-024
1963
PHOTOREVISED 1985
DMA 4666 IV SW-SERIES 1982

Revisions shown in purple and woodland compiled in
cooperation with State of Ohio agencies from aerial
photographs taken 1982 and other sources. This
information not field checked. Map edited 1985
Purple tint indicates extension of urban areas