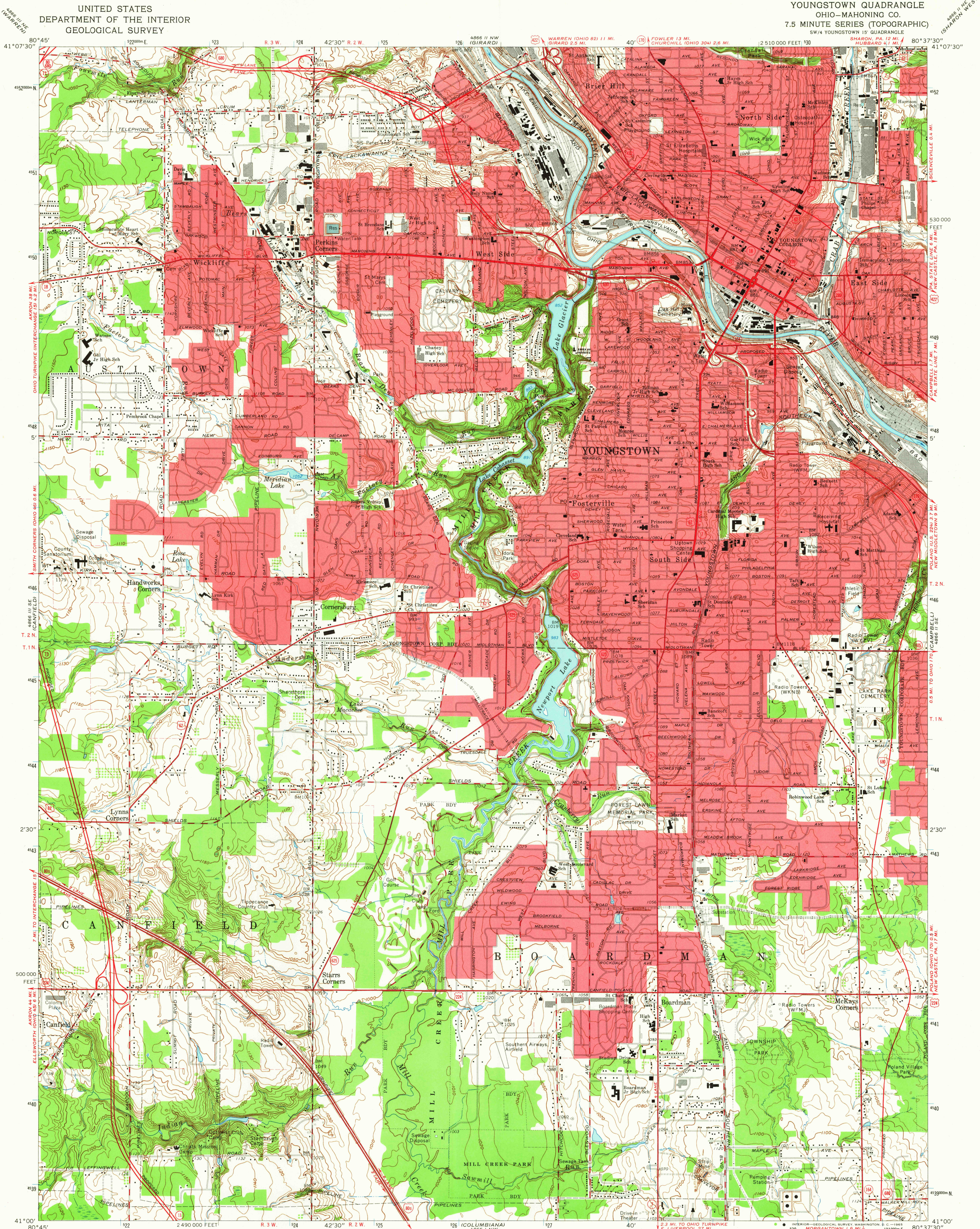
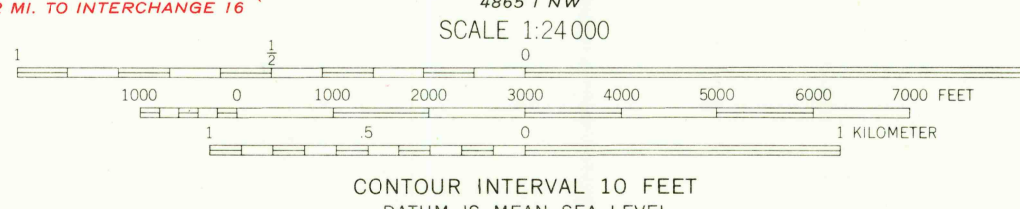
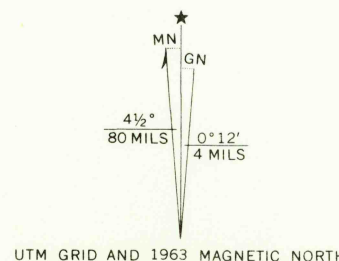


UNITED STATES  
DEPARTMENT OF THE INTERIOR  
GEOLOGICAL SURVEY

YOUNGSTOWN QUADRANGLE  
OHIO-MAHONING CO.  
7.5 MINUTE SERIES (TOPOGRAPHIC)  
SW/4 YOUNGSTOWN 15' QUADRANGLE



Mapped, edited, and published by the Geological Survey in cooperation with County of Mahoning  
Revised in cooperation with State of Ohio Agencies  
Control by USGS, USC&GS, and County of Mahoning  
Topography by photogrammetric methods from aerial photographs taken 1950 and planimetric surveys 1951. Revised from aerial photographs taken 1962. Field checked 1963  
Polyconic projection. 1927 North American datum  
10,000-foot grid based on Ohio coordinate system, north zone  
1000-meter Universal Transverse Mercator grid ticks, zone 17, shown in blue  
Fine red dashed lines indicate selected fence and field lines where generally visible on aerial photographs. This information is unchecked  
Red tint indicates area in which only landmark buildings are shown  
Entire area lies within the Connecticut Western Reserve  
Land lines established by private subdivision of the Connecticut Western Reserve



ROAD CLASSIFICATION	
Heavy-duty	Light-duty
Medium-duty	Unimproved dirt
Interstate Route	U.S. Route
	State Route



YOUNGSTOWN, OHIO  
SW/4 YOUNGSTOWN 15' QUADRANGLE  
N4100-W8037.5/7.5

1963  
AMS 4866 II SW-SERIES V852

U.S.G.S.  
FILE COPY  
TOPOGRAPHIC DIVISION  
DEC 8 1965

2145