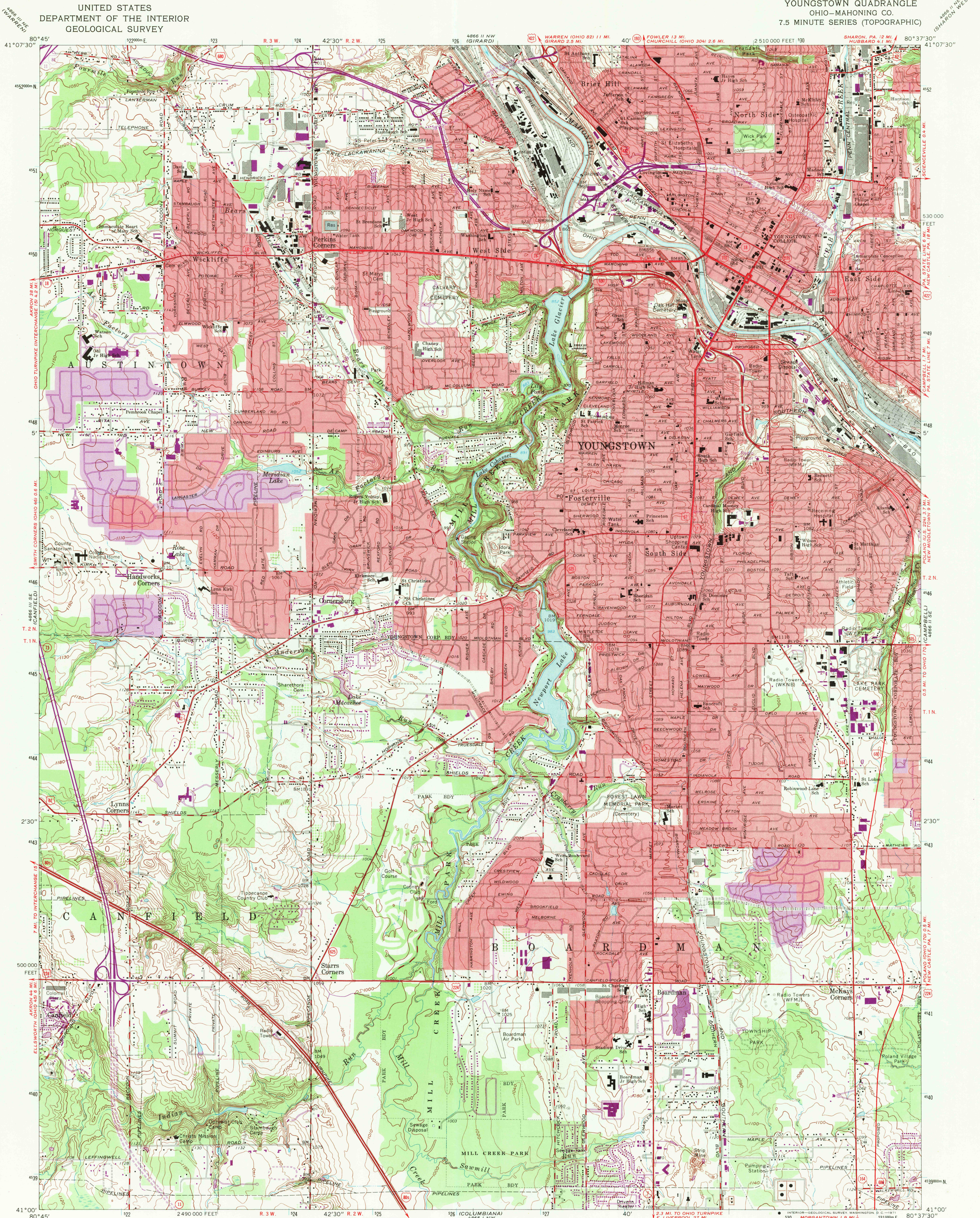
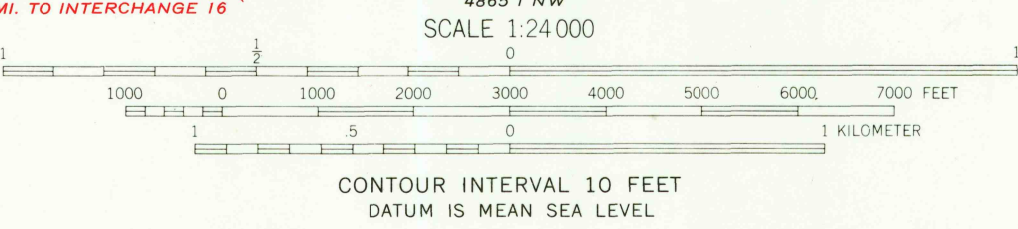
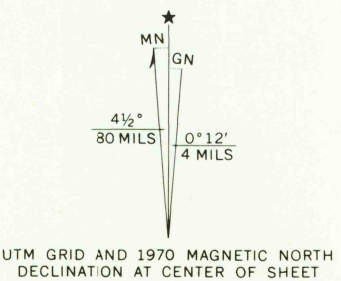


UNITED STATES  
DEPARTMENT OF THE INTERIOR  
GEOLOGICAL SURVEY

YOUNGSTOWN QUADRANGLE  
OHIO—MAHONING CO.  
7.5 MINUTE SERIES (TOPOGRAPHIC)



Mapped, edited, and published by the Geological Survey in cooperation with County of Mahoning. Revised in cooperation with State of Ohio Agencies Control by USGS, USC&GS, and County of Mahoning. Topography by photogrammetric methods from aerial photographs taken 1950 and planimetric surveys 1951. Revised from aerial photographs taken 1962. Field checked 1963. Polyconic projection. 1927 North American datum. 10,000-foot grid based on Ohio coordinate system, north zone 1000-meter Universal Transverse Mercator grid ticks, zone 17, shown in blue. Fine red dashed lines indicate selected fence and field lines where generally visible on aerial photographs. This information is unchecked. Red tint indicates area in which only landmark buildings are shown. Entire area lies within the Connecticut Western Reserve. Land lines established by private subdivision of the Connecticut Western Reserve.



THIS MAP COMPLIES WITH NATIONAL MAP ACCURACY STANDARDS FOR SALE BY U.S. GEOLOGICAL SURVEY, WASHINGTON, D.C. 20242. A FOLDER DESCRIBING TOPOGRAPHIC MAPS AND SYMBOLS IS AVAILABLE ON REQUEST.



ROAD CLASSIFICATION	
Heavy-duty	Light-duty
Medium-duty	Unimproved dirt
Interstate Route	U.S. Route
	State Route

YOUNGSTOWN, OHIO

N4100—W8037.5/7.5  
1963  
PHOTOREVISED 1970  
AMS 4866 II SW—SERIES Y852

U.S.G.S. FILE COPY TOPOGRAPHIC DIVISION

APR 13 1971