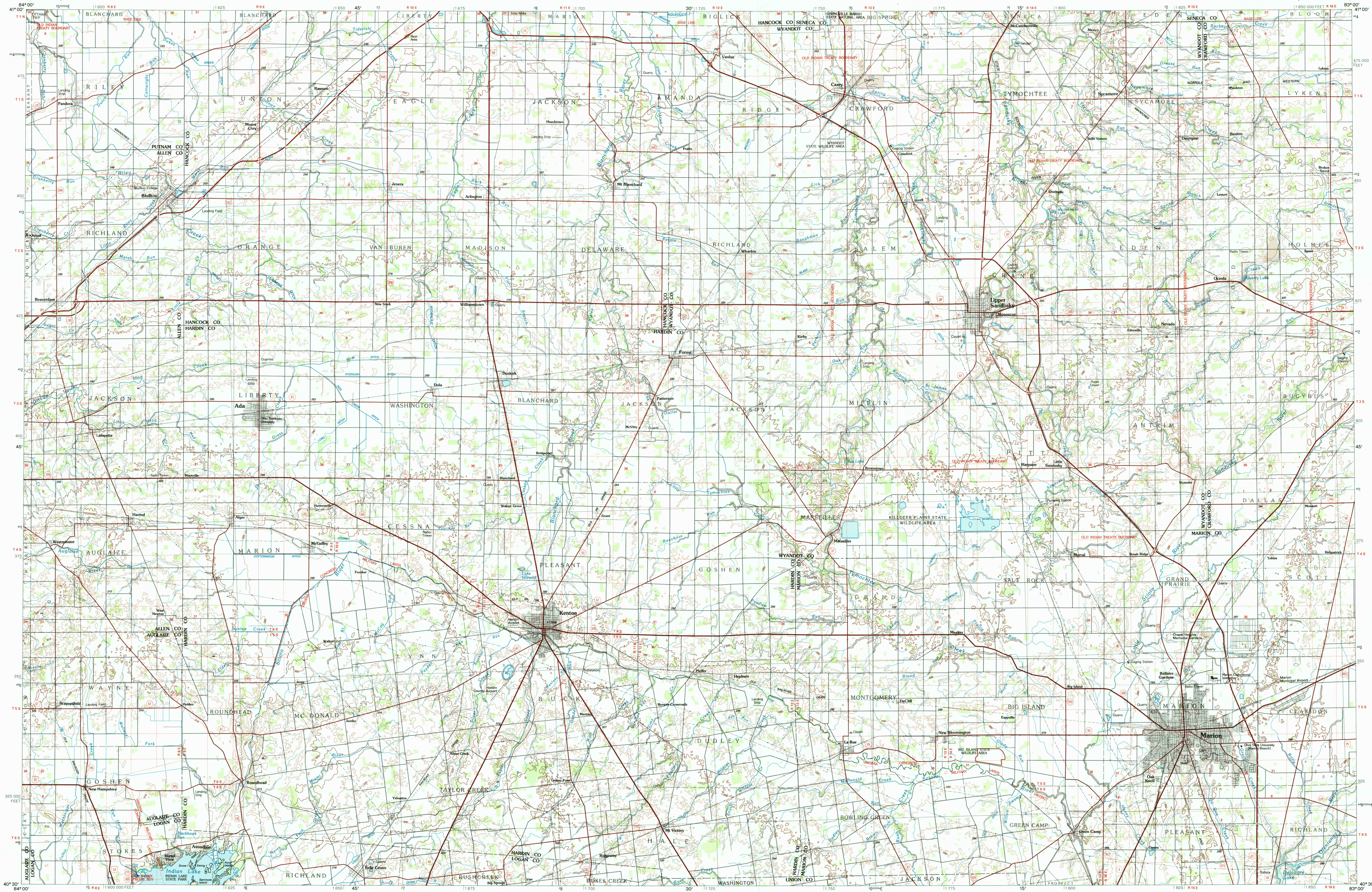
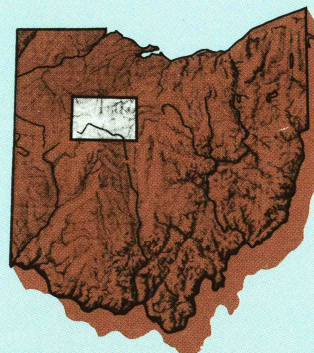
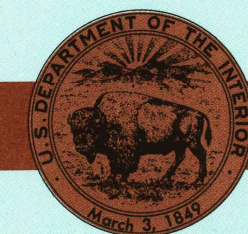


MARION, OHIO

30 X 60 MINUTE SERIES (TOPOGRAPHIC)

Marion
OHIO1:100 000-scale metric
topographic map30 X 60 MINUTE QUADRANGLE
SHOWING

- Contours and elevations in meters
- Highways, roads and other manmade structures
- Water features
- Woodland areas
- Geographic names



GEOLOGICAL SURVEY

1986
PHOTOINSPECTED 1989

Produced by the United States Geological Survey

Compiled from USGS 1:24 000-scale topographic maps dated 1960-1983. Planimetry revised from aerial photographs taken 1981 and other source data. Revised information not field checked. Map edited 1986.

Projection and 10 000-meter grid, zone 17, Universal Transverse Mercator

25 000-foot grid ticks based on Ohio coordinate system, north zone

1927 North American Datum

To place on the predicted North American Datum 1983, move the projection lines 2 meters south and 7 meters west.

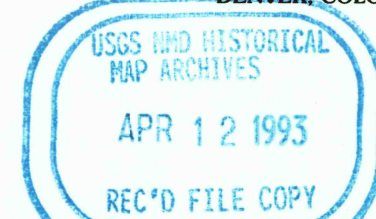
There may be private inholdings within the boundaries of the National or State reservations shown on this map

Map photoinspected using 1989 photographs
No major culture or drainage changes found

CONTOUR INTERVAL, 5 METERS
NATIONAL GEODETIC VERTICAL DATUM OF 1929
ELEVATIONS SHOWN TO THE NEAREST METER

THIS MAP COMPLIES WITH NATIONAL MAP ACCURACY STANDARDS

CONVERSION TABLE		DECLINATION DIAGRAM		ADJOINING MAPS		
Meters	Feet	MAGNETIC DECLINATION		1	2	3
1	3.2808			4	5	6
2	6.5617			7	8	9
3	9.8425			10	11	12
4	13.1234			13	14	15
5	16.4043			16	17	18
6	19.6852			19	20	21
7	22.9660			22	23	24
8	26.2469			25	26	27
9	29.5278			28	29	30
10	32.8084			31	32	33
To convert meters to feet multiply by 3.2808		UTM grid convergence (GN) and 1983 magnetic declination (MN) at center of map. Diagram is approximate		34	35	36
To convert feet to meters multiply by 0.3048				37	38	39

FOR SALE BY U.S. GEOLOGICAL SURVEY
DENVER, COLORADO 80225, OR RESTON, VIRGINIA 22092APR 12 1993
REC'D FILE COPY

Topographic Map Symbols

Primary highway, hard surface	
Secondary highway, hard surface	
Light duty road, principal street, hard or improved surface	
Other road or street; trail	
Route marker: Interstate; U.S. State	
Railroad: standard gage; narrow gage	
Bridge: overpass; underpass	
Tunnel: road; railroad	
Built up area; locality; elevation	
Airport; landing field; landing strip	
National boundary	
State boundary	
County boundary	
National or State reservation boundary	
Land grant boundary	
U.S. public lands survey: range, township; section	
Range, township; section line: protracted	
Power transmission line; pipeline	
Dam; dam with lock	
Cemetery; building	
Windmill; water well; spring	
Mine shaft; adit or cave; mine, quarry; gravel pit	
Campground; picnic area; U.S. location monument	
Radio; cell dwelling	
Distorted surface: strip mine, lava, sand	
Contours: index; intermediate; supplementary	
Bathymetric contours: index; intermediate	
Stream, lake; perennial; intermittent	
Rapids; large and small; lake, large and small	
Area to be submerged; marsh; swamp	
Land subject to controlled inundation; woodland	
Scrub; mangrove	
Orchard; vineyard	

A pamphlet describing topographic maps is available on request

MARION, OHIO

40083-E1-TM-100

1986
PHOTOINSPECTED 1989