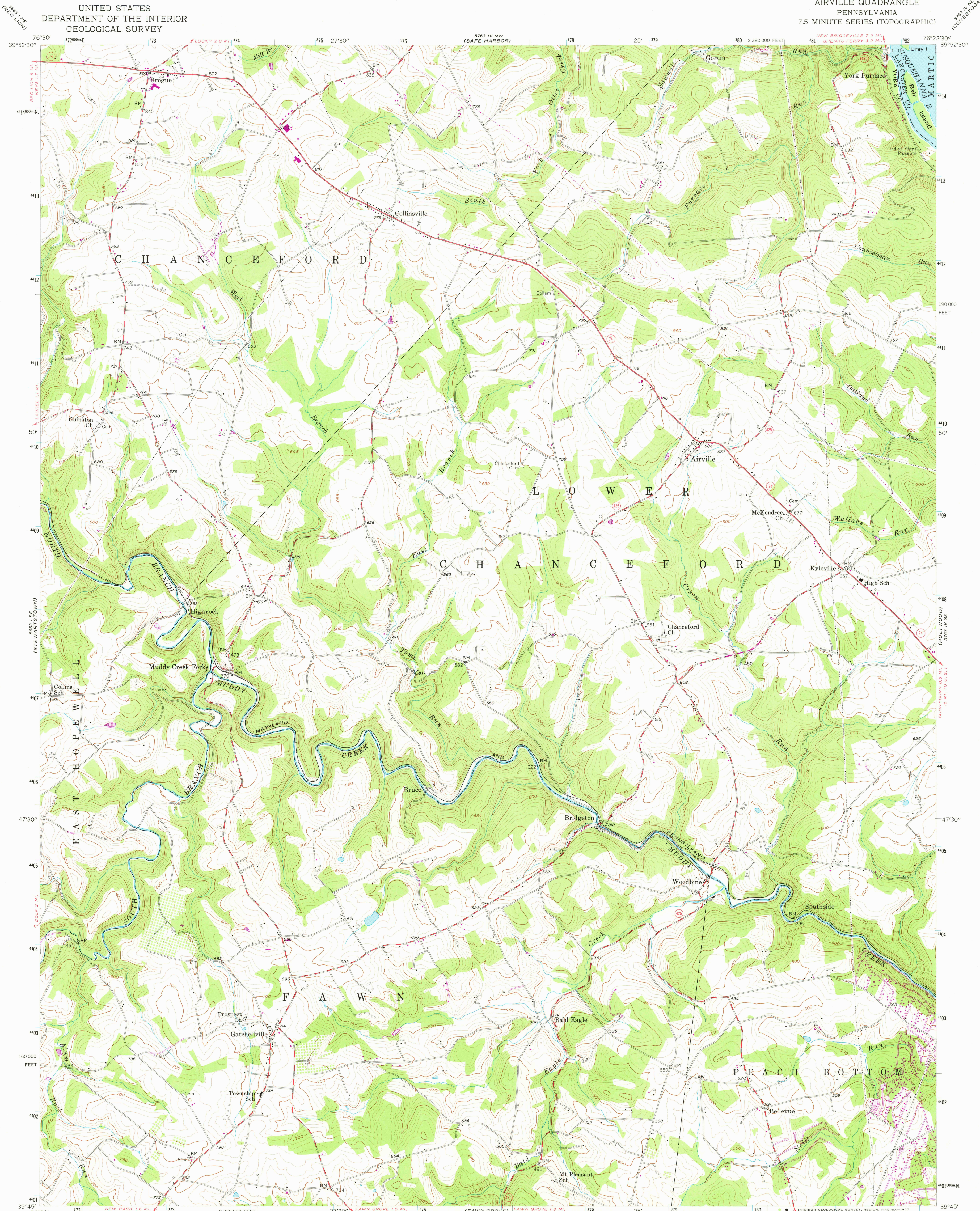


UNITED STATES  
DEPARTMENT OF THE INTERIOR  
GEOLOGICAL SURVEY

AIRVILLE QUADRANGLE  
PENNSYLVANIA  
7.5 MINUTE SERIES (TOPOGRAPHIC)



Mapped, edited, and published by the Geological Survey

Control by USGS, USC&GS, and USCE

Topography from aerial photographs by Kelsh plotter

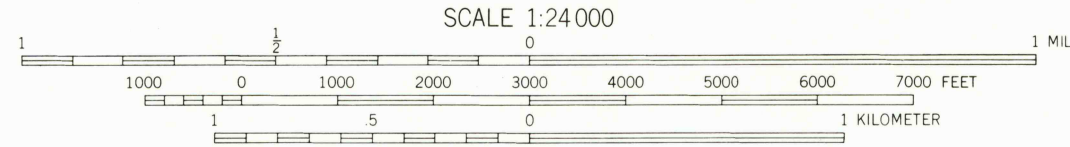
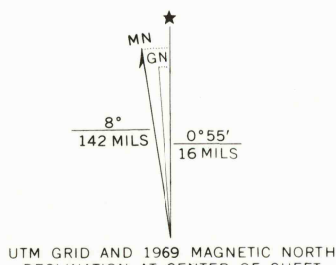
Aerial photographs taken 1952. Field check 1955

Polycyclic projection. 1927 North American datum  
10,000-foot grid based on Pennsylvania coordinate system,  
south zone

Unchecked elevations are shown in brown

1000-meter Universal Transverse Mercator grid ticks,  
zone 18, shown in blue

Revisions shown in purple compiled in cooperation with State of  
Pennsylvania agencies from aerial photographs taken 1969. This  
information not field checked



THIS MAP COMPLIES WITH NATIONAL MAP ACCURACY STANDARDS  
FOR SALE BY U. S. GEOLOGICAL SURVEY, RESTON, VIRGINIA 22092  
A FOLDER DESCRIBING TOPOGRAPHIC MAPS AND SYMBOLS IS AVAILABLE ON REQUEST



ROAD CLASSIFICATION  
Heavy-duty ——— Light-duty ———  
Medium-duty ——— Unimproved dirt ———  
U. S. Route ——— State Route ———

USGS AIRVILLE, PA.  
Historical File  
Topographic Division 3945—W 7622.5/7.5

1955  
PHOTOREVISED 1969  
AMS 5763 IV SW-SERIES V831

MAY 23 1977  
3800