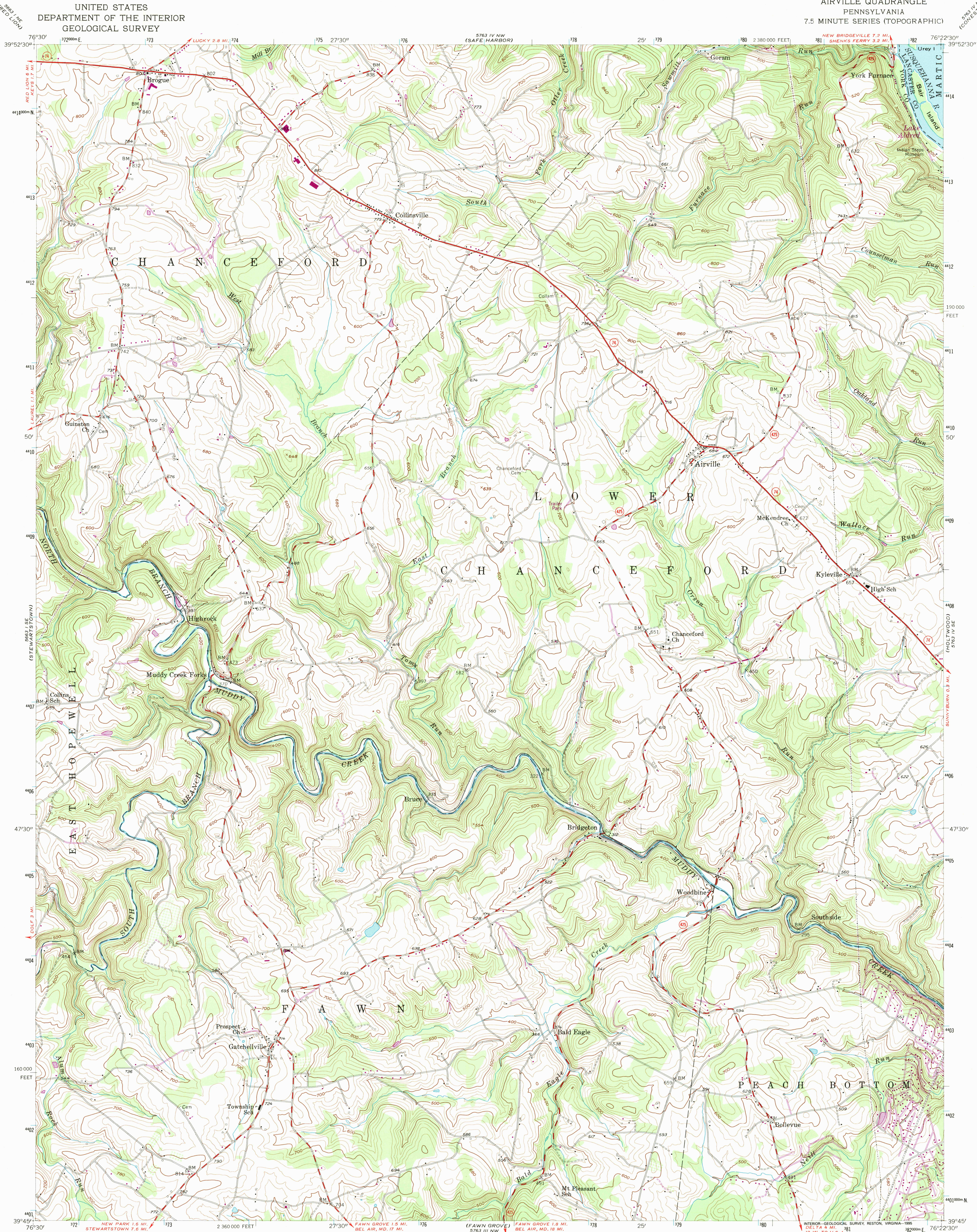
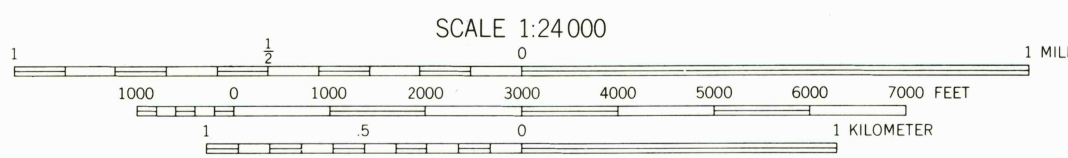
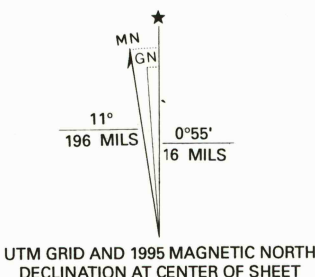


UNITED STATES
DEPARTMENT OF THE INTERIOR
GEOLOGICAL SURVEY

AIRVILLE QUADRANGLE
PENNSYLVANIA
7.5 MINUTE SERIES (TOPOGRAPHIC)



Produced by the U. S. Geological Survey
Compiled by photogrammetric methods from imagery dated 1952
Field checked 1955
Photinspected using imagery dated 1992; no major culture or
drainage changes observed. Names revised and boundaries verified 1995
North American Datum of 1927 (NAD 27). Projection and
10 000-foot ticks: Pennsylvania coordinate system, south zone
(Lambert conformal conic)
Blue 1000-meter Universal Transverse Mercator grid ticks, zone 18
North American Datum of 1983 (NAD 83) is shown by dashed
corner ticks. The values of the shift between NAD 27 and NAD 83
for 7.5-minute intersections are obtainable from National Geodetic
Survey NADCON software
Revisions shown in purple compiled in cooperation with State of
Pennsylvania agencies from aerial photographs taken 1969 and 1976
This information not field checked



THIS MAP COMPLIES WITH NATIONAL MAP ACCURACY STANDARDS
FOR SALE BY U.S. GEOLOGICAL SURVEY
DENVER, COLORADO 80225, OR RESTON, VIRGINIA 22092
A FOLDER DESCRIBING TOPOGRAPHIC MAPS AND SYMBOLS IS AVAILABLE ON REQUEST



ROAD CLASSIFICATION
Primary highway, hard surface
Secondary highway, hard surface
Light-duty road, hard or improved surface
Unimproved road
Interstate Route
U.S. Route
State Route

AIRVILLE, PA
39076-G4-TF-024
1992

DMA 5763 IV SW-SERIES V831

USGS AND HISTORIC MAP ARCHIVES

