

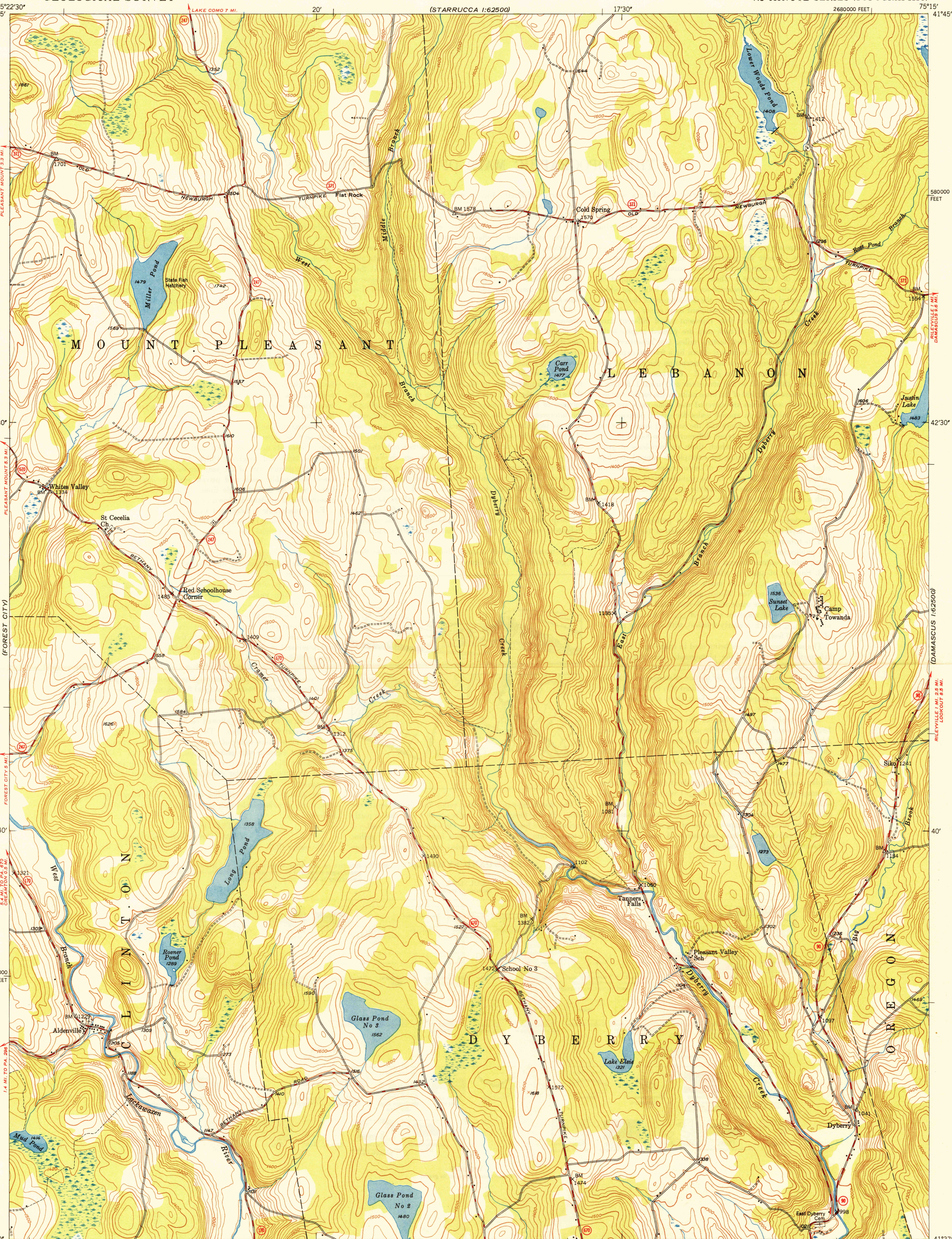
UNITED STATES
DEPARTMENT OF THE INTERIOR
GEOLOGICAL SURVEY

ALDENVILLE QUADRANGLE
PENNSYLVANIA-WAYNE CO.
7.5 MINUTE SERIES (TOPOGRAPHIC)

(LONG EDDY)
1:62500

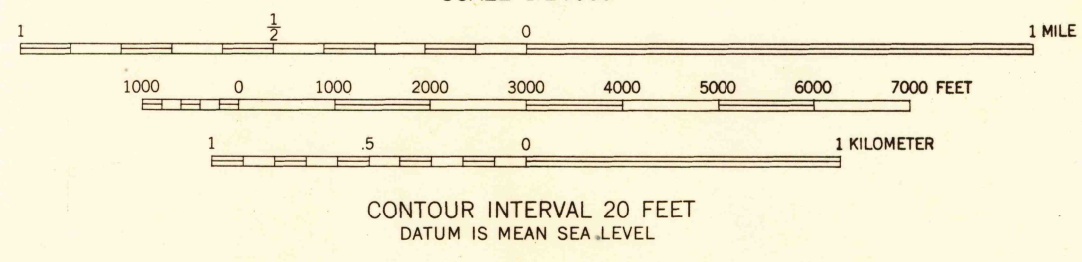
U.S.G.S.
FILE COPY
Inspection and Editing

U.S.G.S.
FILE COPY
Inspection and Editing



Mapped, edited, and published by the Geological Survey
Control by USGS
Topography from aerial photographs by multiplex methods
Aerial photographs taken 1942. Field check 1946
Polyconic projection. 1927 North American datum
10,000-foot grid based on Pennsylvania coordinate system,
north zone

11°
TRUE NORTH
MAGNETIC NORTH
APPROXIMATE MEAN
DECLINATION, 1946



THIS MAP COMPLIES WITH NATIONAL MAP ACCURACY STANDARDS
FOR SALE BY U. S. GEOLOGICAL SURVEY, WASHINGTON 25, D. C.

ROAD CLASSIFICATION
HARD-SURFACE ALL WEATHER ROADS DRY WEATHER ROADS
Heavy-duty. —+ LANE'S LANE Improved dirt. —+ LANE'S LANE
Medium-duty. —+ LANE'S LANE Unimproved dirt. —+ LANE'S LANE
Loose-surface, graded, or narrow hard-surface. —+ LANE'S LANE
U. S. Route State Route

ALDENVILLE, PA.
N4137.5-W7515/7.5
EDITION OF 1949

U.S.G.S.
FILE COPY
Inspection and Editing

JUL 1 1949 3145