

UNITED STATES
DEPARTMENT OF THE INTERIOR
GEOLOGICAL SURVEY

ALFARATA QUADRANGLE
PENNSYLVANIA
7.5 MINUTE SERIES (TOPOGRAPHIC)

NW/4 MIPLINTOWN 15' QUADRANGLE

2 100 000 FEET

(MILLHEIM 1:62 500)

40°45'

510 000
FEET

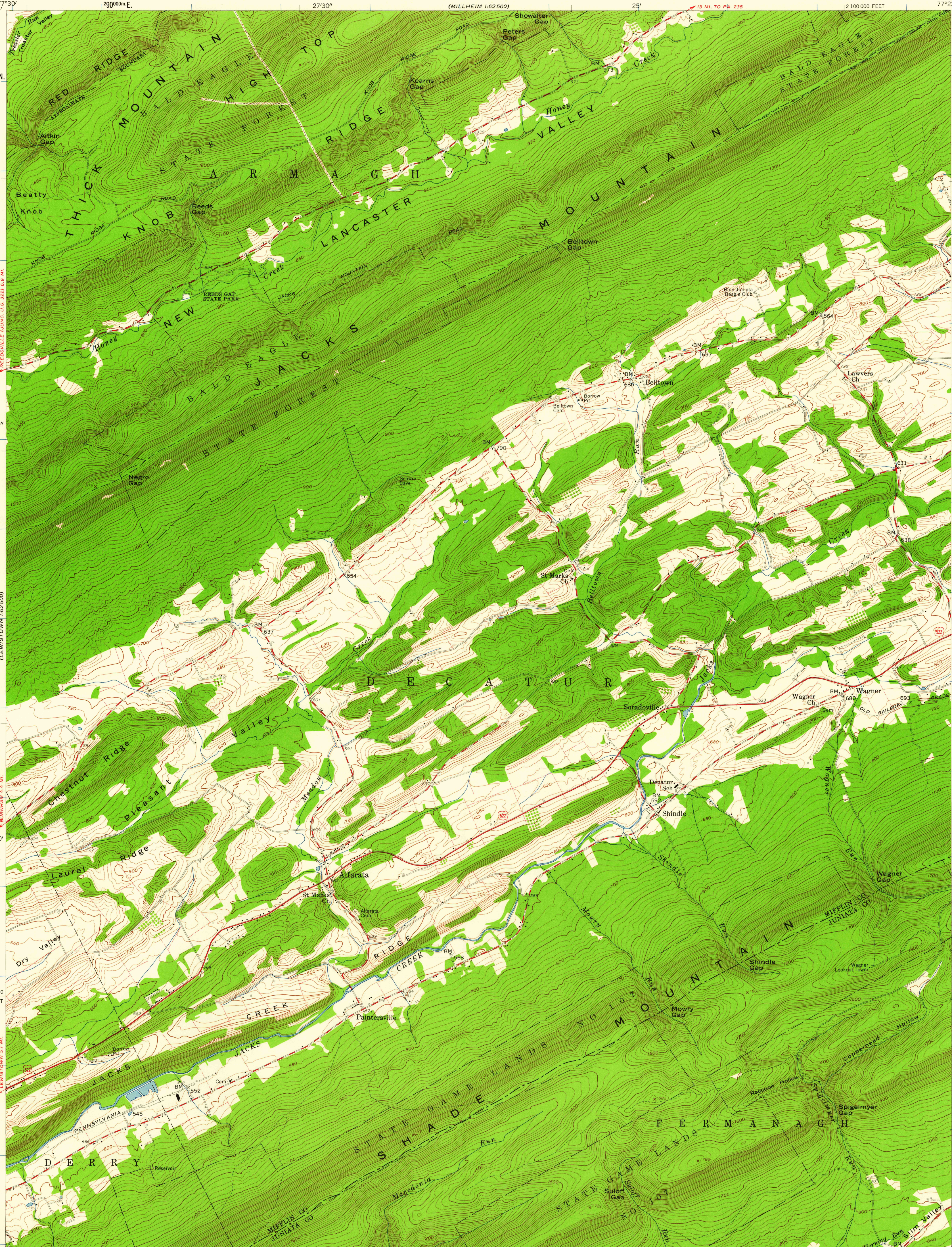
42°30'

40°

40°37'30"

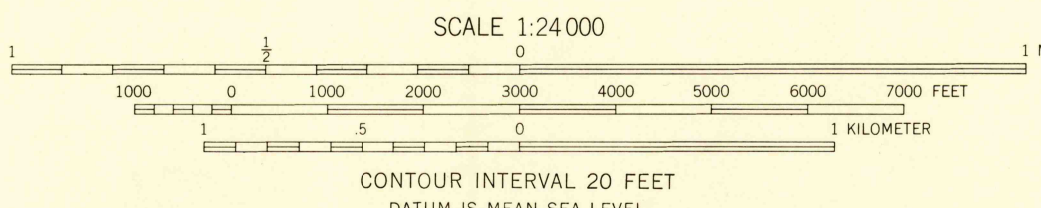
77°22'30"

(MEXICO)



Mapped, edited, and published by the Geological Survey
Control by USGS and USCGS
Topography from aerial photographs by photogrammetric methods
Aerial photographs taken 1958. Field check 1959
Polyconic projection. 1927 North American datum
10,000-foot grid based on Pennsylvania coordinate system,
south zone
1000-meter Universal Transverse Mercator grid ticks,
zone 18, shown in blue
Fine red dashed lines indicate selected fence and field lines
visible on aerial photographs. This information is unchecked
Unchecked elevations are shown in brown

TRUE NORTH
MAGNETIC NORTH
APPROXIMATE MEAN
DECLINATION, 1959



USGS
Historical File
Topographic Division
PENNSYLVANIA
QUADRANGLE LOCATION

ROAD CLASSIFICATION
Heavy-duty ——— Light-duty ———
Medium-duty ——— Unimproved dirt ———
U. S. Route

USGS
FILE COPY
TOPOGRAPHIC DIVISION

ALFARATA, PA.
NW/4 MIPLINTOWN 15' QUADRANGLE
N4037.5-W7722.5/7.5

1959

THIS MAP COMPLIES WITH NATIONAL MAP ACCURACY STANDARDS
FOR SALE BY U. S. GEOLOGICAL SURVEY, WASHINGTON 25, D. C.
A FOLDER DESCRIBING TOPOGRAPHIC MAPS AND SYMBOLS IS AVAILABLE ON REQUEST

JUN 20 1960

3030