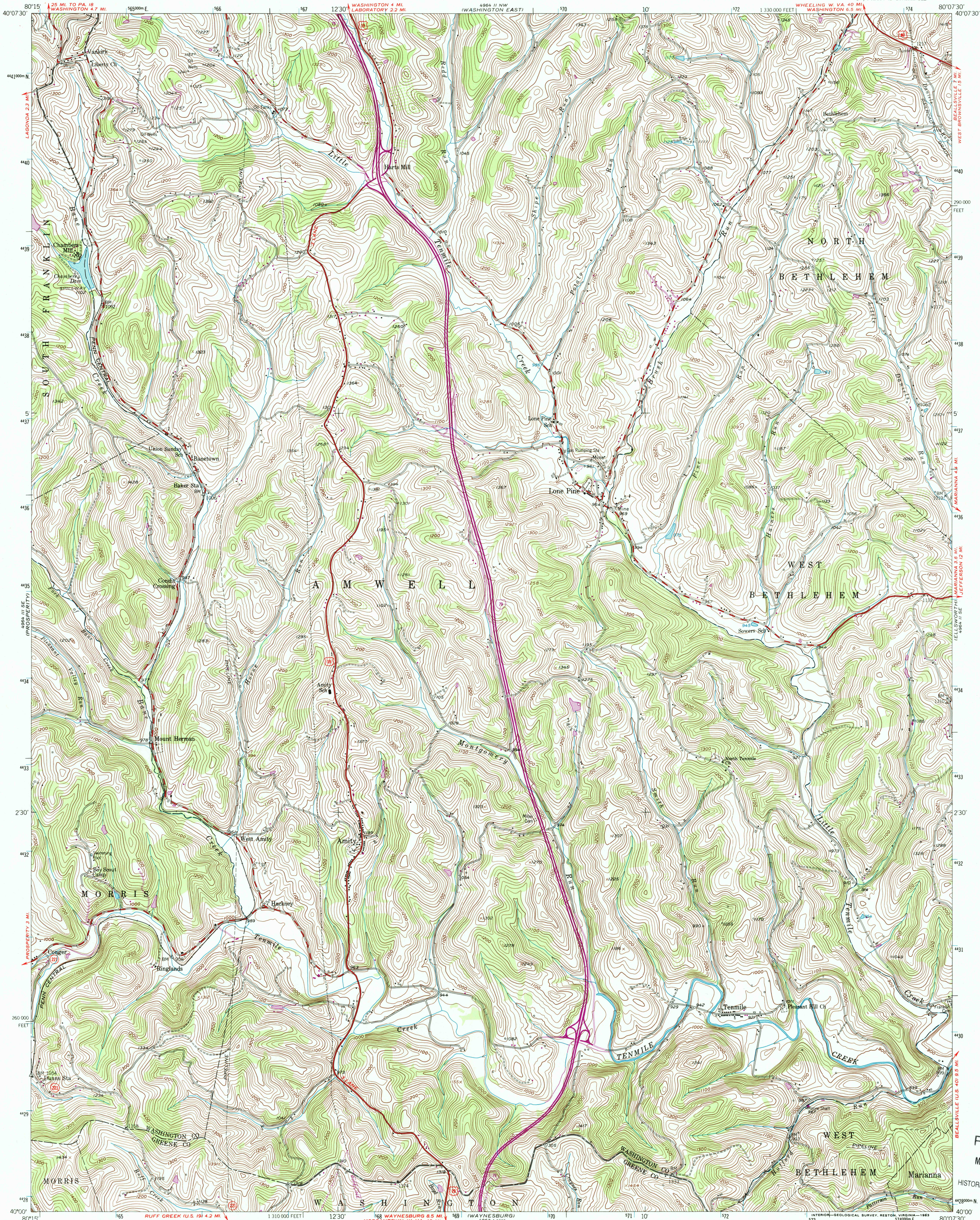




U.S. DEPARTMENT OF THE INTERIOR  
U.S. GEOLOGICAL SURVEY

AMITY QUADRANGLE  
PENNSYLVANIA  
7.5 MINUTE SERIES (TOPOGRAPHIC)  
SW 1/4 AMITY 15 QUADRANGLE

4964 II NW  
(HCON 11)



Mapped, edited, and published by the Geological Survey

Control by USGS and USC&GS

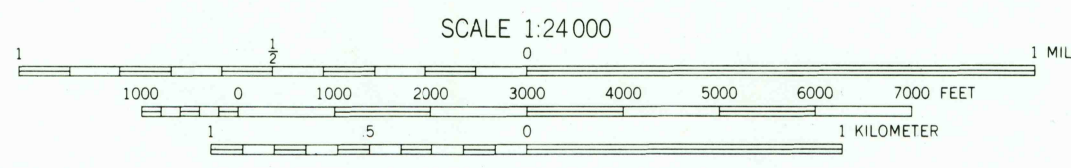
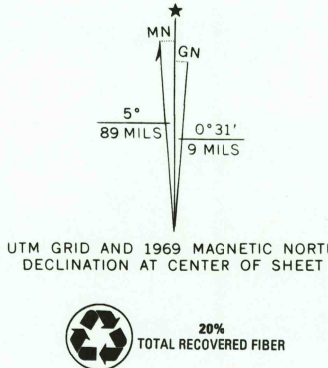
Topography from aerial photographs by multiplex methods  
Aerial photographs taken 1952. Field check 1954

Polyconic projection. 1927 North American datum  
10,000-foot grid based on Pennsylvania coordinate system,  
south zone

1000-meter Universal Transverse Mercator grid ticks, zone 17,  
shown in blue

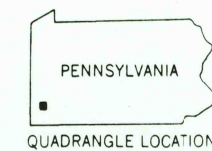
All wells are gas wells unless otherwise indicated

Revisions shown in purple compiled in cooperation with  
State of Pennsylvania agencies, from aerial photographs taken 1969  
This information not field checked



CONTOUR INTERVAL 20 FEET  
DATUM IS MEAN SEA LEVEL

THIS MAP COMPLIES WITH NATIONAL MAP ACCURACY STANDARDS  
FOR SALE BY U.S. GEOLOGICAL SURVEY, RESTON, VIRGINIA 22092  
A FOLDER DESCRIBING TOPOGRAPHIC MAPS AND SYMBOLS IS AVAILABLE ON REQUEST



Map photinspected 1977  
No major culture or drainage changes observed

ROAD CLASSIFICATION  
Heavy-duty ——— Light-duty ———  
Medium-duty ——— Unimproved dirt ———  
Interstate Route U.S. Route State Route



AMITY, PA.  
SW 1/4 AMITY 15 QUADRANGLE  
N4000—W8007.5/7.5  
PHOTOINSPECTED 1977  
1954  
PHOTOINSPECTED 1969  
AMS 4964 II SW—SERIES V831

USGS Library  
Reston, VA.  
Topo Archive

RECEIVED  
MAY 19 2003

U.S. GEOLOGICAL SURVEY  
HISTORICAL MAP ARCHIVES

