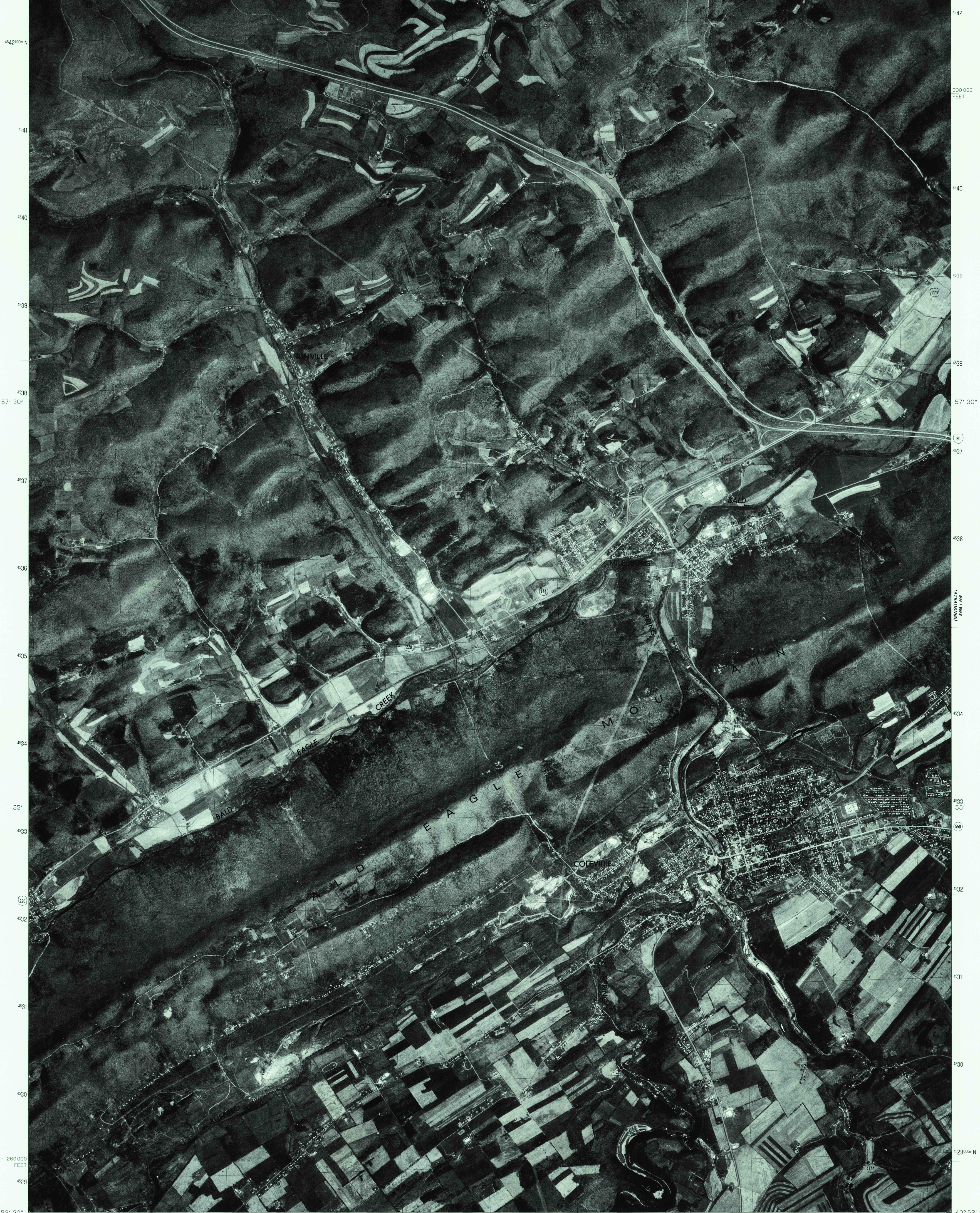
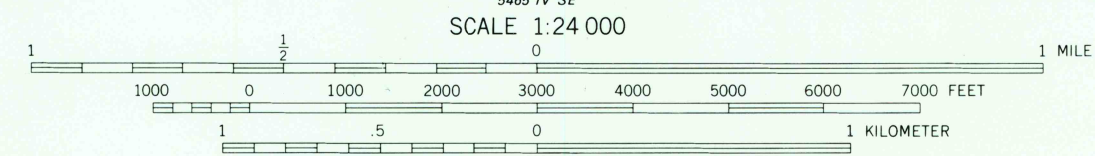
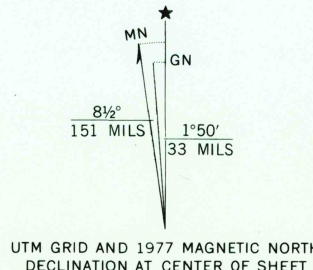


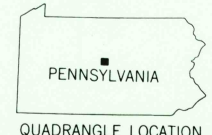
77° 52' 30" 41° 00' 459000 E 760 761 50' 762 763 764 765 47' 30" 1990000 FEET 766 767 768 77° 45' 41° 00'



Produced and published by the Geological Survey  
in cooperation with the Soil Conservation Service  
Orthophotograph prepared from 1:80,000-scale  
aerial photograph taken May 1, 1977  
Projection and 10,000-foot grid ticks: Pennsylvania  
coordinate system, north zone (Lambert conformal conic)  
1000-meter Universal Transverse Mercator grid,  
zone 18. 1927 North American datum  
Photoimagery rectified by automatic correlation



PRINCIPAL NUMBERED HIGHWAYS  
Interstate Route U.S. Route State Route



USGS  
Historical File  
Topographic Division

This quadrangle area also covered by  
1:24,000-scale topographic map  
BELLEFONTE, PA.  
N4052.5-W7745/7.5

SEP 10 1980

THIS MAP COMPLIES WITH NATIONAL MAP ACCURACY STANDARDS  
FOR SALE BY U.S. GEOLOGICAL SURVEY, RESTON, VIRGINIA 22092

AMS 5465 IV NE-SERIES V031