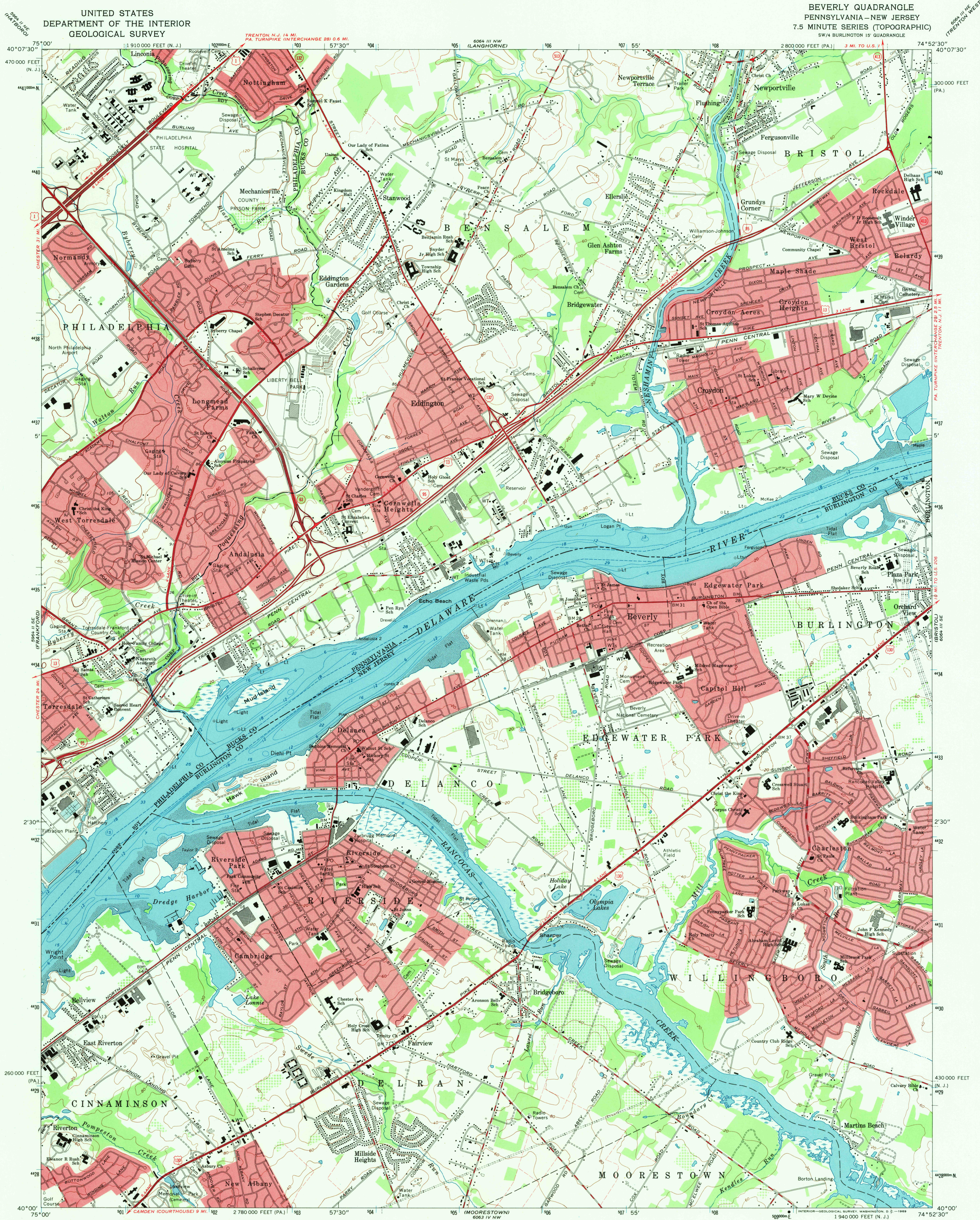
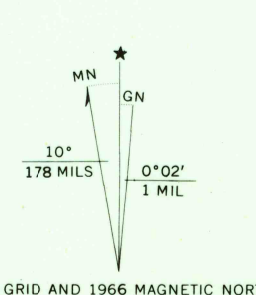


UNITED STATES
DEPARTMENT OF THE INTERIOR
GEOLOGICAL SURVEY

BEVERLY QUADRANGLE
PENNSYLVANIA-NEW JERSEY
7.5 MINUTE SERIES (TOPOGRAPHIC)
SW 1/4 BURLINGTON 15' QUADRANGLE



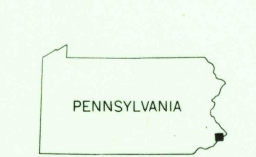
Maped by the Army Map Service
Control by USGS, USCGS, USCE, and New Jersey Geodetic Survey
Topography by photogrammetric methods from aerial photographs
taken 1942. Field checked 1943. Revised by the Geological Survey
from aerial photographs taken 1965. Field checked 1966
Selected hydrographic data compiled from USCGS Chart 296 (1966)
This information is not intended for navigational purposes
Polyconic projection. 1927 North American datum
10,000-foot grids based on Pennsylvania coordinate system,
south zone, and New Jersey coordinate system
1000-meter Universal Transverse Mercator grid ticks,
zone 18, shown in blue
Fine dashed lines indicate selected fence and field lines where
generally visible on aerial photographs. This information is unchecked
Red tint indicates areas in which only landmark buildings are shown



SCALE 1:24,000
CONTOUR INTERVAL 20 FEET
DATUM IS MEAN SEA LEVEL
DEPTH CURVES AND SOUNDINGS IN FEET—DATUM IS MEAN LOW WATER
SHORELINE SHOWN REPRESENTS THE APPROXIMATE LINE OF MEAN HIGH WATER
THE MEAN RANGE OF TIDE IS APPROXIMATELY 6.5 FEET

USGS
Historical File
Topographic Division

ROAD CLASSIFICATION
Heavy-duty ——— Light-duty ———
Medium-duty ——— Unimproved dirt ———
Interstate Route U.S. Route State Route



U.S.G.S.
FILE COPY
TOPOGRAPHIC DIVISION

BEVERLY, PA.-N.J.
SW 1/4 BURLINGTON 15' QUADRANGLE
N4000-W7452.5/7.5
1966
AMS 6064 III SW-SERIES V831

MAR 10 1970