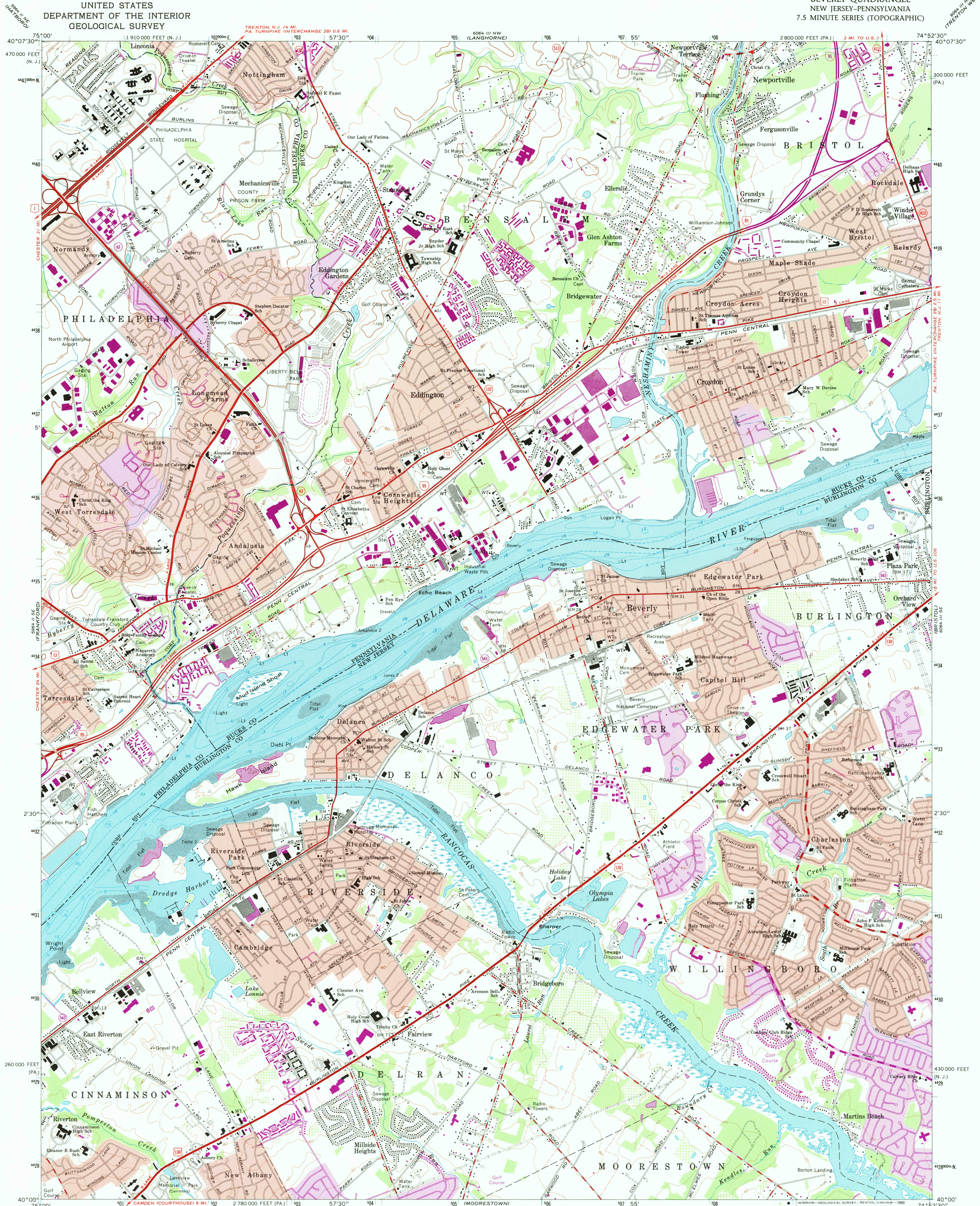


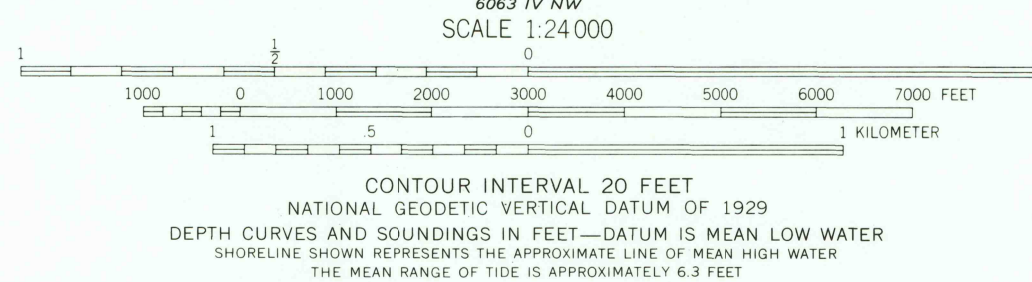
UNITED STATES
DEPARTMENT OF THE INTERIOR
GEOLOGICAL SURVEY

BEVERLY QUADRANGLE
NEW JERSEY-PENNSYLVANIA
7.5 MINUTE SERIES (TOPOGRAPHIC)



Mapped by the Army Map Service
Edited and published by the Geological Survey
Control by USGS, USC&GS, USCE, and New Jersey Geodetic Survey
Topography by photogrammetric methods from aerial photographs
taken 1942. Field checked 1943. Revised by the Geological Survey
from aerial photographs taken 1965. Field checked 1966.
Selected hydrographic data compiled from USC&GS Chart 296 (1966).
This information is not intended for navigational purposes.
Polyconic projection. 1927 North American datum
10,000-foot grids based on Pennsylvania coordinate system,
south zone, and New Jersey coordinate system.
1000-meter Universal Transverse Mercator grid ticks,
zone 18, shown in blue.
Fine red dashed lines indicate selected fence and field lines where
generally visible on aerial photographs. This information is unchecked.
Red tint indicates areas in which only landmark buildings are shown.

UTM GRID AND 1973 MAGNETIC NORTH
DECLINATION AT CENTER OF SHEET
To place on the predicted North American Datum 1983
move the projection lines 6 meters south and
32 meters west as shown by dashed corner ticks



THIS MAP COMPLIES WITH NATIONAL MAP ACCURACY STANDARDS
FOR SALE BY U.S. GEOLOGICAL SURVEY
DENVER, COLORADO 80225, OR RESTON, VIRGINIA 22092
A FOLDER DESCRIBING TOPOGRAPHIC MAPS AND SYMBOLS IS AVAILABLE ON REQUEST

RETURN TO:
USGS NHD HISTORICAL MAP ARCHIVES
PENNsylvania
QUADRANGLE LOCATION

ROAD CLASSIFICATION
Heavy-duty ——— Light-duty ———
Medium-duty ——— Unimproved dirt ———
Interstate Route U.S. Route State Route

BEVERLY, N.J.-PA.

40074-AB-T-024

1966
PHOTOREVISED 1973
DMA 6064 III SW-SERIES V831

Revisions shown in purple compiled from aerial photographs
taken 1973. This information not field checked.
Purple tint indicates extension of urban areas.