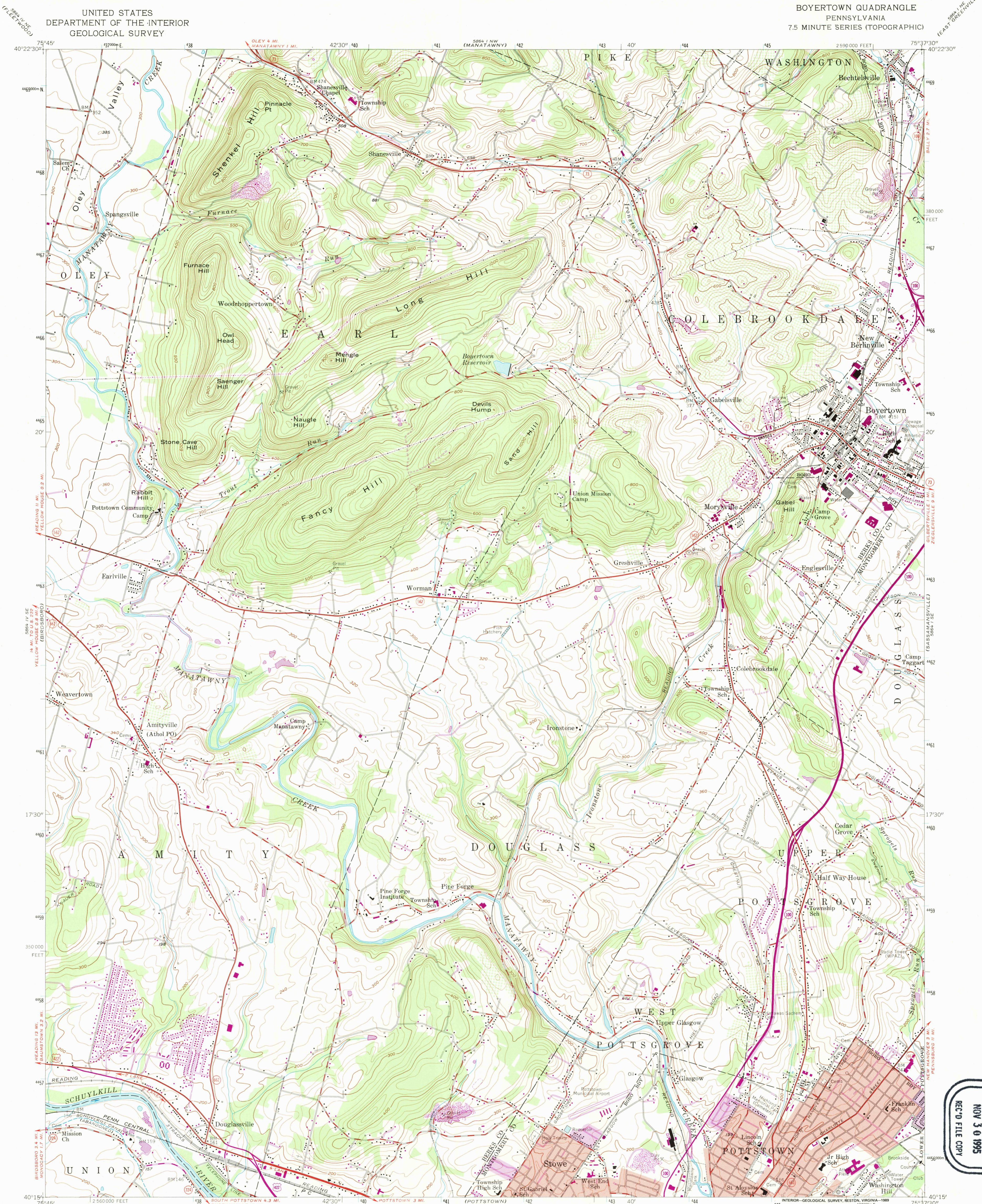


UNITED STATES  
DEPARTMENT OF THE INTERIOR  
GEOLOGICAL SURVEY

BOYERTOWN QUADRANGLE  
PENNSYLVANIA  
7.5 MINUTE SERIES (TOPOGRAPHIC)

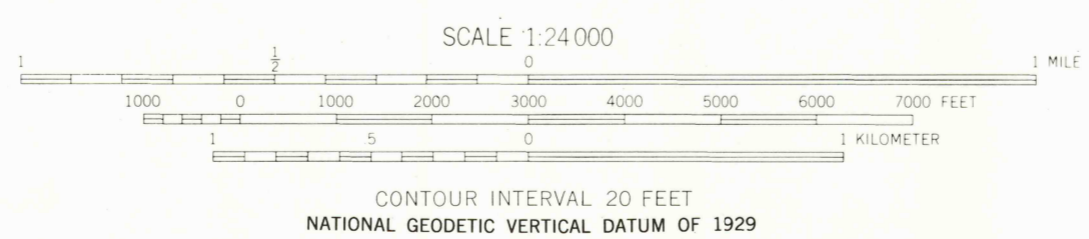


USGS AND HISTORICAL  
MAP ARCHIVES  
NOV 3 0 1995  
REC'D FILE COPY

Map by the Army Map Service  
Edited and published by the Geological Survey  
Control by USGS, USC&GS, and USCE

Topography from aerial photographs by photogrammetric  
methods. Field check 1943  
Culture revised by the Geological Survey 1957  
Polyconic projection. 1927 North American datum  
10,000-foot grid based on Pennsylvania coordinate system,  
south zone  
1000-meter Universal Transverse Mercator grid ticks,  
zone 18, shown in blue  
Red tint indicates areas in which only  
landmark buildings are shown  
Map photoinspected 1980  
No major culture or drainage changes observed

Revisions shown in purple compiled in cooperation with  
State of Pennsylvania agencies, from aerial photographs  
taken 1968 and 1973. This information not field checked  
Purple tint indicates extension of urban areas



ROAD CLASSIFICATION  
Heavy-duty ——— Light-duty ———  
Medium-duty ——— Unimproved dirt ———  
U. S. Route ——— State Route ———

THIS MAP COMPLIES WITH NATIONAL MAP ACCURACY STANDARDS  
FOR SALE BY U. S. GEOLOGICAL SURVEY, DENVER, COLORADO 80225  
OR RESTON, VIRGINIA 22092  
A FOLDER DESCRIBING TOPOGRAPHIC MAPS AND SYMBOLS IS AVAILABLE ON REQUEST

To place on the predicted North American Datum 1983  
move the projection lines 6 meters south and  
30 meters west as shown by dashed corner ticks

BOYERTOWN, PA.  
40075-C6-TF-024  
PHOTOINSPECTED 1980  
1957  
PHOTOREVISED 1968 AND 1973  
DMA 5864 1 SW-SERIES V831

0-670971-09082-6  
D-670971-09082-6