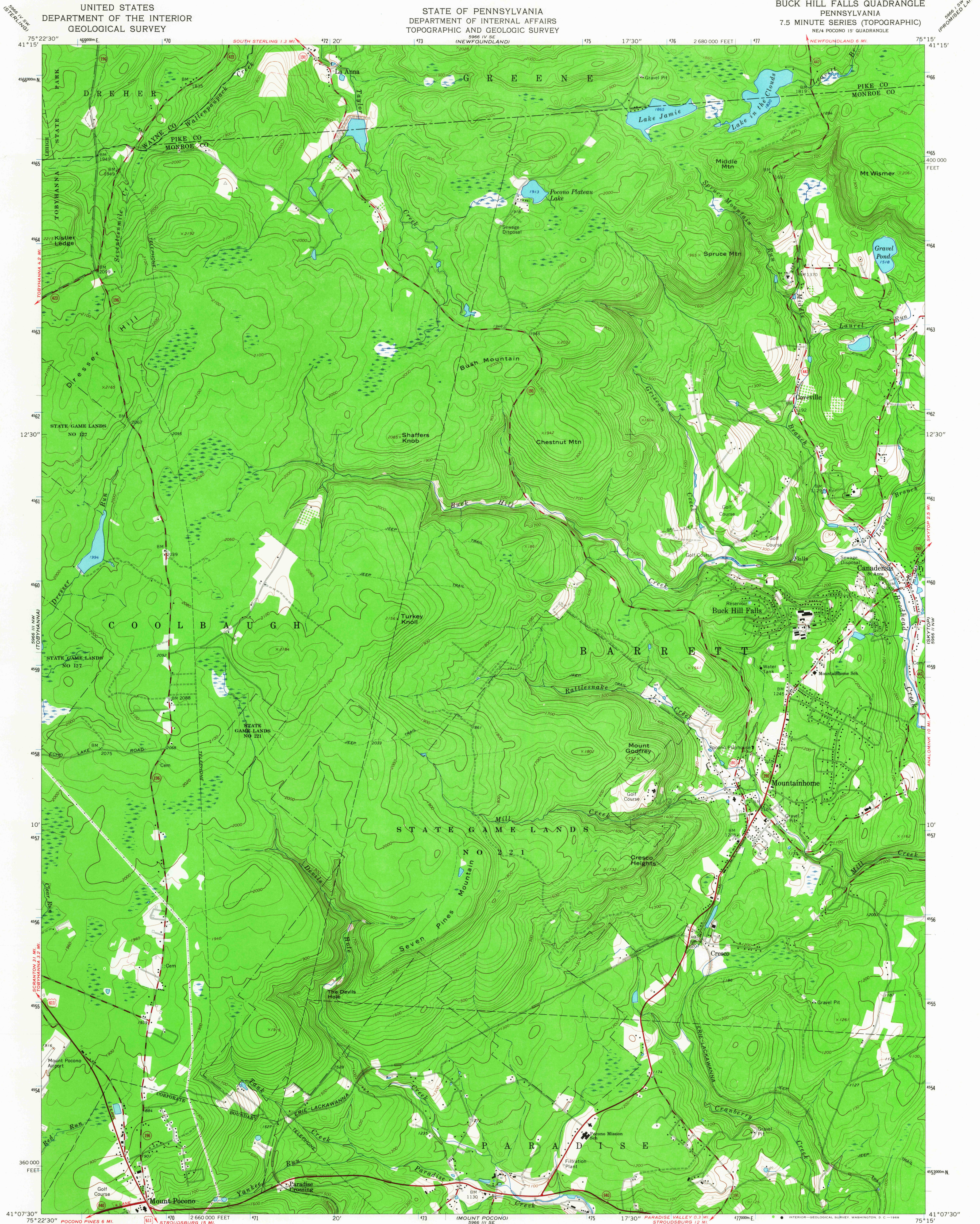


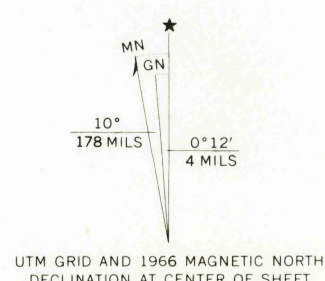
UNITED STATES  
DEPARTMENT OF THE INTERIOR  
GEOLOGICAL SURVEY

STATE OF PENNSYLVANIA  
DEPARTMENT OF INTERNAL AFFAIRS  
TOPOGRAPHIC AND GEOLOGIC SURVEY

BUCK HILL FALLS QUADRANGLE  
PENNSYLVANIA  
7.5 MINUTE SERIES (TOPOGRAPHIC)  
NE/4 POCONO 15' QUADRANGLE



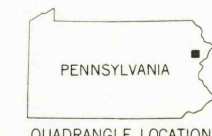
Maped, edited, and published by the Geological Survey  
Control by USGS and USC&GS  
Topography by photogrammetric methods from aerial  
photographs taken 1963. Field checked 1966  
Polyconic projection. 1927 North American datum  
10,000-foot grid based on Pennsylvania coordinate system, north zone  
1000-meter Universal Transverse Mercator grid ticks,  
zone 18, shown in blue  
Fine red dashed lines indicate selected fence and field lines where  
generally visible on aerial photographs. This information is unchecked



SCALE 1:24,000  
CONTOUR INTERVAL 20 FEET  
DATUM IS MEAN SEA LEVEL

USGS  
Historical File  
Topographic Division

ROAD CLASSIFICATION  
Heavy-duty ——— Light-duty ———  
Medium-duty ——— Unimproved dirt ———  
U.S. Route ——— State Route ———



U.S.G.S.  
FILE COPY  
TOPOGRAPHIC DIVISION

BUCK HILL FALLS, PA.  
NE/4 POCONO 15' QUADRANGLE  
N4107.5—W7515/7.5

1966  
AMS 5966 III NE—SERIES V831

THIS MAP COMPLIES WITH NATIONAL MAP ACCURACY STANDARDS  
FOR SALE BY U.S. GEOLOGICAL SURVEY, WASHINGTON, D. C. 20242  
A FOLDER DESCRIBING TOPOGRAPHIC MAPS AND SYMBOLS IS AVAILABLE ON REQUEST

3560  
AUG 6 1968