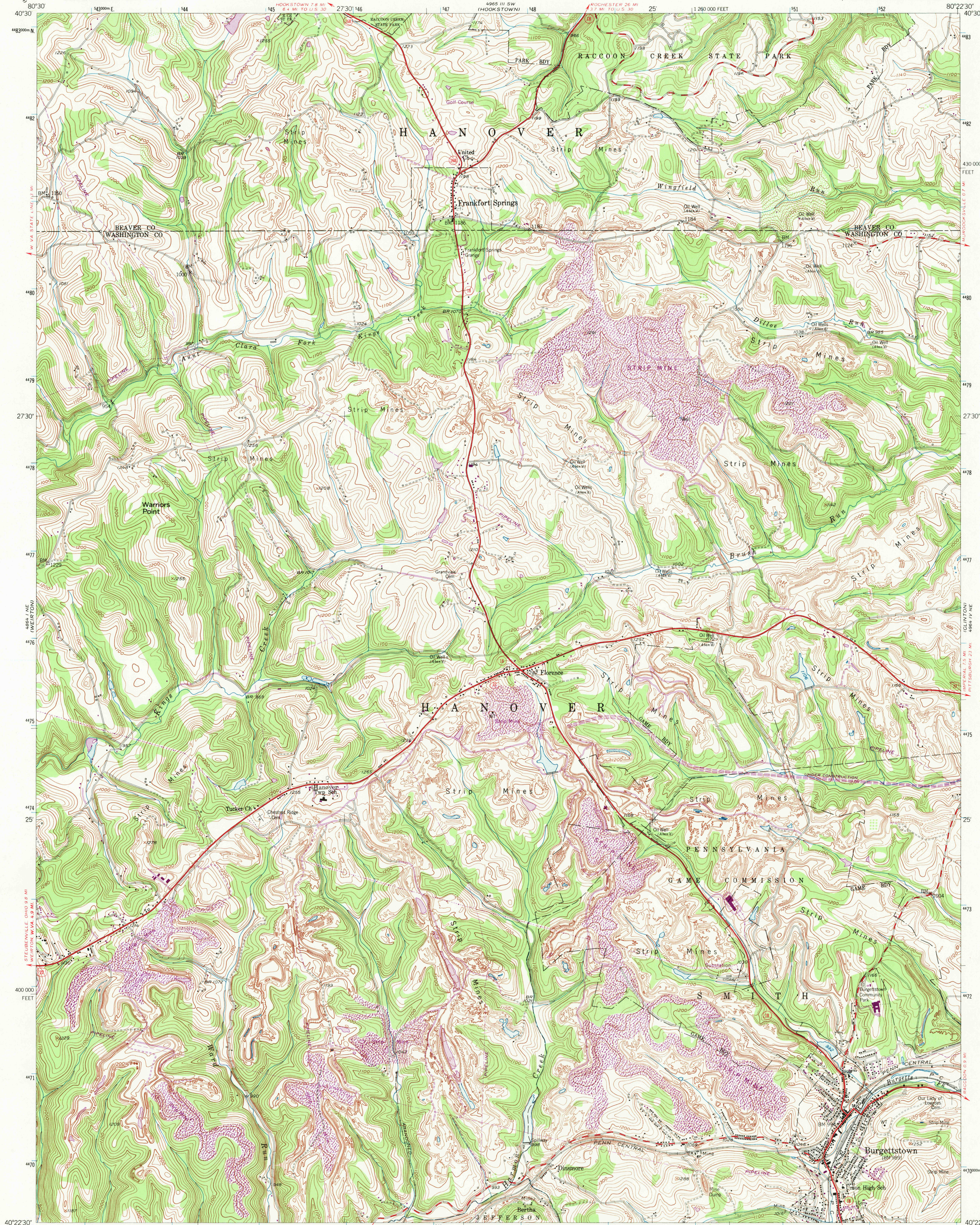


UNITED STATES
DEPARTMENT OF THE INTERIOR
GEOLOGICAL SURVEY

BURGETTSTOWN QUADRANGLE
PENNSYLVANIA
7.5 MINUTE SERIES (TOPOGRAPHIC)
NW/4 BURGETTSTOWN 15' QUADRANGLE



Mapped, edited, and published by the Geological Survey
Control by USGS and USC&GS

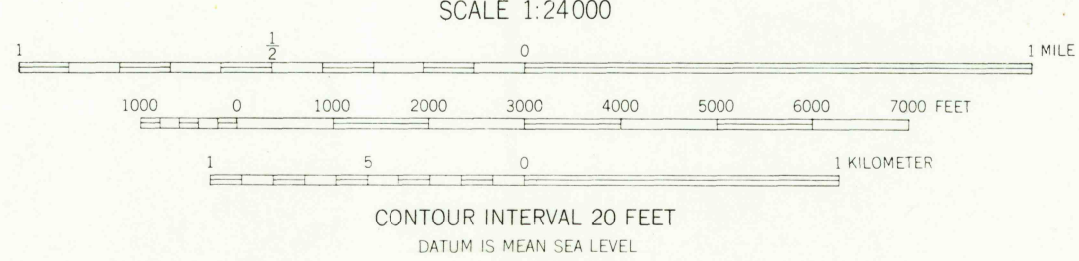
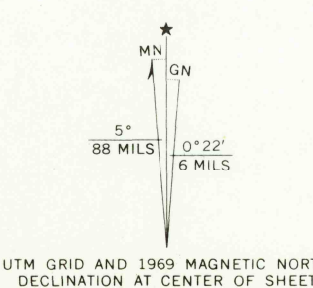
Topography from aerial photographs by multiplex methods
Aerial photographs taken 1952. Field check 1954

Polyconic projection. 1927 North American datum
10,000 foot grid based on Pennsylvania coordinate system,
south zone

1000-meter Universal Transverse Mercator grid ticks, zone 17,
shown in blue

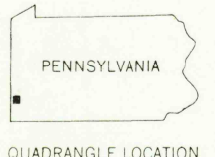
Revisions shown in purple compiled in cooperation with
State of Pennsylvania agencies, from aerial photographs taken 1969

This information not field checked



THIS MAP COMPLIES WITH NATIONAL MAP ACCURACY STANDARDS
FOR SALE BY U.S. GEOLOGICAL SURVEY, WASHINGTON, D.C. 20242
A FOLDER DESCRIBING TOPOGRAPHIC MAPS AND SYMBOLS IS AVAILABLE ON REQUEST

USGS
Historical File
Topographic Division



ROAD CLASSIFICATION
Heavy-duty ——— Light-duty ———
Medium-duty ——— Unimproved dirt ———
U.S. Route ——— State Route ———

BURGETTSTOWN, PA.
NW/4 BURGETTSTOWN 15' QUADRANGLE
N4022.5—W8022.5/7.5

1954
PHOTOREVISED 1969
AMS 4964 IV NW—SERIES V831

U.S.G.S.
FILE COPY
TOPOGRAPHIC DIVISION

OCT 27 1969