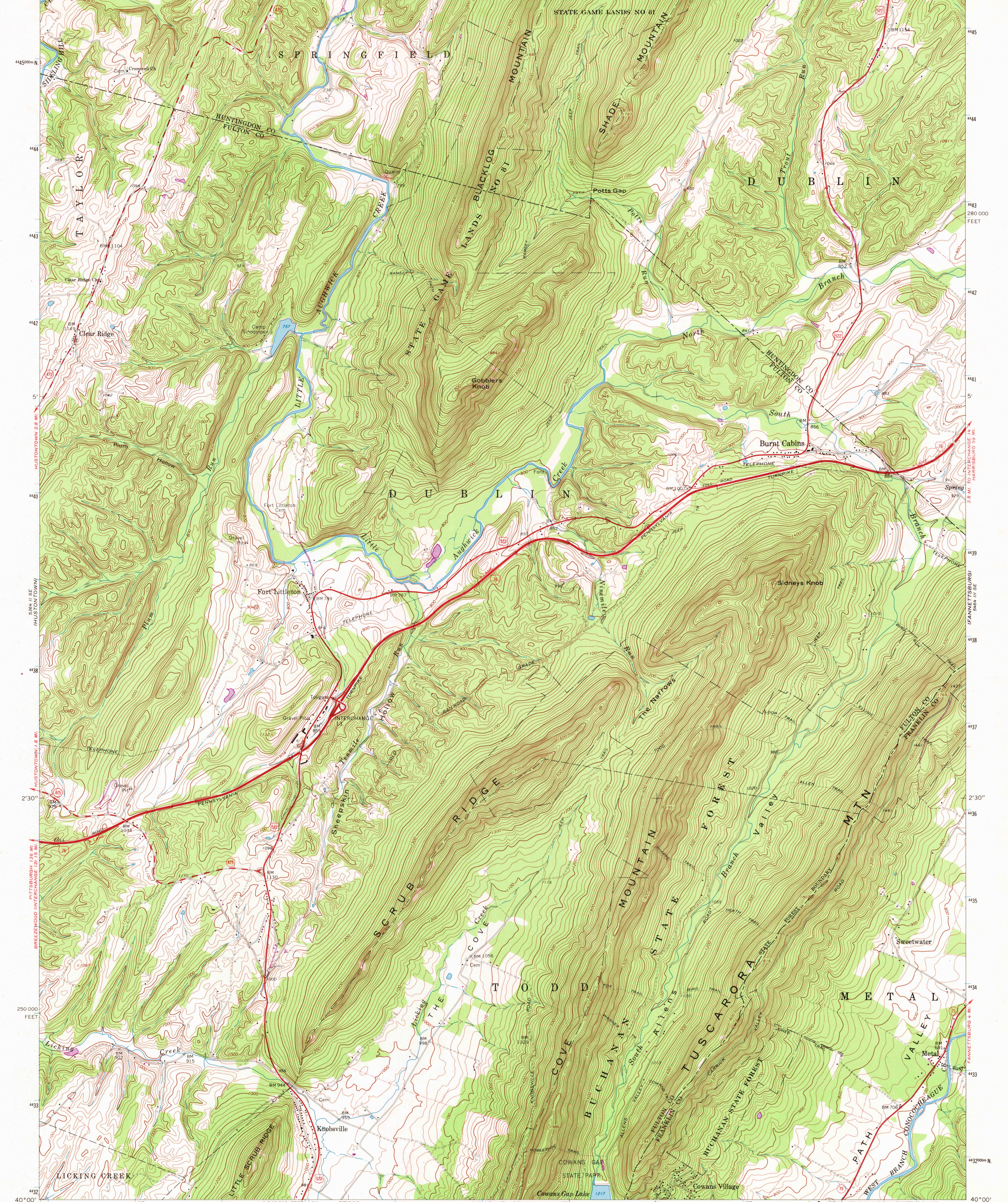


78°00' 40°07'30" 245000 E 246 57°30' 248 55' 252 1 960 000 FEET 754 77°52'30" 40°07'30"



Mapped, edited, and published by the Geological Survey
Control by USGS and USC&GS

Topography by photogrammetric methods from aerial photographs
taken 1966. Field checked 1966

Polyconic projection. 1927 North American datum
10,000-foot grid based on Pennsylvania coordinate system, south zone
1000-meter Universal Transverse Mercator grid ticks, zone 18,
shown in blue

Fine red dashed lines indicate selected fence and field lines where
generally visible on aerial photographs. This information is unchecked

Revisions shown in purple compiled in cooperation with
State of Pennsylvania agencies from aerial photographs
taken 1973. This information not field checked

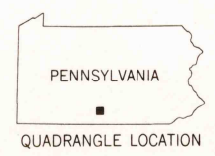
UTM GRID AND 1973 MAGNETIC NORTH
DECLINATION AT CENTER OF SHEET

SCALE 1:24,000
1 000 0 1000 2000 3000 4000 5000 6000 7000 FEET
1 0 1 2 3 4 5 6 7 8 9 10 KILOMETER

CONTOUR INTERVAL 20 FEET
DATUM IS MEAN SEA LEVEL

THIS MAP COMPLIES WITH NATIONAL MAP ACCURACY STANDARDS
FOR SALE BY U.S. GEOLOGICAL SURVEY, WASHINGTON, D.C. 20242
A FOLDER DESCRIBING TOPOGRAPHIC MAPS AND SYMBOLS IS AVAILABLE ON REQUEST

ROAD CLASSIFICATION
Primary highway, all weather, hard surface
Secondary highway, all weather, unimproved surface, fair or dry weather
Interstate Route U.S. Route State Route



BURNT CABINS, PA.

N4000—W7752.5/7.5

1966
PHOTOREVISED 1973
AMS 5464 III SW—SERIES V831

USGS
Historical File
Topographic Division

5315