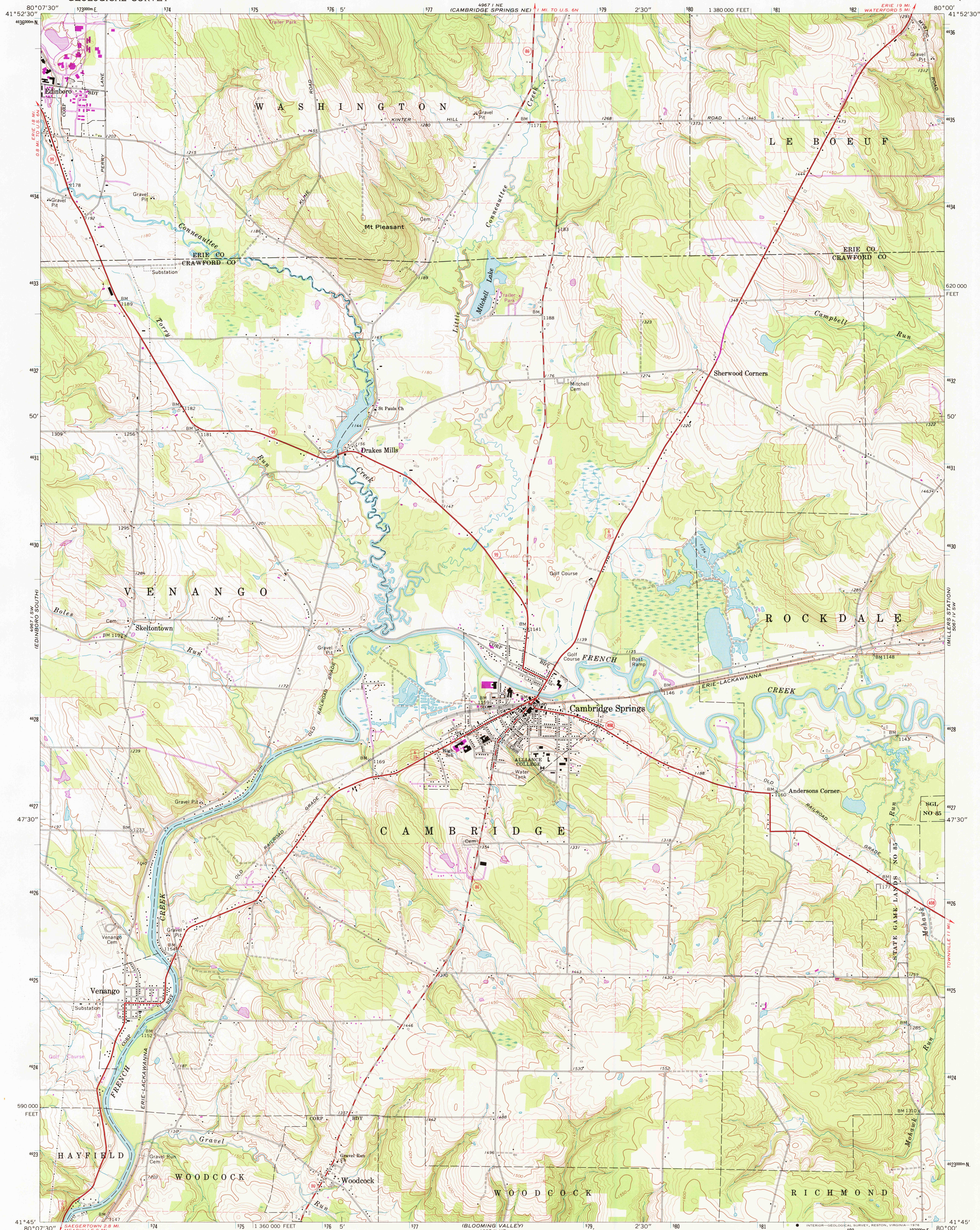


UNITED STATES
DEPARTMENT OF THE INTERIOR
GEOLOGICAL SURVEY

CAMBRIDGE SPRINGS QUADRANGLE
PENNSYLVANIA
7.5 MINUTE SERIES (TOPOGRAPHIC)



Mapped, edited, and published by the Geological Survey

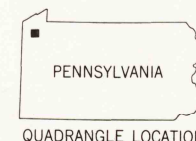
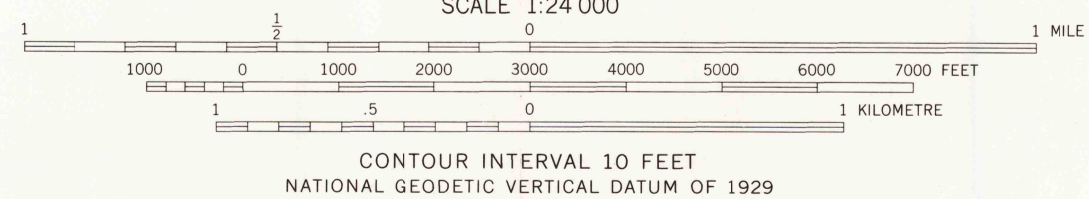
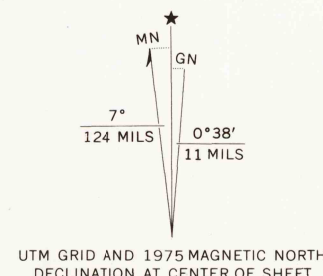
Control by USGS and USC&GS

Topography by photogrammetric methods from aerial photographs taken 1964 and 1965. Field checked 1968

Polyconic projection. 1927 North American datum 10,000-foot grid based on Pennsylvania coordinate system, north zone 1000-metre Universal Transverse Mercator grid ticks, zone 17, shown in blue

Fine red dashed lines indicate selected fence and field lines where generally visible on aerial photographs. This information is unchecked

Revisions shown in purple compiled in cooperation with State of Pennsylvania agencies from aerial photographs taken 1975. This information not field checked



ROAD CLASSIFICATION	
Primary highway, hard surface	Light-duty road, hard or improved surface
Secondary highway, hard surface	Unimproved road
Interstate Route	U. S. Route
	State Route

CAMBRIDGE SPRINGS, PA.

USGS
HISTORICAL FILE
TOPOGRAPHIC DIVISION

N4145-W8000/7.5
1968
PHOTOREVISED 1975
AMS 4967 I SE-SERIES 7831

MAR 0 5 1976

THIS MAP COMPLIES WITH NATIONAL MAP ACCURACY STANDARDS
FOR SALE BY U. S. GEOLOGICAL SURVEY, RESTON, VIRGINIA 22092
A FOLDER DESCRIBING TOPOGRAPHIC MAPS AND SYMBOLS IS AVAILABLE ON REQUEST