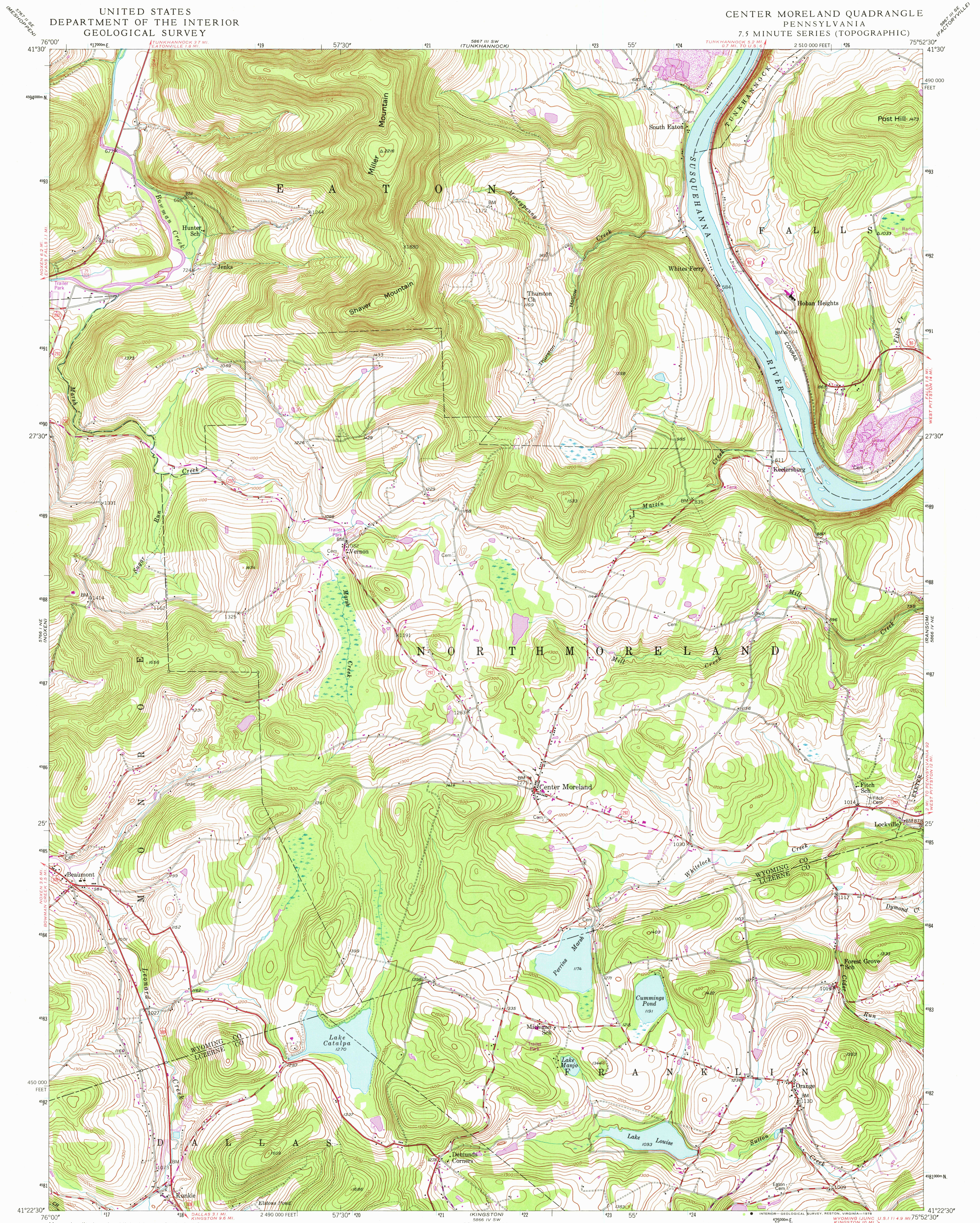


UNITED STATES
DEPARTMENT OF THE INTERIOR
GEOLOGICAL SURVEY

CENTER MORELAND QUADRANGLE
PENNSYLVANIA
7.5 MINUTE SERIES (TOPOGRAPHIC)



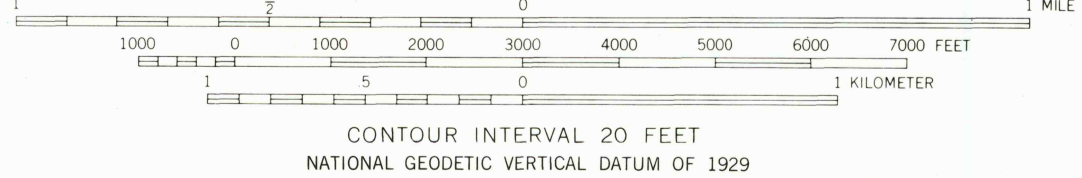
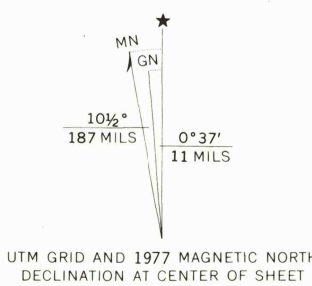
Maped, edited, and published by the Geological Survey
Control by USGS and USC&GS

Topography from aerial photographs by multiplex methods
Aerial photographs taken 1942. Field check, 1946

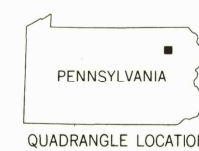
Polycyclic projection. 1927 North American datum
10,000-foot grid based on Pennsylvania coordinate system,
north zone.

1000-meter Universal Transverse Mercator grid ticks, zone 18,
shown in blue

Revisions shown in purple compiled in cooperation with State of
Pennsylvania agencies from aerial photographs taken 1969 and 1976
This information not field checked. Map edited 1977



ROAD CLASSIFICATION	
Heavy-duty	Light-duty
Medium-duty	Unimproved dirt
State Route	



CENTER MORELAND, PA.
N4122.5-W7552.5/7.5

USGS
Historical File
Topographic Division
1946
PHOTOREVISED 1969 AND 1977
AMS 5866 IV NW-SERIES V831

JUL 11 1978

THIS MAP COMPLIES WITH NATIONAL MAP ACCURACY STANDARDS
FOR SALE BY U.S. GEOLOGICAL SURVEY, RESTON, VIRGINIA 22092
A FOLDER DESCRIBING TOPOGRAPHIC MAPS AND SYMBOLS IS AVAILABLE ON REQUEST