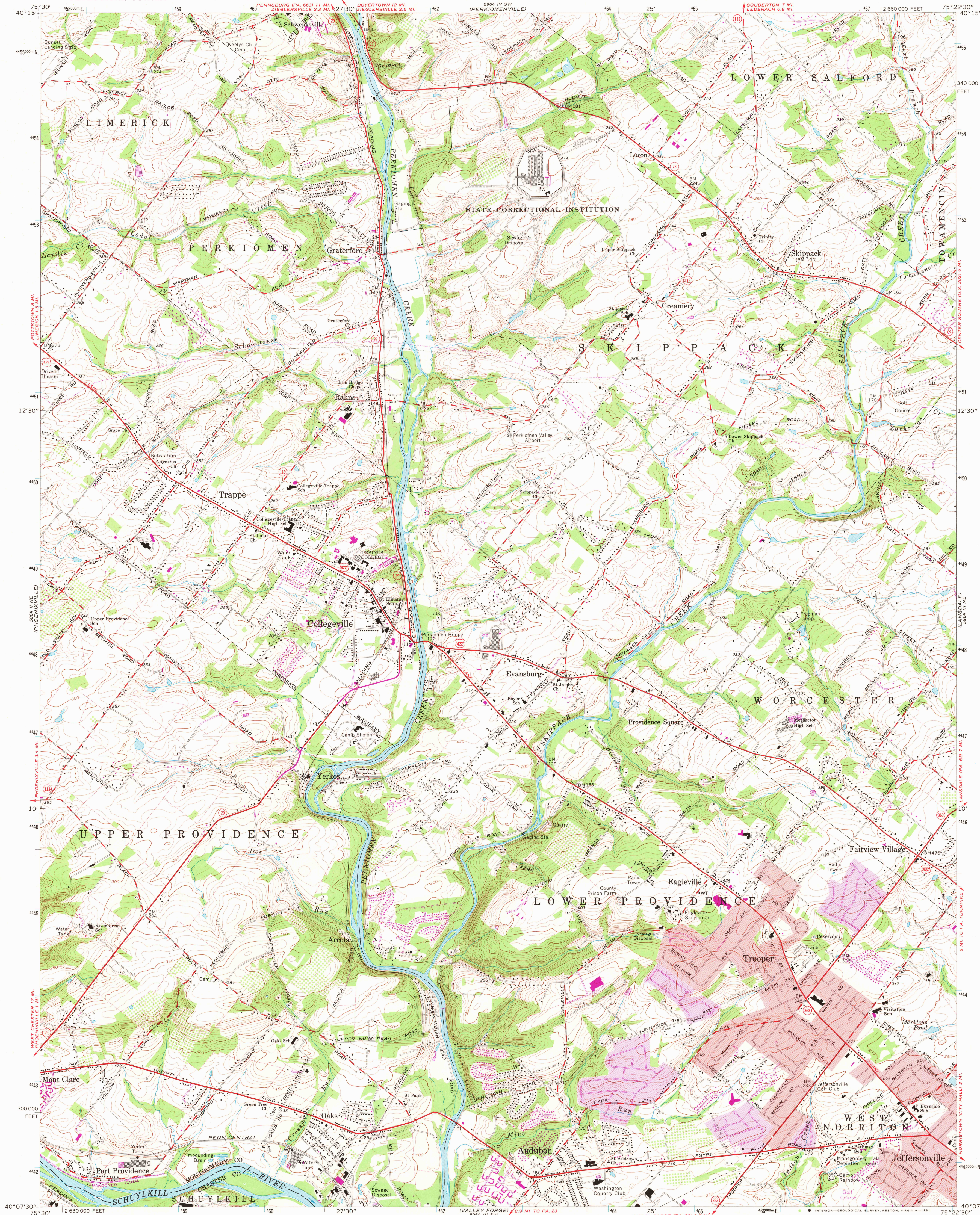


UNITED STATES
DEPARTMENT OF THE INTERIOR
GEOLOGICAL SURVEY

COLLEGEVILLE QUADRANGLE
PENNSYLVANIA
7.5 MINUTE SERIES (TOPOGRAPHIC)



Mapped, edited, and published by the Geological Survey
in cooperation with Pennsylvania Department of
Internal Affairs, Topographic and Geologic Survey

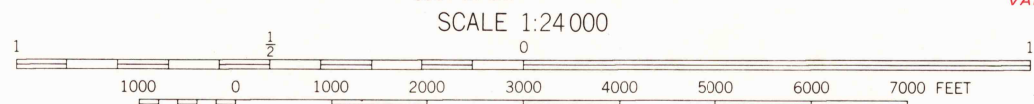
Control by USGS and USC/GS

Topography by photogrammetric methods from aerial photographs
taken 1950. Field checked 1951. Revised from aerial
photographs taken 1965. Field checked 1966

Polyconic projection. 10,000-foot grid ticks based on Pennsylvania
coordinate system, south zone. 1000-meter Universal Transverse
Mercator grid ticks, zone 18, shown in blue. 1927 North
American Datum. To place on predicted North American
Datum 1983, move the projection lines 6 meters south and
31 meters west as shown by dashed corner ticks

Fine red dashed lines indicate selected fence and field lines where
generally visible on aerial photographs. This information is unchecked

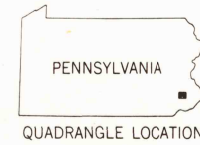
Red tint indicates areas in which only landmark buildings are shown



CONTOUR INTERVAL 10 FEET

NATIONAL GEODETIC VERTICAL DATUM OF 1929

THIS MAP COMPLIES WITH NATIONAL MAP ACCURACY STANDARDS
FOR SALE BY U. S. GEOLOGICAL SURVEY, RESTON, VIRGINIA 22092,
A FOLDER DESCRIBING TOPOGRAPHIC MAPS AND SYMBOLS IS AVAILABLE ON REQUEST



ROAD CLASSIFICATION

Heavy-duty ——— Light-duty ———
Medium-duty ——— Unimproved dirt ———

U.S. Route ——— State Route ———

COLLEGEVILLE, PA.

N4007.5—W7522.5/7.5

1966

PHOTOREVISED 1973
AMS 5984 III NW—SERIES V851

Revisions shown in purple compiled from aerial photographs
taken 1973. This information not field checked
Purple tint indicates extension of urban areas

USGS
Historical File
National Mapping Div.

6700
MAY 20 1981