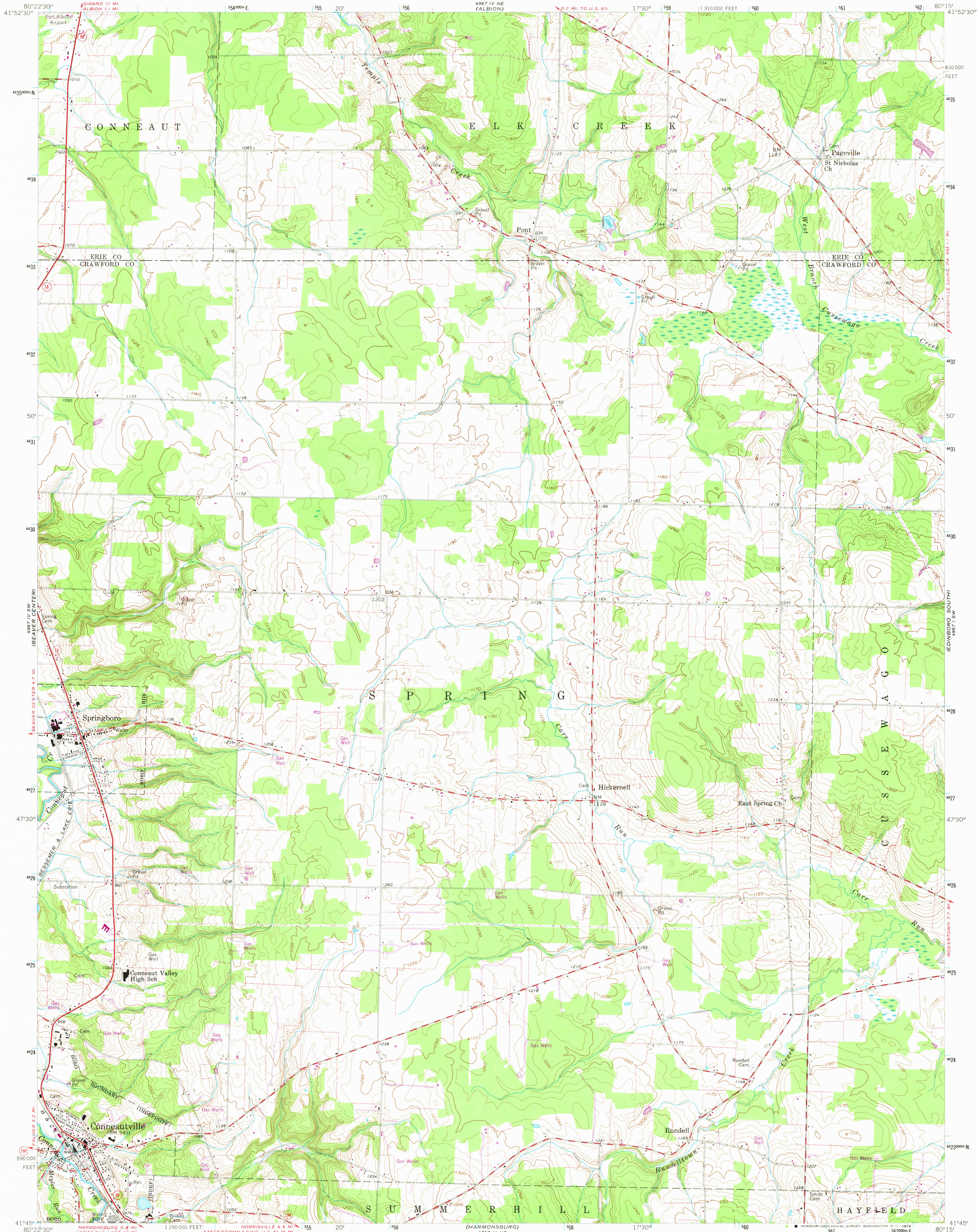


UNITED STATES
DEPARTMENT OF THE INTERIOR
GEOLOGICAL SURVEY

COMMONWEALTH OF PENNSYLVANIA
DEPARTMENT OF ENVIRONMENTAL RESOURCES
TOPOGRAPHIC AND GEOLOGIC SURVEY

CONNEAUTVILLE QUADRANGLE
PENNSYLVANIA
7.5 MINUTE SERIES (TOPOGRAPHIC)



Mapped, edited, and published by the Geological Survey

Control by USGS and USC&GS

Topography from aerial photographs by photogrammetric methods

Aerial photographs taken 1957. Field check 1959

Polyconic projection. 1927 North American datum

10,000-foot grid based on Pennsylvania coordinate system,

north zone

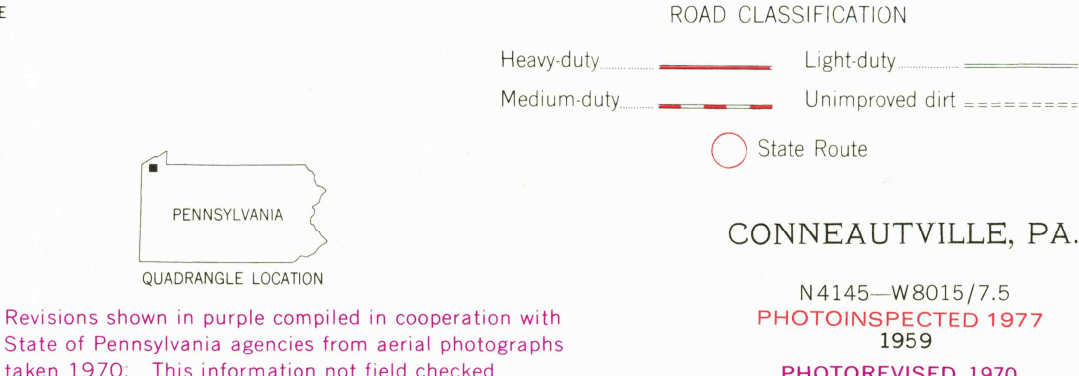
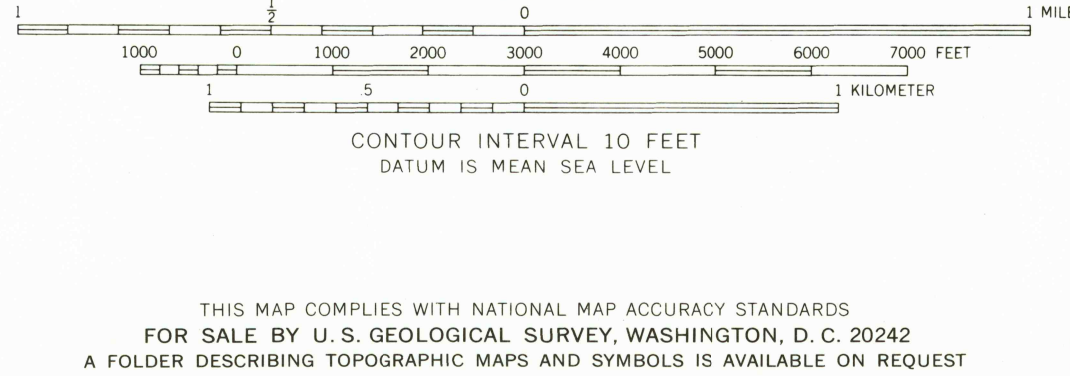
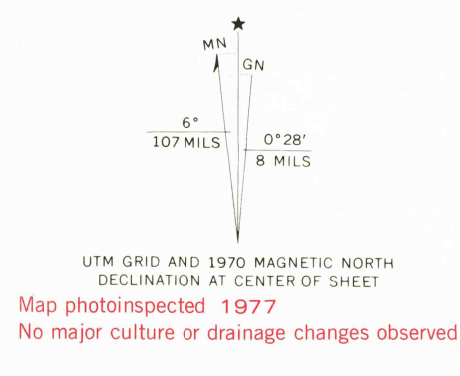
1000-meter Universal Transverse Mercator grid ticks,

zone 17, shown in blue

Fine red dashed lines indicate selected fence and field lines

visible on aerial photographs. This information is unchecked

Unchecked elevations are shown in brown



CONNEAUTVILLE, PA.

N4145-W8015/7.5

PHOTOINSPECTED 1977

1959

PHOTOREVISED 1970

AMS 4967 IV SE-SERIES V831

Revisions shown in purple compiled in cooperation with

State of Pennsylvania agencies from aerial photographs

taken 1970: This information not field checked

THIS MAP COMPLIES WITH NATIONAL MAP ACCURACY STANDARDS

FOR SALE BY U. S. GEOLOGICAL SURVEY, WASHINGTON, D. C. 20242

A FOLDER DESCRIBING TOPOGRAPHIC MAPS AND SYMBOLS IS AVAILABLE ON REQUEST

UTM GRID AND 1970 MAGNETIC NORTH

DECLINATION AT CENTER OF SHEET

Map photoinspected 1977

No major culture or drainage changes observed

QUADRANGLE LOCATION

PENNSYLVANIA

CONNEAUTVILLE

4967 IV SE

4967 IV NW

4967 IV SW

4967 IV NE

4967 IV SE

4967 IV SW

4967 IV NE

4967 IV SE

4967 IV SW

4967 IV NE

4967 IV SE

4967 IV SW

4967 IV NE

4967 IV SE

4967 IV SW

4967 IV NE

4967 IV SE

4967 IV SW

4967 IV NE

4967 IV SE

4967 IV SW

4967 IV NE

4967 IV SE

4967 IV SW

4967 IV NE

4967 IV SE

4967 IV SW

4967 IV NE

4967 IV SE

4967 IV SW

4967 IV NE

4967 IV SE

4967 IV SW

4967 IV NE

4967 IV SE

4967 IV SW

4967 IV NE

4967 IV SE

4967 IV SW

4967 IV NE

4967 IV SE

4967 IV SW

4967 IV NE

4967 IV SE

4967 IV SW

4967 IV NE

4967 IV SE

4967 IV SW

4967 IV NE

4967 IV SE

4967 IV SW

4967 IV NE

4967 IV SE

4967 IV SW

4967 IV NE

4967 IV SE

4967 IV SW

4967 IV NE

4967 IV SE

4967 IV SW

4967 IV NE

4967 IV SE

4967 IV SW

4967 IV NE

4967 IV SE

4967 IV SW

4967 IV NE

4967 IV SE

4967 IV SW

4967 IV NE

4967 IV SE

4967 IV SW

4967 IV NE

4967 IV SE

4967 IV SW

4967 IV NE

4967 IV SE

4967 IV SW

4967 IV NE

4967 IV SE

4967 IV SW

4967 IV NE

4967 IV SE

4967 IV SW

4967 IV NE

4967 IV SE

4967 IV SW

4967 IV NE

4967 IV SE

4967 IV SW

4967 IV NE

4967 IV SE

4967 IV SW

4967 IV NE

4967 IV SE

4967 IV SW

4967 IV NE

4967 IV SE

4967 IV SW

4967 IV NE

4967 IV SE

4967 IV SW

4967 IV NE

4967 IV SE

4967 IV SW

4967 IV NE

4967 IV SE

4967 IV SW

4967 IV NE

4967 IV SE

4967 IV SW

4967 IV NE

4967 IV SE

4967 IV SW

4967 IV NE

4967 IV SE

4967 IV SW

4967 IV NE

4967 IV SE

4967 IV SW

4967 IV NE

4967 IV SE

4967 IV SW

4967 IV NE

4967 IV SE

4967 IV SW

4967 IV NE

4967 IV SE

4967 IV SW

4967 IV NE

4967 IV SE

4967 IV SW

4967 IV NE

4967 IV SE

4967 IV SW

4967 IV NE

4967 IV SE

4967 IV SW

4967 IV NE

4967 IV SE

4967 IV SW

4967 IV NE

4967 IV SE

4967 IV SW

4967 IV NE

4967 IV SE

4967 IV SW

4967 IV NE

4967 IV SE

4967 IV SW

4967 IV NE

4967 IV SE

4967 IV SW

4967 IV NE

4967 IV SE

4967 IV SW

4967 IV NE

4967 IV SE

4967 IV SW

4967 IV NE

4967 IV SE

4967 IV SW

4967 IV NE

4967 IV SE

4967 IV SW

4967 IV NE

4967 IV SE

4967 IV SW

4967 IV NE

4967 IV SE

4967 IV SW

4967 IV NE

4967 IV SE

4967 IV SW

4967 IV NE

4967 IV SE

4967 IV SW

4967 IV NE

4967 IV SE

4967 IV SW

4967 IV NE

4967 IV SE

4967 IV SW

4967 IV NE

4967 IV SE

4967 IV SW

4967 IV NE

4967 IV SE

4967 IV SW

4967 IV NE

4967 IV SE

4967 IV SW

4967 IV NE

4967 IV SE

4967 IV SW

4967 IV NE

4967 IV SE

4967 IV SW

4967 IV NE

4967 IV SE

4967 IV SW

4967 IV NE

4967 IV SE

4967 IV SW

4967 IV NE

4967 IV SE

4967 IV SW

4967 IV NE

4967 IV SE

4967 IV SW

4967 IV NE

4967 IV SE

4967 IV SW

4967 IV NE

4967 IV SE

4967 IV SW

4967 IV NE

4967 IV SE

4967 IV SW

4967 IV NE

4967 IV SE

4967 IV SW

4967 IV NE

4967 IV SE

4967 IV SW

4967 IV NE

4967 IV SE

4967 IV SW

4967 IV NE

4967 IV SE

4967 IV SW

4967 IV NE

4967 IV SE

4967 IV SW

4967 IV NE

4967 IV SE

4967 IV SW

4967 IV NE

4967 IV SE

4967 IV SW

4967 IV NE

4967 IV SE

4967 IV SW

4967 IV NE

4967 IV SE

4967 IV SW

4967 IV NE

4967 IV SE

4967 IV SW

4967 IV NE

4967 IV SE

4967 IV SW

4967 IV NE