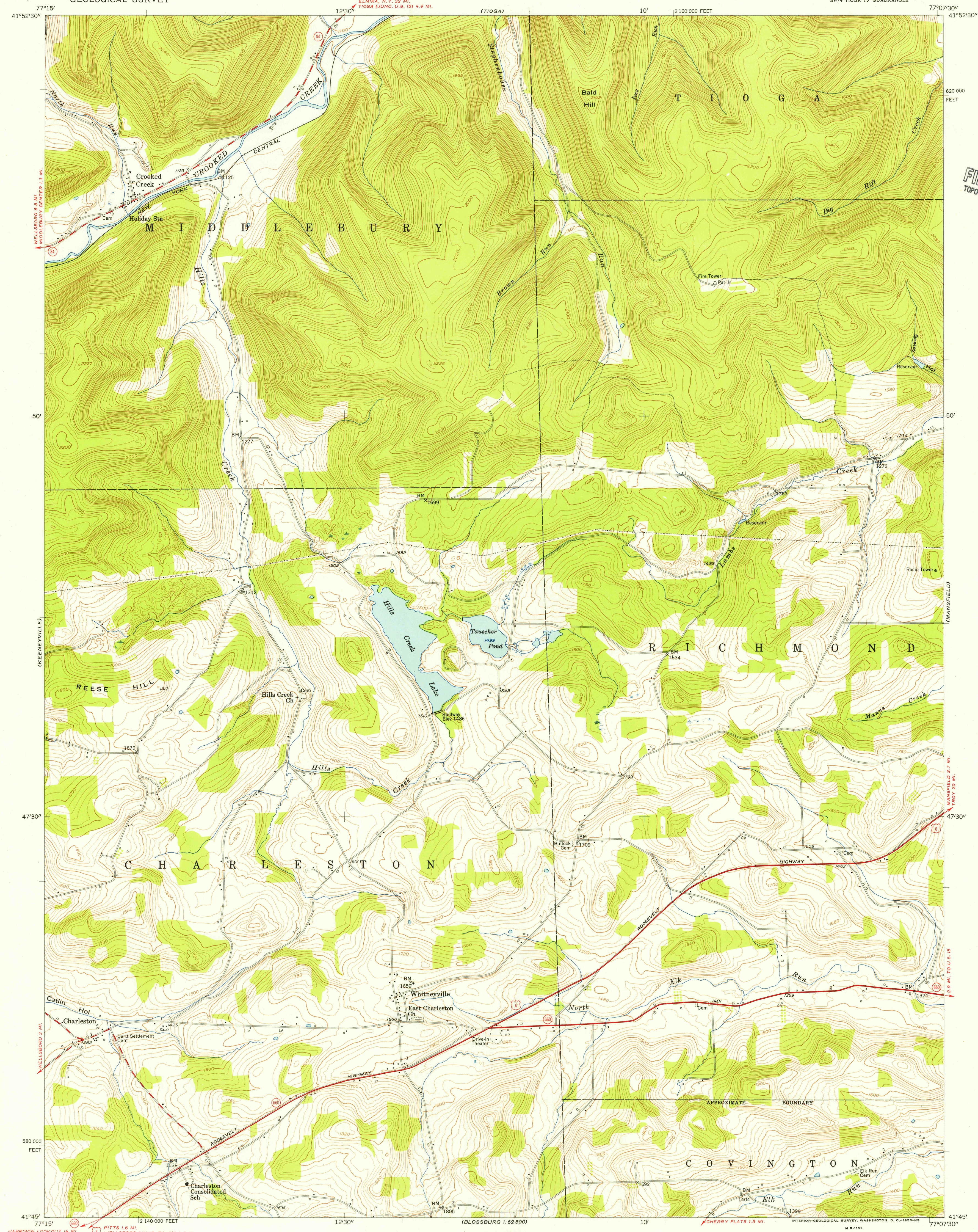


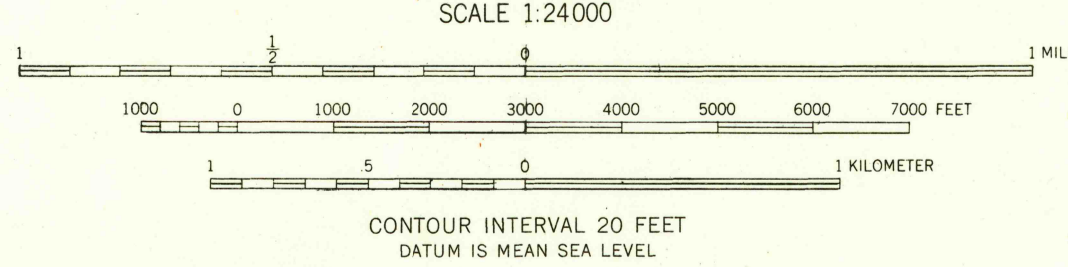
UNITED STATES  
DEPARTMENT OF THE INTERIOR  
GEOLOGICAL SURVEY

CROOKED CREEK QUADRANGLE  
PENNSYLVANIA—TIOGA CO.  
7.5 MINUTE SERIES (TOPOGRAPHIC)  
SW/4 TIOGA 15' QUADRANGLE

U.S.G.S.  
FILE COPY  
TOPOGRAPHIC DIVISION



Mapped, edited, and published by the Geological Survey  
Control by USGS and USC&GS  
Topography from aerial photographs by Kelsh plotter  
Aerial photographs taken 1952. Field check 1954  
Polyconic projection. 1927 North American datum  
10,000-foot grid based on Pennsylvania coordinate system,  
north zone  
Unchecked elevations are shown in brown



ROAD CLASSIFICATION  
Heavy-duty ——— Light-duty ———  
Medium-duty ——— Unimproved dirt ———  
U. S. Route ——— State Route ———

CROOKED CREEK, PA.  
SW/4 TIOGA 15' QUADRANGLE  
N4145-W7707.5/7.5

1954

U.S.G.S.  
FILE COPY  
TOPOGRAPHIC DIVISION

MAR 2 1956

2580