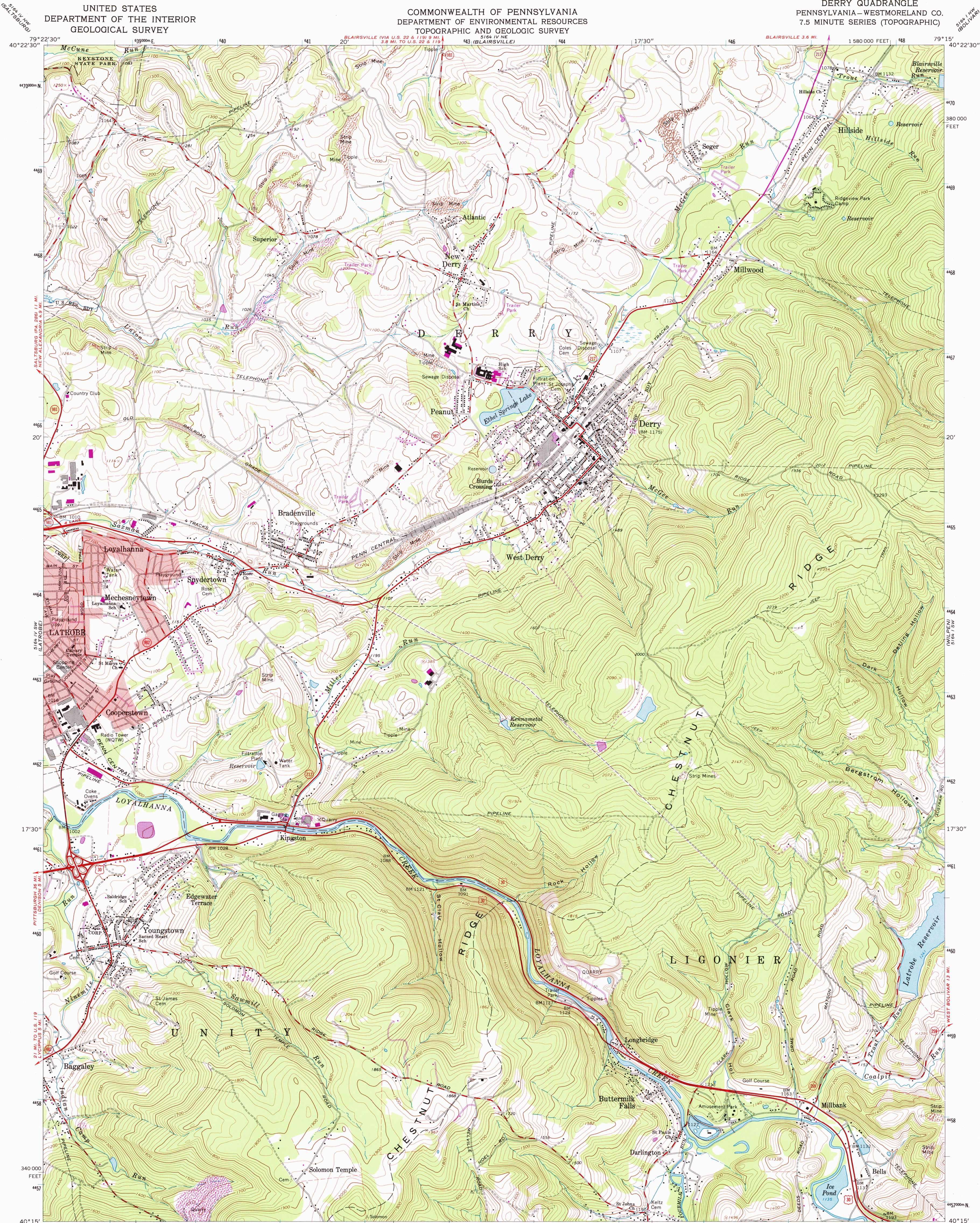


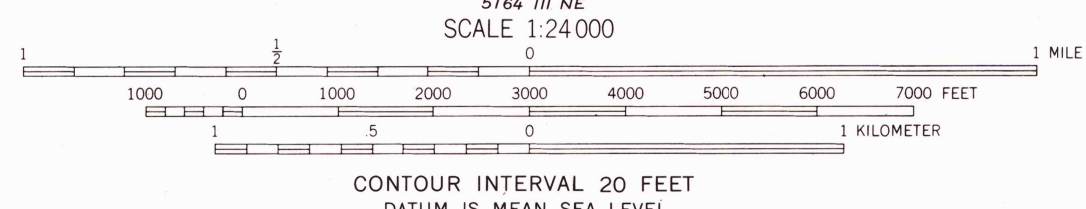
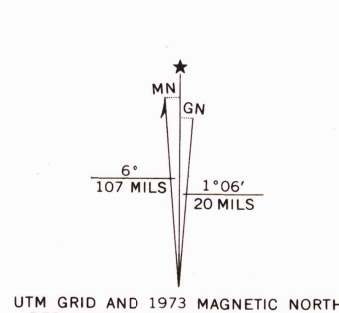
UNITED STATES  
DEPARTMENT OF THE INTERIOR  
GEOLOGICAL SURVEY

COMMONWEALTH OF PENNSYLVANIA  
DEPARTMENT OF ENVIRONMENTAL RESOURCES  
TOPOGRAPHIC AND GEOLOGIC SURVEY

DERRY QUADRANGLE  
PENNSYLVANIA—WESTMORELAND CO.  
7.5 MINUTE SERIES (TOPOGRAPHIC)



Mapped, edited, and published by the Geological Survey  
Control by USGS and USC&GS  
Topography by photogrammetric methods from aerial photographs  
taken 1962. Field checked 1964  
Polyconic projection. 1927 North American datum  
10,000-foot grid based on Pennsylvania coordinate system, south zone  
1000-meter Universal Transverse Mercator grid ticks, zone 17,  
shown in blue  
Fine red dashed lines indicate selected fence and field lines which  
generally visible on aerial photographs. This information is unchecked  
Red tint indicates area in which only landmark buildings are shown  
U. S. Reservation boundary from maps by U. S. Corps of Engineers  
Area covered by dashed light-blue pattern is subject to controlled  
inundation by Loyalhanna Dam  
Map photorevised 1977  
No major culture or drainage changes observed



ROAD CLASSIFICATION  
Heavy-duty ——— Light-duty ———  
Medium-duty ——— Unimproved dirt ———  
U. S. Route ——— State Route ———

DERRY, PA.

N4015—W7915/7.5  
PHOTOINSPECTED 1977  
1964  
PHOTOREVISED 1973  
AMS 5164 IV SE—SERIES V831

THIS MAP COMPLIES WITH NATIONAL MAP ACCURACY STANDARDS  
FOR SALE BY U. S. GEOLOGICAL SURVEY, WASHINGTON, D. C. 20242  
A FOLDER DESCRIBING TOPOGRAPHIC MAPS AND SYMBOLS IS AVAILABLE ON REQUEST

Revisions shown in purple compiled in cooperation with  
State of Pennsylvania agencies from aerial photographs  
taken 1973. This information not field checked

RETURN TO:  
U.S. GEOLOGICAL SURVEY  
WASHINGTON, D.C. 20506