

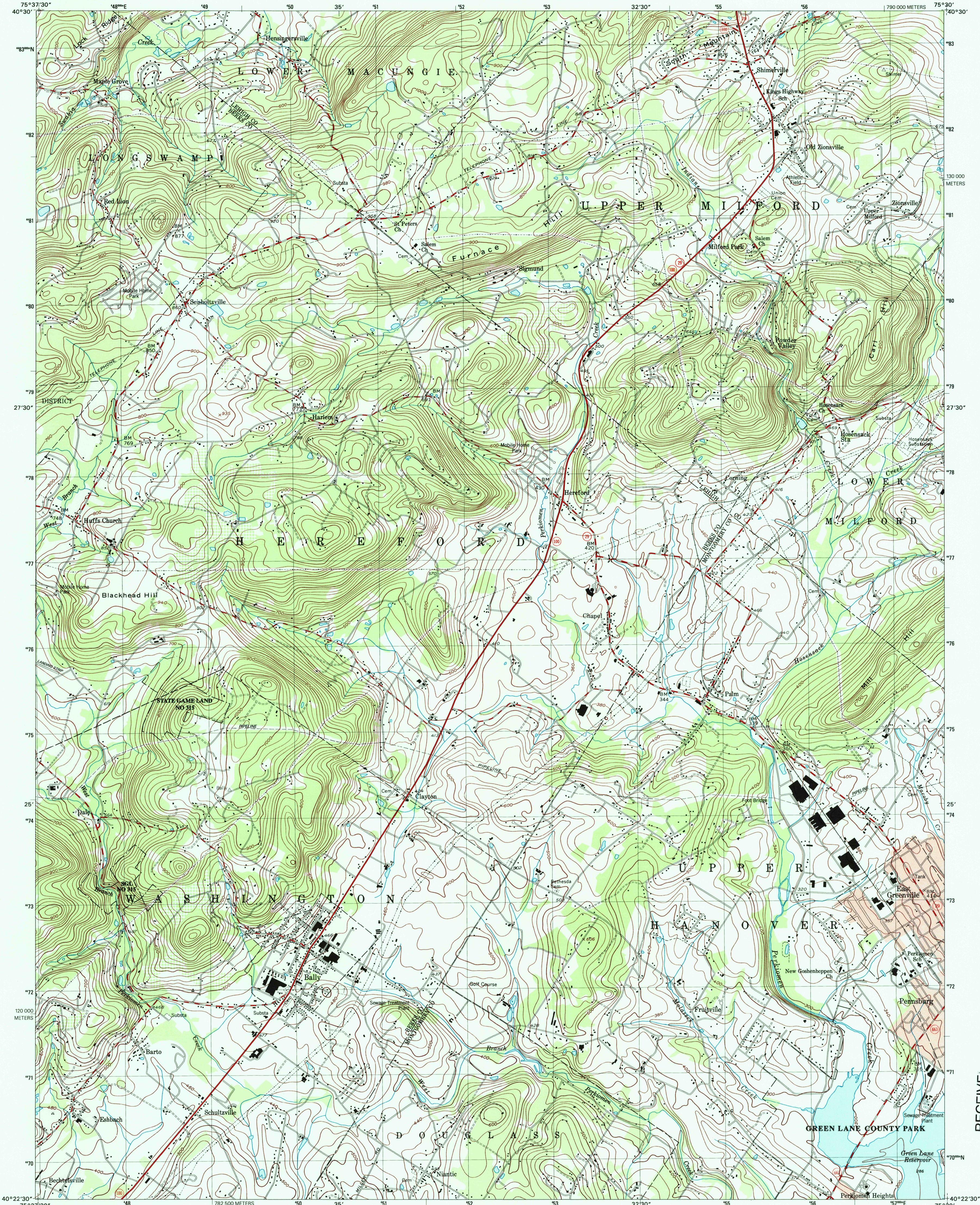


U.S. DEPARTMENT OF THE INTERIOR
U.S. GEOLOGICAL SURVEY



COMMONWEALTH OF PENNSYLVANIA
DEPARTMENT OF CONSERVATION AND NATURAL RESOURCES
BUREAU OF TOPOGRAPHIC AND GEOLOGIC SURVEY

EAST GREENVILLE QUADRANGLE
PENNSYLVANIA
7.5-MINUTE SERIES (TOPOGRAPHIC)



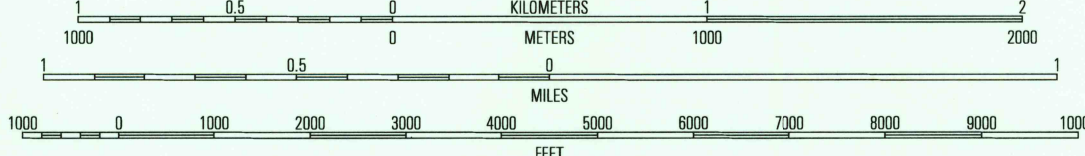
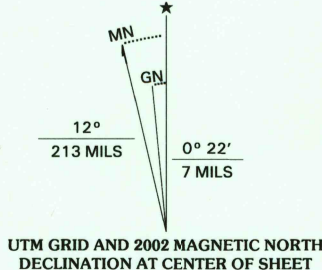
RECEIVED
JUL 3 1 2002
USGS
HISTORICAL MAP ARCHIVE

Produced by the United States Geological Survey
in cooperation with Pennsylvania Department of
Conservation and Natural Resources, Bureau of
Topographic and Geologic Survey

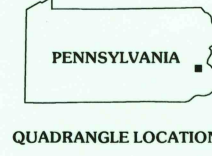
Topography compiled by photogrammetric methods from imagery
dated 1942. Planimetry derived from imagery taken 1999 and
other sources. Survey control current as of 1956. Boundaries
current as of 2001.

North American Datum of 1983 (NAD 83). Projection and
1000-meter grid: Universal Transverse Mercator, zone 18.
2500-meter ticks: Pennsylvania Coordinate System of 1983
(south zone).

North American Datum of 1927 (NAD 27) is shown by dashed
corner ticks. The values of the shift between NAD 83 and
NAD 27 for 7.5-minute intersections are obtainable from
National Geodetic Survey NADCON software.
There may be private inholdings within the boundaries of the
National or State reservations shown on this map.



CONTOUR INTERVAL 20 FEET
NATIONAL GEODETIC VERTICAL DATUM OF 1929
(TO CONVERT ELEVATIONS TO THE NORTH AMERICAN VERTICAL DATUM OF 1988, SUBTRACT 1 FOOT)
TO CONVERT FROM FEET TO METERS, MULTIPLY BY 0.3048



ROAD CLASSIFICATION
Primary highway
hard surface
Secondary highway
hard surface
Light-duty road, hard or
improved surface
Unimproved road

EAST GREENVILLE, PA
1999

NIMA 5661 I NE-SERIES V831

1	2	3
4	5	6
7	8	

1 Topton
2 Allentown West
3 Allentown East
4 Manassas
5 Millford Square
6 Boyertown
7 Sasamestown
8 Perkiomenville

ADJOINING 7.5' QUADRANGLE NAMES

