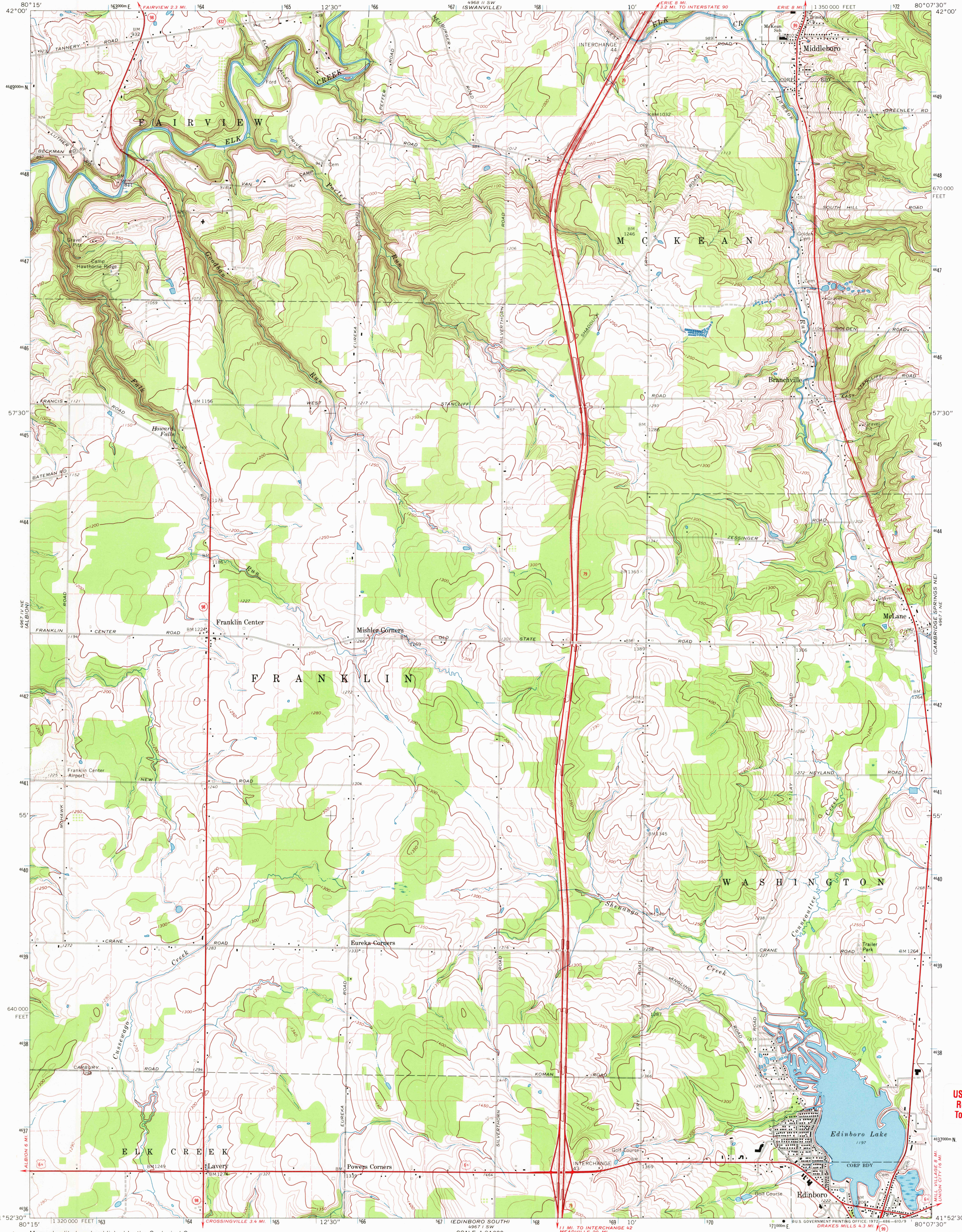


UNITED STATES
DEPARTMENT OF THE INTERIOR
GEOLOGICAL SURVEY

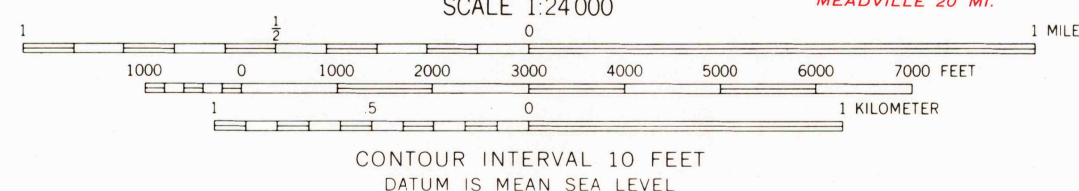
EDINBORO NORTH QUADRANGLE
PENNSYLVANIA-ERIE CO.
7.5 MINUTE SERIES (TOPOGRAPHIC)
NW/4 CAMBRIDGE SPRINGS 15' QUADRANGLE

80°15' E
42°00' S
80°07'30" E
42°00' S



Mapped, edited, and published by the Geological Survey
Control by USGS and USC&GS
Topography by photogrammetric methods from aerial
photographs taken 1964. Field checked 1967
Polyconic projection. 1927 North American datum
10,000-foot grid based on Pennsylvania coordinate system, north zone
1000-meter Universal Transverse Mercator grid ticks, zone 17,
shown in blue
Fine red dashed lines indicate selected fence and field lines where
generally visible on aerial photographs. This information is unchecked

UTM GRID AND 1967 MAGNETIC NORTH
DECLINATION AT CENTER OF SHEET



THIS MAP COMPLIES WITH NATIONAL MAP ACCURACY STANDARDS
FOR SALE BY U.S. GEOLOGICAL SURVEY, WASHINGTON, D.C. 20242
A FOLDER DESCRIBING TOPOGRAPHIC MAPS AND SYMBOLS IS AVAILABLE ON REQUEST

ROAD CLASSIFICATION
Primary highway, hard surface
Secondary highway, hard surface
Unimproved road
Interstate Route
U.S. Route
State Route

EDINBORO NORTH, PA.
NW/4 CAMBRIDGE SPRINGS 15' QUADRANGLE
N4152.5-W8007.5

1967

AMS 4967 1 NW-SERIES V831

USGS Library
Reston, VA.
Topo Archive

USGS
HISTORICAL FILE
TOPOGRAPHIC DIVISION

W-14
2500

FEB 27 1973