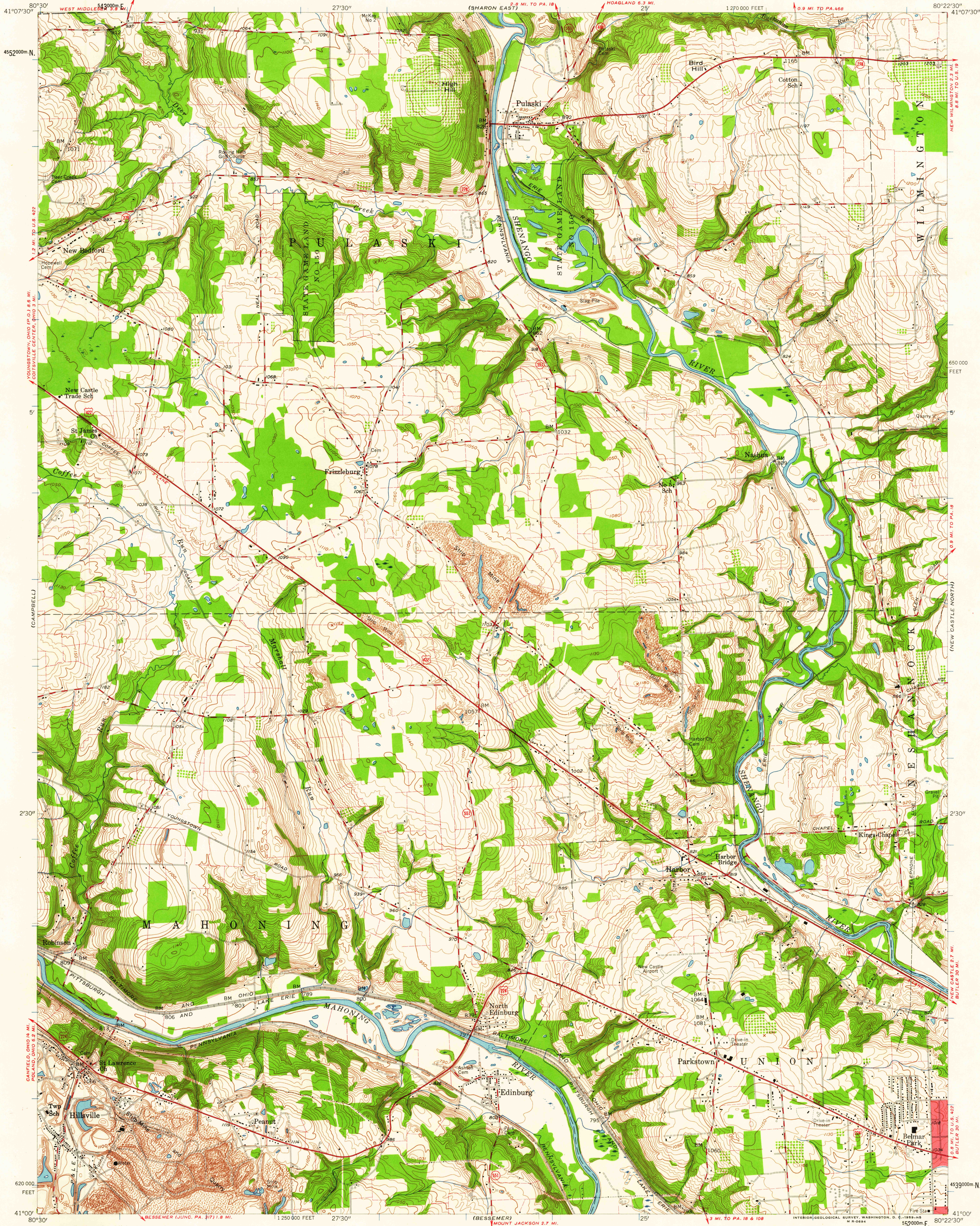


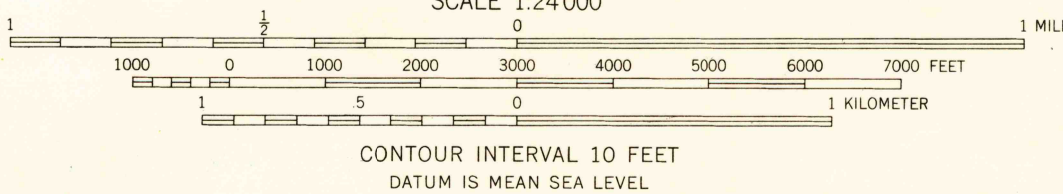
UNITED STATES
DEPARTMENT OF THE INTERIOR
GEOLOGICAL SURVEY

STATE OF PENNSYLVANIA
DEPARTMENT OF INTERNAL AFFAIRS
TOPOGRAPHIC AND GEOLOGIC SURVEY

EDINBURG QUADRANGLE
PENNSYLVANIA—LAWRENCE CO.
7.5 MINUTE SERIES (TOPOGRAPHIC)
SW 1/4 NESHANNOK 15' QUADRANGLE

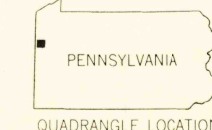


Mapped, edited, and published by the Geological Survey
Control by USGS, USC&GS, and Pennsylvania Geodetic Survey
Topography from aerial photographs by photogrammetric methods
Aerial photographs taken 1955. Field check 1958
Polyconic projection. 1927 North American datum
10,000-foot grid based on Pennsylvania coordinate system,
south zone
1000-meter Universal Transverse Mercator grid ticks,
zone 17, shown in blue
Fine red dashed lines indicate selected fence and field lines
visible on aerial photographs. This information is unchecked
Red tint indicates area in which only landmark buildings are shown
Unchecked elevations are shown in brown



USGS
Historical File
Topographic Division

ROAD CLASSIFICATION
Heavy-duty ——— Light-duty ———
Medium-duty ——— Unimproved dirt ———
U. S. Route ——— State Route ———



EDINBURG, PA.
SW 1/4 NESHANNOK 15' QUADRANGLE
N4100—W8022.5/7.5

1958

U.S.G.S.
FILE COPY
TOPOGRAPHIC DIVISION

NOV - 4 1959
3610