

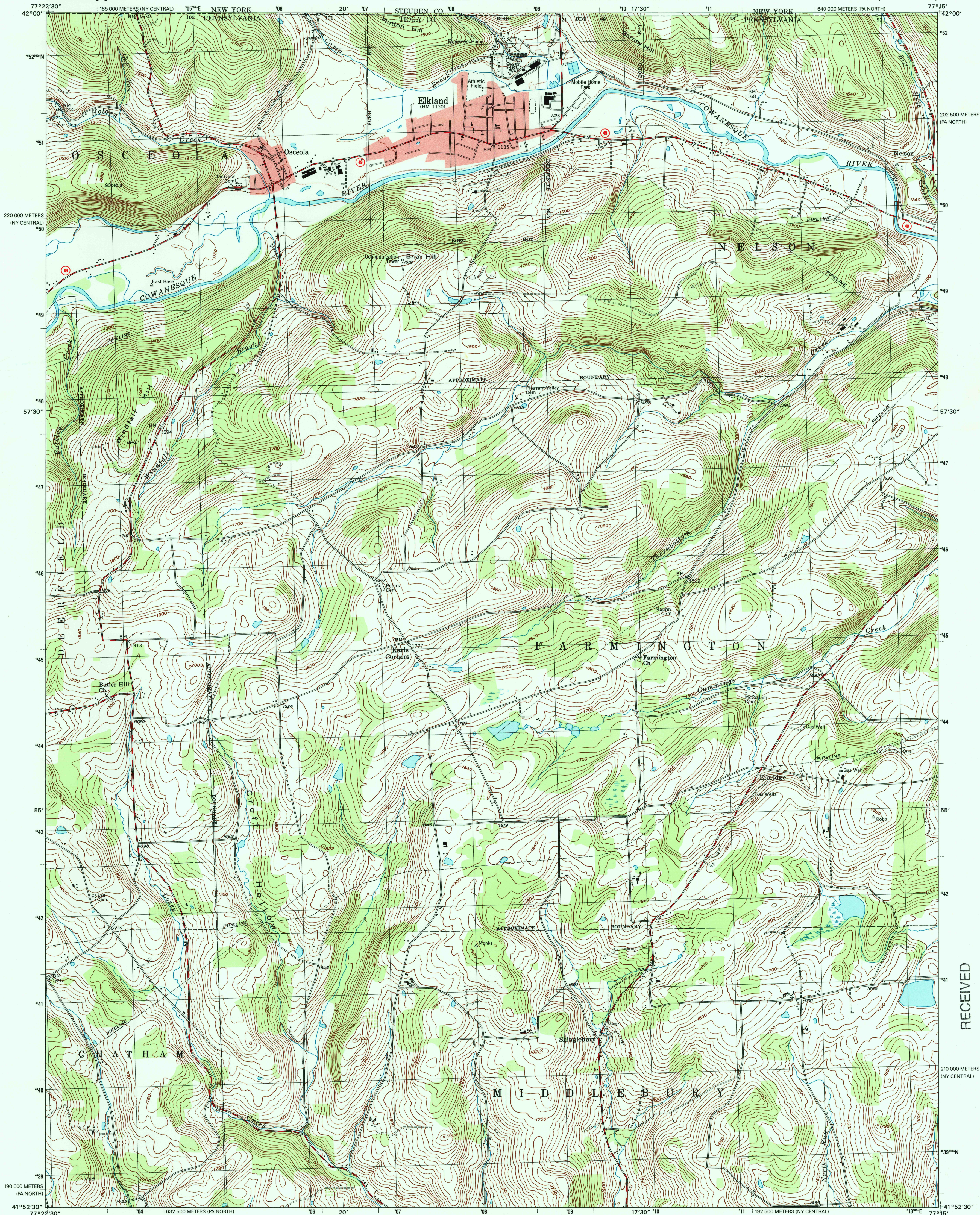


U.S. DEPARTMENT OF THE INTERIOR
U.S. GEOLOGICAL SURVEY



COMMONWEALTH OF PENNSYLVANIA
DEPARTMENT OF CONSERVATION AND NATURAL RESOURCES
BUREAU OF TOPOGRAPHIC AND GEOLOGIC SURVEY

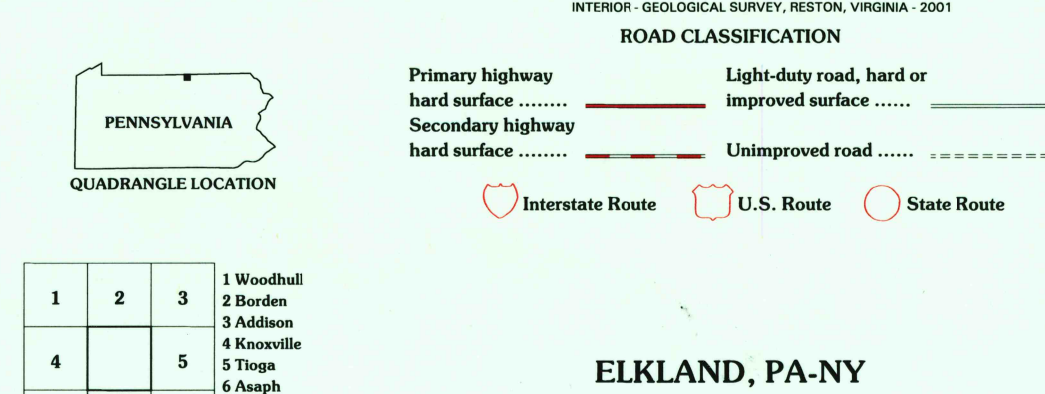
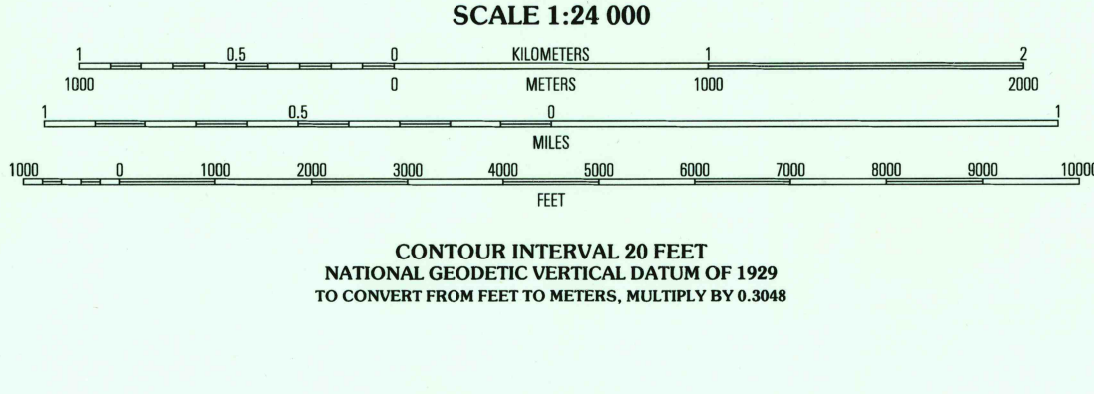
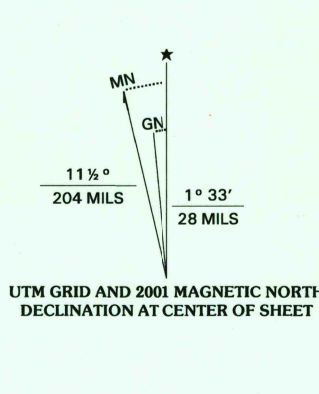
ELKLAND QUADRANGLE
PENNSYLVANIA-NEW YORK
7.5-MINUTE SERIES (TOPOGRAPHIC)



RECEIVED
JUL 31 2001

USGS NWU
HISTORICAL MAP ARCHIVES

Produced by the United States Geological Survey
in cooperation with Pennsylvania Department of
Conservation and Natural Resources, Bureau of
Topographic and Geologic Survey
Topography compiled 1999. Planimetry derived from imagery
taken 1999 and other sources. Survey control current as of 1954
Boundaries current as of 2001
North American Datum of 1983 (NAD 83). Projection and
1 000-meter grid: Universal Transverse Mercator, zone 18
2 500-meter ticks: Pennsylvania Coordinate System of 1983
(north zone) and New York Coordinate System of 1983
(central zone)
North American Datum of 1927 (NAD 27) is shown by dashed
corner ticks. The values of the shift between NAD 83 and
NAD 27 for 7.5-minute intersections are obtainable from
National Geodetic Survey NADCON software
Houses of worship, schools, and other labeled buildings verified 1954



1	2	3
4	5	6
7	8	9

ELKLAND, PA-NY
1999

NIMA 5567 IV NE-SERIES V831

