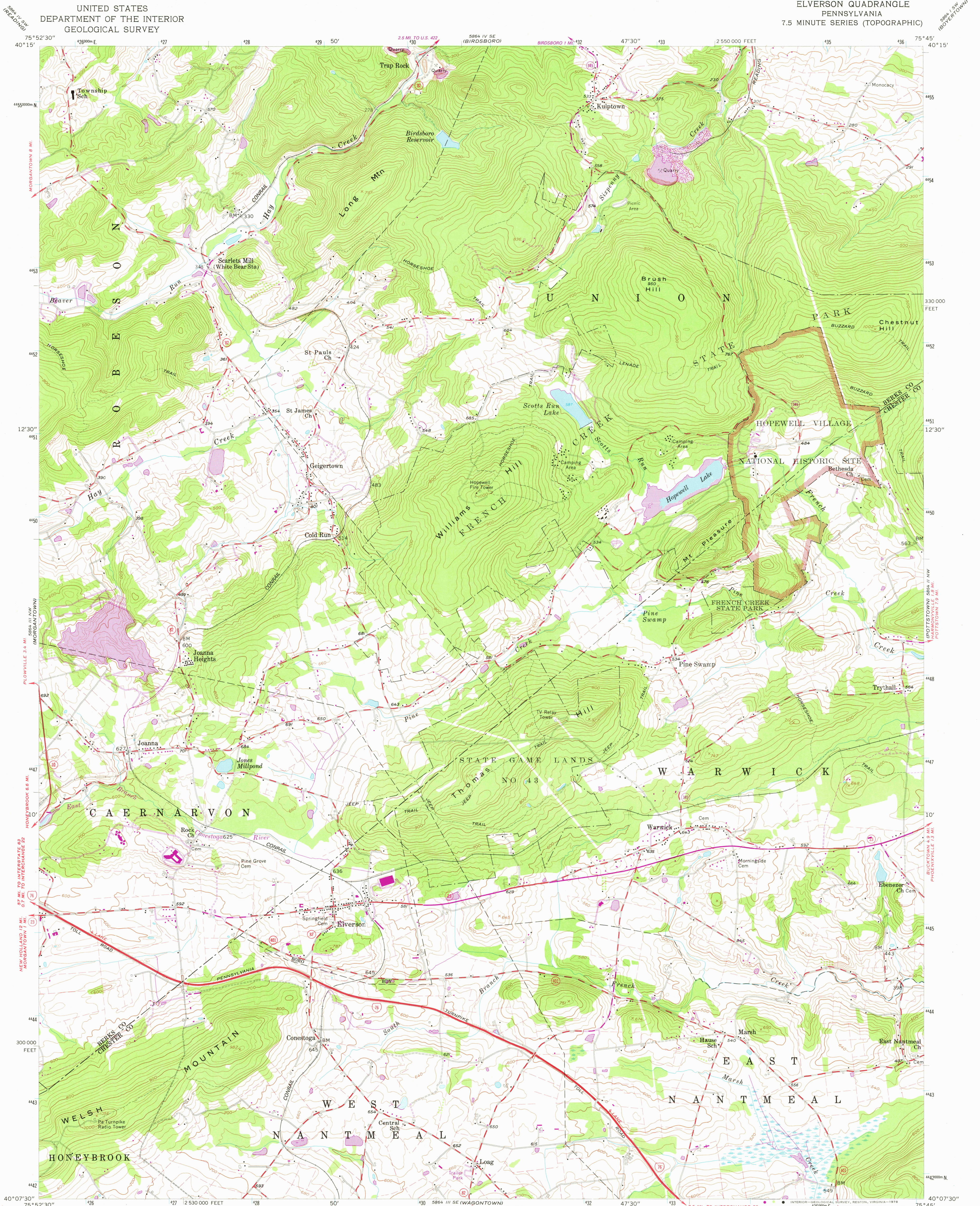
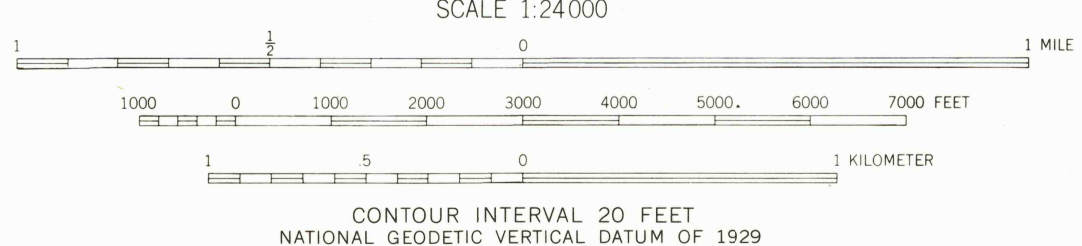
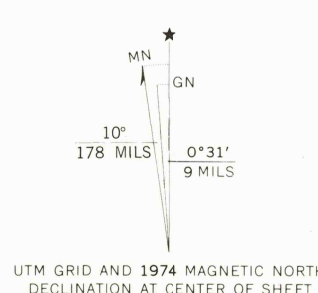


UNITED STATES  
DEPARTMENT OF THE INTERIOR  
GEOLOGICAL SURVEY

ELVERSON QUADRANGLE  
PENNSYLVANIA  
7.5 MINUTE SERIES (TOPOGRAPHIC)



Mapped, edited, and published by the Geological Survey  
Control by USGS, USC&GS, and USSCS  
Topography from aerial photographs by stereoplanigraph  
Aerial photographs taken 1951. Field check 1956  
Polyconic projection, 1927 North American datum  
10,000-foot grid based on Pennsylvania coordinate system,  
south zone. 1000-meter Universal Transverse Mercator  
grid ticks, zone 18, shown in blue  
Unchecked elevations are shown in brown  
Fine red dashed lines indicate selected fence and field lines  
visible on aerial photographs. This information is unchecked  
Revisions shown in purple compiled in cooperation with State of  
Pennsylvania agencies from aerial photographs taken 1969 and 1974.  
This information not field checked



ROAD CLASSIFICATION  
Heavy-duty ——— Light-duty ———  
Medium-duty ——— Unimproved dirt ———  
Interstate Route ——— U.S. Route ——— State Route ———

USGS  
Historical File  
Topographic Division

ELVERSON, PA.  
N4007.5—W7545/7.5

1956  
PHOTOREVISED 1969 AND 1974  
AMS 5864 III NE—SERIES V851

THIS MAP COMPLIES WITH NATIONAL MAP ACCURACY STANDARDS  
FOR SALE BY U. S. GEOLOGICAL SURVEY, RESTON, VIRGINIA 22092  
A FOLDER DESCRIBING TOPOGRAPHIC MAPS AND SYMBOLS IS AVAILABLE ON REQUEST

MAY 19 1978

4150