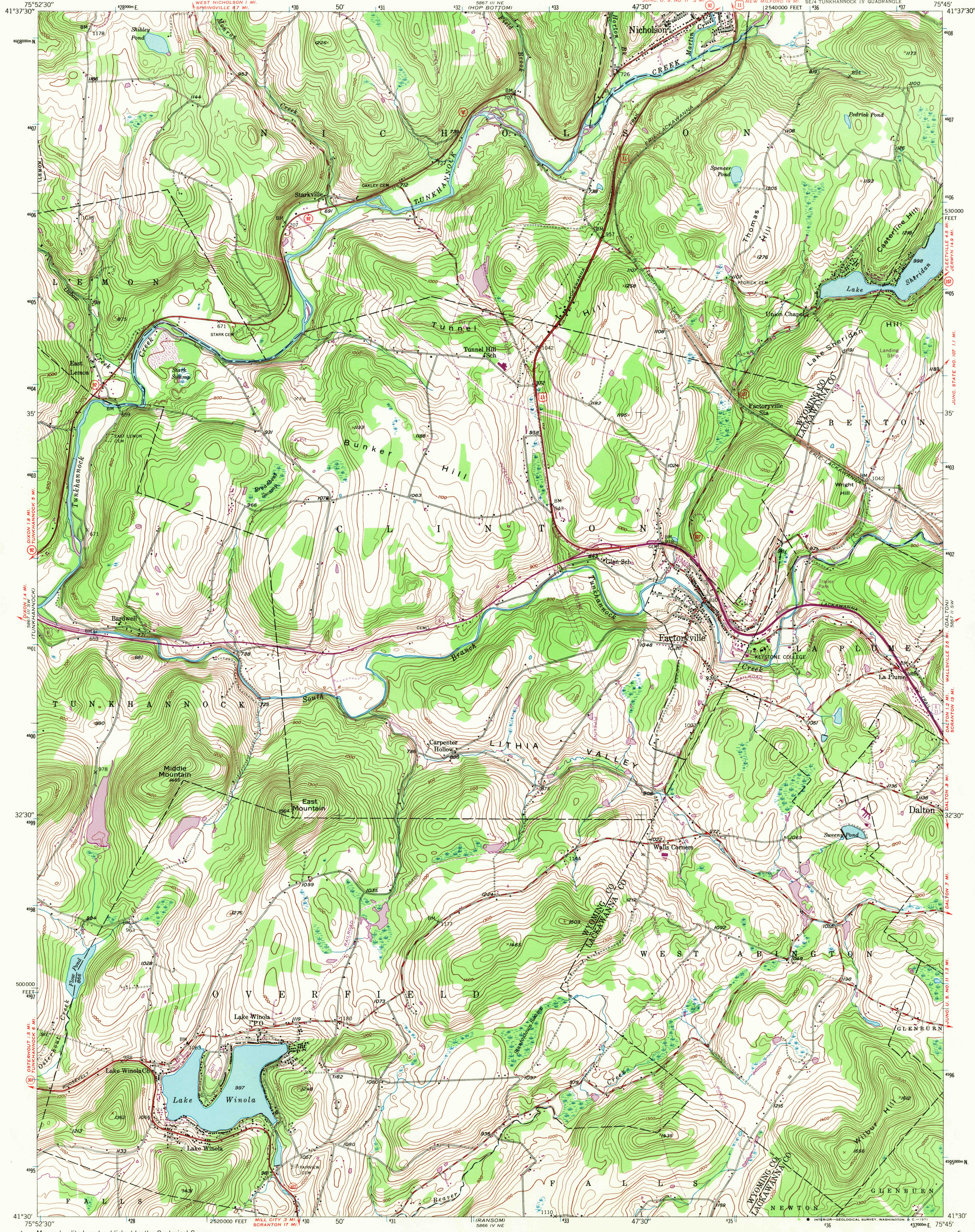


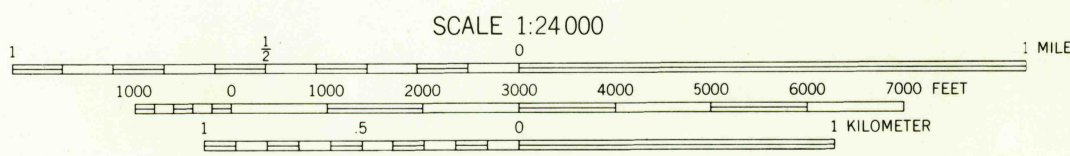
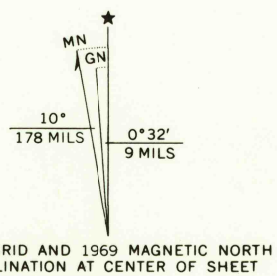
UNITED STATES
DEPARTMENT OF THE INTERIOR
GEOLOGICAL SURVEY

FACTORYVILLE QUADRANGLE
PENNSYLVANIA
7.5 MINUTE SERIES (TOPOGRAPHIC)



Mapped, edited, and published by the Geological Survey
Control by USGS

Topography from aerial photographs by multiplex methods
and by plane-table surveys
Aerial photographs taken 1942. Field check 1946
Polyconic projection. 1927 North American datum
10000 foot grid based on Pennsylvania coordinate
system, North zone
1000-meter Universal Transverse Mercator grid ticks,
zone 18, shown in blue
Revisions shown in purple compiled in cooperation with
State of Pennsylvania agencies from aerial photographs taken 1969
This information not field checked



CONTOUR INTERVAL 20 FEET
DATUM IS MEAN SEA LEVEL

THIS MAP COMPLIES WITH NATIONAL MAP ACCURACY STANDARDS
FOR SALE BY U.S. GEOLOGICAL SURVEY, WASHINGTON, D.C. 20242
A FOLDER DESCRIBING TOPOGRAPHIC MAPS AND SYMBOLS IS AVAILABLE ON REQUEST



ROAD CLASSIFICATION
Heavy-duty ——— Light-duty ———
Medium-duty ——— Unimproved dirt ———
U.S. Route ——— State Route ———

FACTORYVILLE, PA.
SE/4 TUNKHANNOCK 15' QUADRANGLE
N4130—W7545/7.5

1946
PHOTOREVISED 1969
AMS 5867 III SE—SERIES V831

FILE COPY
TOPOGRAPHIC DIVISION