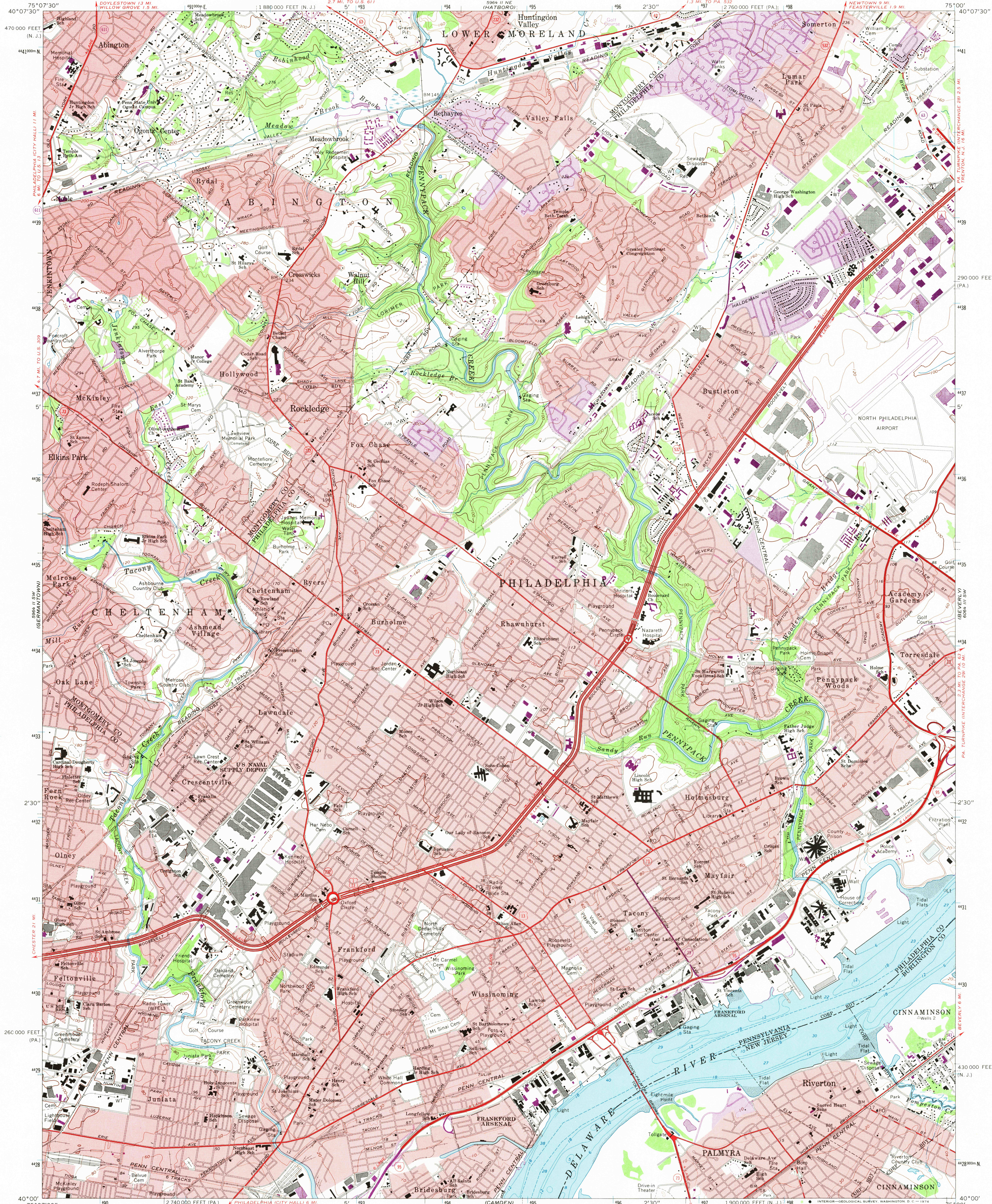
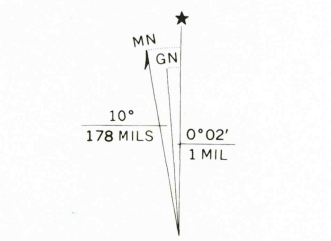


UNITED STATES
DEPARTMENT OF THE INTERIOR
GEOLOGICAL SURVEY

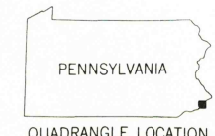
FRANKFORD QUADRANGLE
PENNSYLVANIA-NEW JERSEY
7.5 MINUTE SERIES (TOPOGRAPHIC)



Mapped by the U.S. Coast & Geodetic Survey
Edited and published by the Geological Survey
Control by USGS, USC&GS, USCE, and
New Jersey Geodetic Control Survey
Planimetry by photogrammetric methods from aerial photographs
taken 1946 and 1950. Topography by planetable surveys 1947
Revised by the Geological Survey from aerial photographs taken 1955
Field checked 1967
Selected hydrographic data compiled from USC&GS Chart 296 (1966)
This information is not intended for navigational purposes
Polyconic projection. 1927 North American datum
10,000-foot grids based on Pennsylvania coordinate system,
south zone, and New Jersey coordinate system
1000-meter Universal Transverse Mercator grid ticks,
zone 18, shown in blue
Red tint indicates areas in which only landmark buildings are shown



SCALE 1:24,000
CONTOUR INTERVAL 20 FEET
DOTTED LINES REPRESENT 10-FOOT CONTOURS
DATUM IS MEAN SEA LEVEL
DEPTH CURVES AND SOUNDINGS IN FEET—DATUM IS MEAN LOW WATER
SHORELINE SHOWN REPRESENTS THE APPROXIMATE LINE OF MEAN HIGH WATER
THE MEAN RANGE OF TIDE IS APPROXIMATELY 6 FEET
THIS MAP COMPLIES WITH NATIONAL MAP ACCURACY STANDARDS
FOR SALE BY U.S. GEOLOGICAL SURVEY, WASHINGTON, D.C. 20242
A FOLDER DESCRIBING TOPOGRAPHIC MAPS AND SYMBOLS IS AVAILABLE ON REQUEST



ROAD CLASSIFICATION
Heavy-duty ————— Light-duty —————
Medium-duty ————— Unimproved dirt —————
Interstate Route U.S. Route State Route

FRANKFORD, PA. - N. J.
N4000-W7500/7.5
1967
PHOTO-REVISED 1973
AMS 5964 II SE-SERIES V831

JAN 23 1974