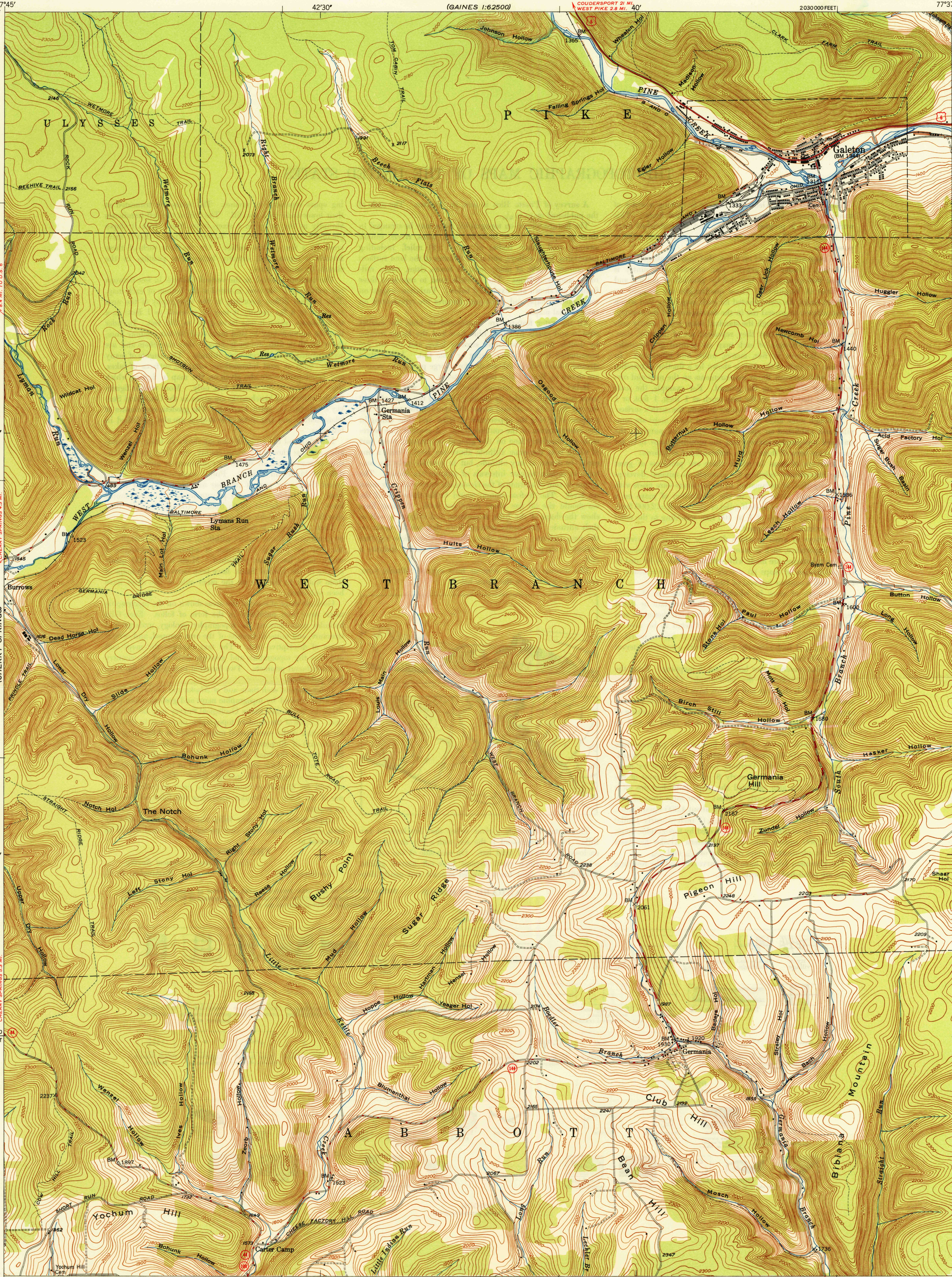


(GAINES 1:62500)

2030 000 FEET

(GAINES)
1:62500

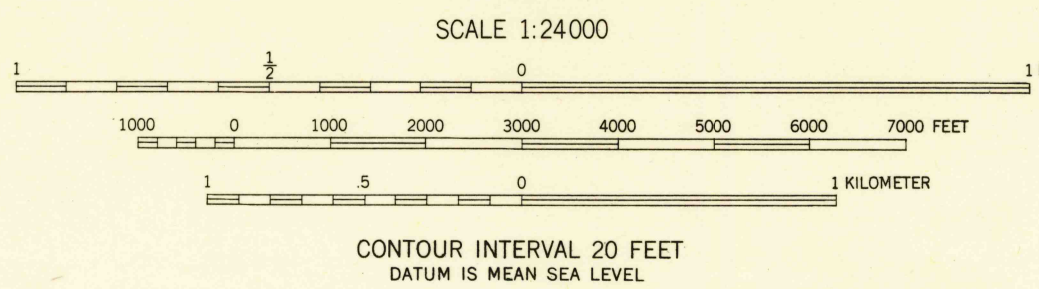


U.S.G.S.
FILE COPY
Inspection and Editing

U.S.G.S.
FILE COPY
Inspection and Editing

Mapped, edited, and published by the Geological Survey
Control by USGS and USC&GS
Topography from aerial photographs by multiplex methods
Aerial photographs taken 1945. Field check 1947
Polyconic projection. 1927 North American datum
10,000-foot grid based on Pennsylvania coordinate system,
north zone

TRUE NORTH
MAGNETIC NORTH
APPROXIMATE MEAN
DECLINATION, 1947



USGS
Historical File
Topographic Division

ROAD CLASSIFICATION
HARD-SURFACE ALL WEATHER ROADS DRY WEATHER ROADS
Heavy-duty... 4 LANE LANE Improved dirt...
Medium-duty... 4 LANE LANE Unimproved dirt...
Loose-surface, graded, or narrow hard-surface...
U. S. Route
State Route

U.S.G.S.
FILE COPY
Inspection and Editing

GALETON, PA.
N4137.5-W7737.5/7.5

EDITION OF 1949 JUL 6 1949

THIS MAP COMPLIES WITH NATIONAL MAP ACCURACY STANDARDS
FOR SALE BY U. S. GEOLOGICAL SURVEY, WASHINGTON 25, D. C.

3200