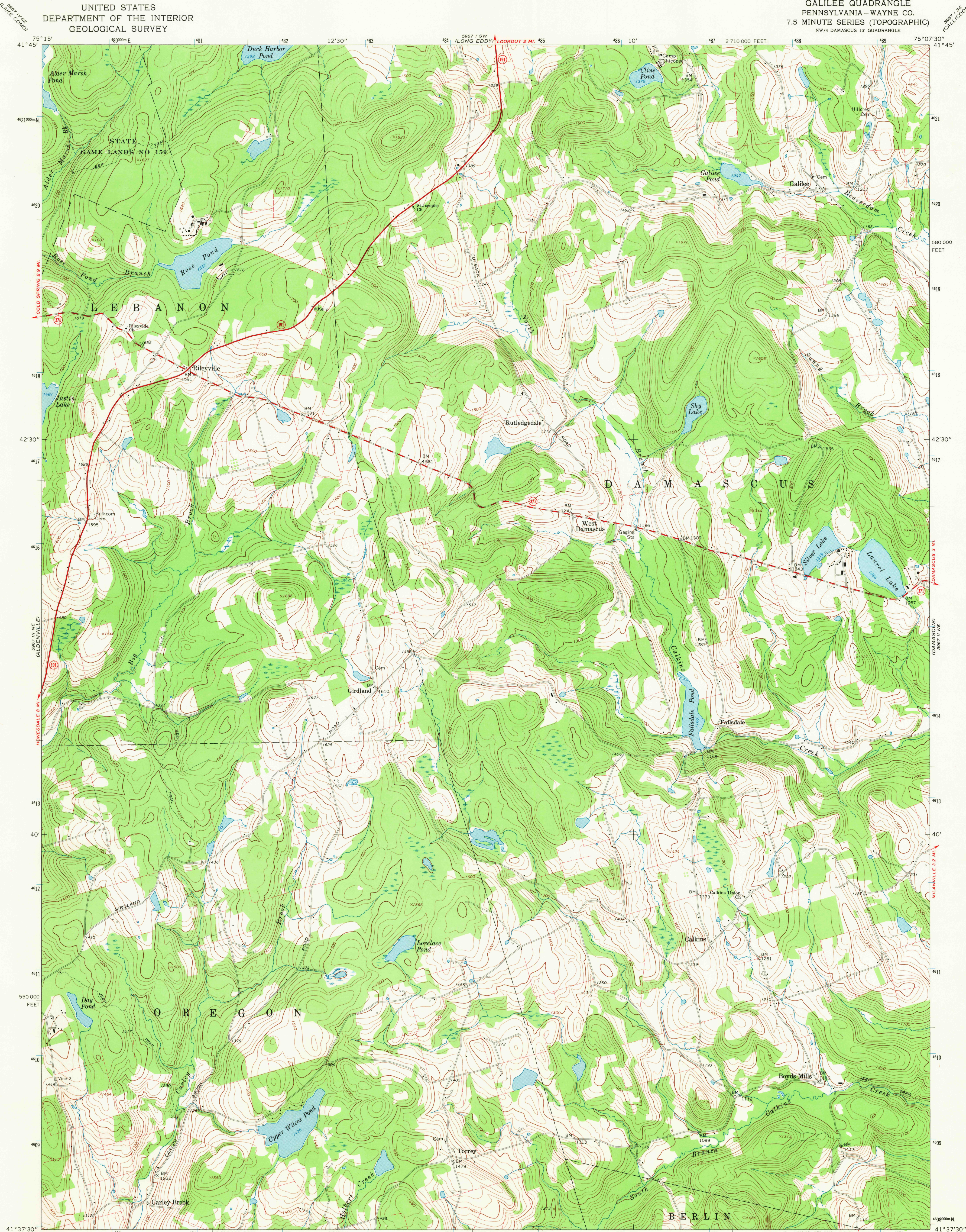


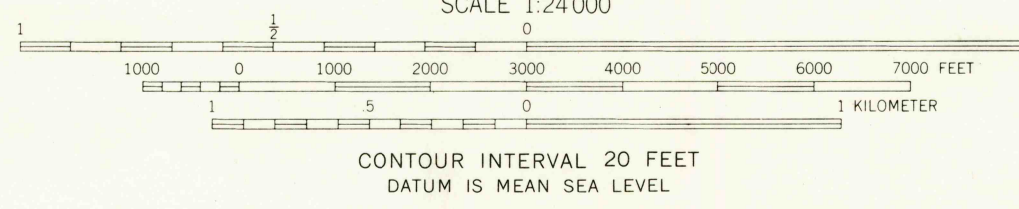
UNITED STATES  
DEPARTMENT OF THE INTERIOR  
GEOLOGICAL SURVEY

GALILEE QUADRANGLE  
PENNSYLVANIA—WAYNE CO.  
7.5 MINUTE SERIES (TOPOGRAPHIC)  
NW/4 DAMASCUS 15' QUADRANGLE



Mapped, edited, and published by the Geological Survey  
Control by USGS and USC&GS  
Topography by photogrammetric methods from aerial  
photographs taken 1965 and 1966. Field checked 1967  
Polyconic projection. 1927 North American datum  
10,000-foot grid based on Pennsylvania coordinate system, north zone  
1000-meter Universal Transverse Mercator grid ticks,  
zone 18, shown in blue  
Fine red dashed lines indicate selected fence and field lines where  
generally visible on aerial photographs. This information is unchecked

UTM GRID AND 1967 MAGNETIC NORTH  
DECLINATION AT CENTER OF SHEET



THIS MAP COMPLIES WITH NATIONAL MAP ACCURACY STANDARDS  
FOR SALE BY U.S. GEOLOGICAL SURVEY, WASHINGTON, D.C. 20242  
A FOLDER DESCRIBING TOPOGRAPHIC MAPS AND SYMBOLS IS AVAILABLE ON REQUEST

USGS  
Historical  
Topographic Division

PENNSYLVANIA  
QUADRANGLE  
FILE COPY  
TOPOGRAPHIC DIVISION

ROAD CLASSIFICATION  
Primary highway, all weather, hard surface  
Secondary highway, all weather, hard surface  
Light-duty road, all weather, improved surface  
Unimproved road, fair or dry weather  
State Route

GALILEE, PA.  
NW/4 DAMASCUS 15' QUADRANGLE  
N4137.5—W7507.5/7.5

1967  
AMS 5967 II NW—SERIES V831

3000  
JUN 8 1970