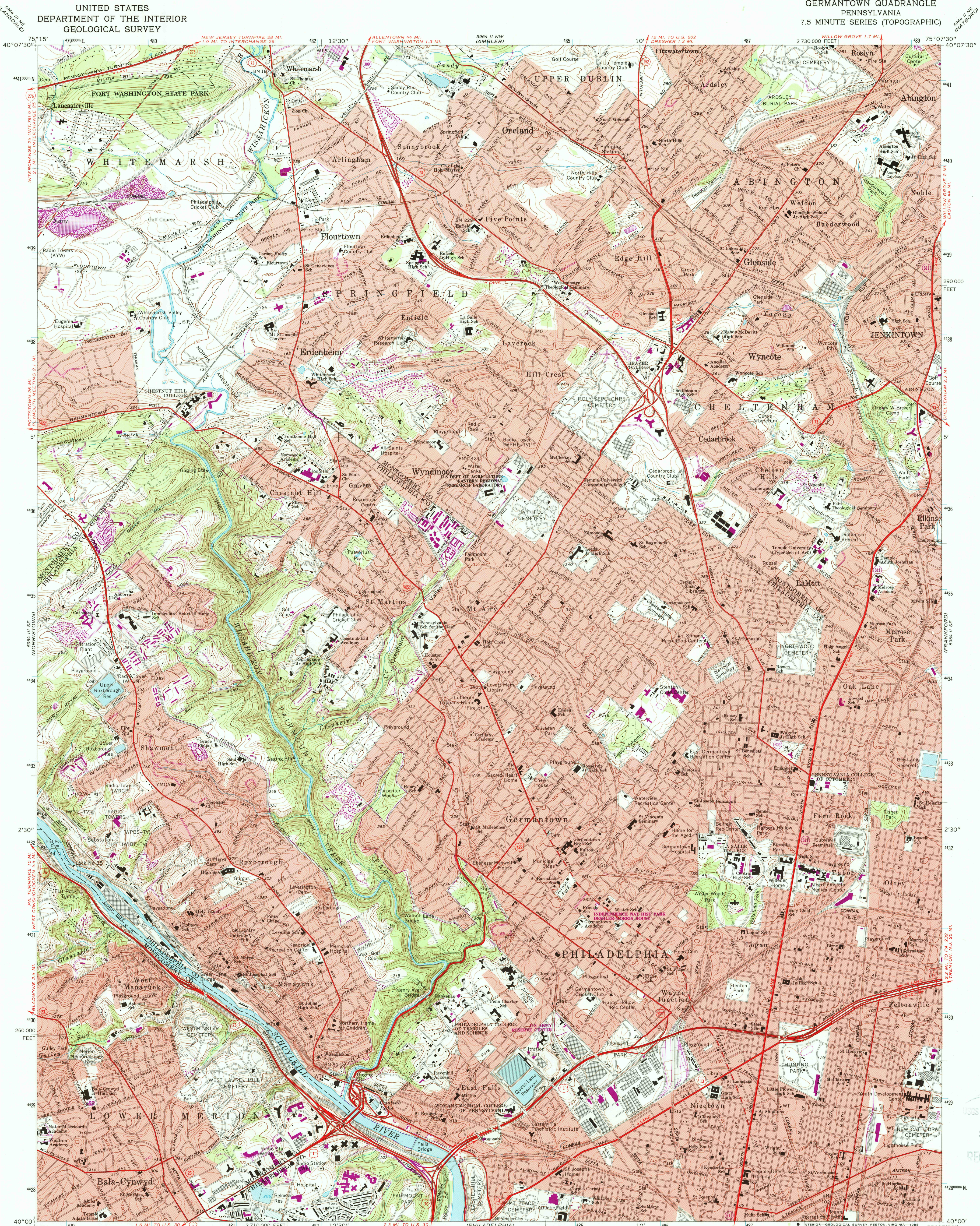


UNITED STATES
DEPARTMENT OF THE INTERIOR
GEOLOGICAL SURVEY

GERMANTOWN QUADRANGLE
PENNSYLVANIA
7.5 MINUTE SERIES (TOPOGRAPHIC)



Mapped, edited, and published by the Geological Survey
in cooperation with Pennsylvania Department of Interior Affairs,
Topographic and Geologic Survey
Control by USGS, NOS/NOAA, and USCE

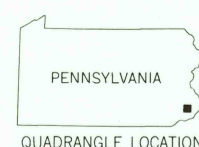
Topography by photogrammetric methods from aerial photographs
taken 1950. Field checked 1952. Revised from aerial
photographs taken 1965. Field checked 1967.
Polyconic projection. 10,000-foot grid ticks based on
Pennsylvania coordinate system, south zone.
1000-meter Universal Transverse Mercator grid ticks, zone 18, shown in blue
1927 North American Datum.
To place on the predicted North American Datum 1983
move the projection lines 6 meters south and 31 meters
west as shown by dashed corner ticks.
Red tint indicates areas in which only landmark buildings are shown.
There may be private inholdings within the boundaries of
the National or State reservations shown on this map.

UTM GRID AND 1983 MAGNETIC NORTH
DECLINATION AT CENTER OF SHEET

SCALE 1:24,000
1 0 1000 2000 3000 4000 5000 6000 7000 FEET
1 0 1 2 3 4 5 6 7 8 9 10 KILOMETER
CONTOUR INTERVAL 10 FEET
NATIONAL GEODETIC VERTICAL DATUM OF 1929

THIS MAP COMPLIES WITH NATIONAL MAP ACCURACY STANDARDS
FOR SALE BY U.S. GEOLOGICAL SURVEY
DENVER, COLORADO 80225, OR RESTON, VIRGINIA 22092
A FOLDER DESCRIBING TOPOGRAPHIC MAPS AND SYMBOLS IS AVAILABLE ON REQUEST

Revisions shown in purple and woodland compiled from
aerial photographs taken 1981 and other sources
This information not field checked. Map edited 1983



ROAD CLASSIFICATION
Heavy-duty ——— Light-duty ———
Medium-duty ——— Unimproved dirt ———
Interstate Route U.S. Route State Route

GERMANTOWN, PA.
40075-A2-TF-024

1967
PHOTOREVISED 1983
DMA 5964 II SW-SERIES V831

USGS HISTORICAL MAP
SEP 14 1968
REC'D FILE COPY