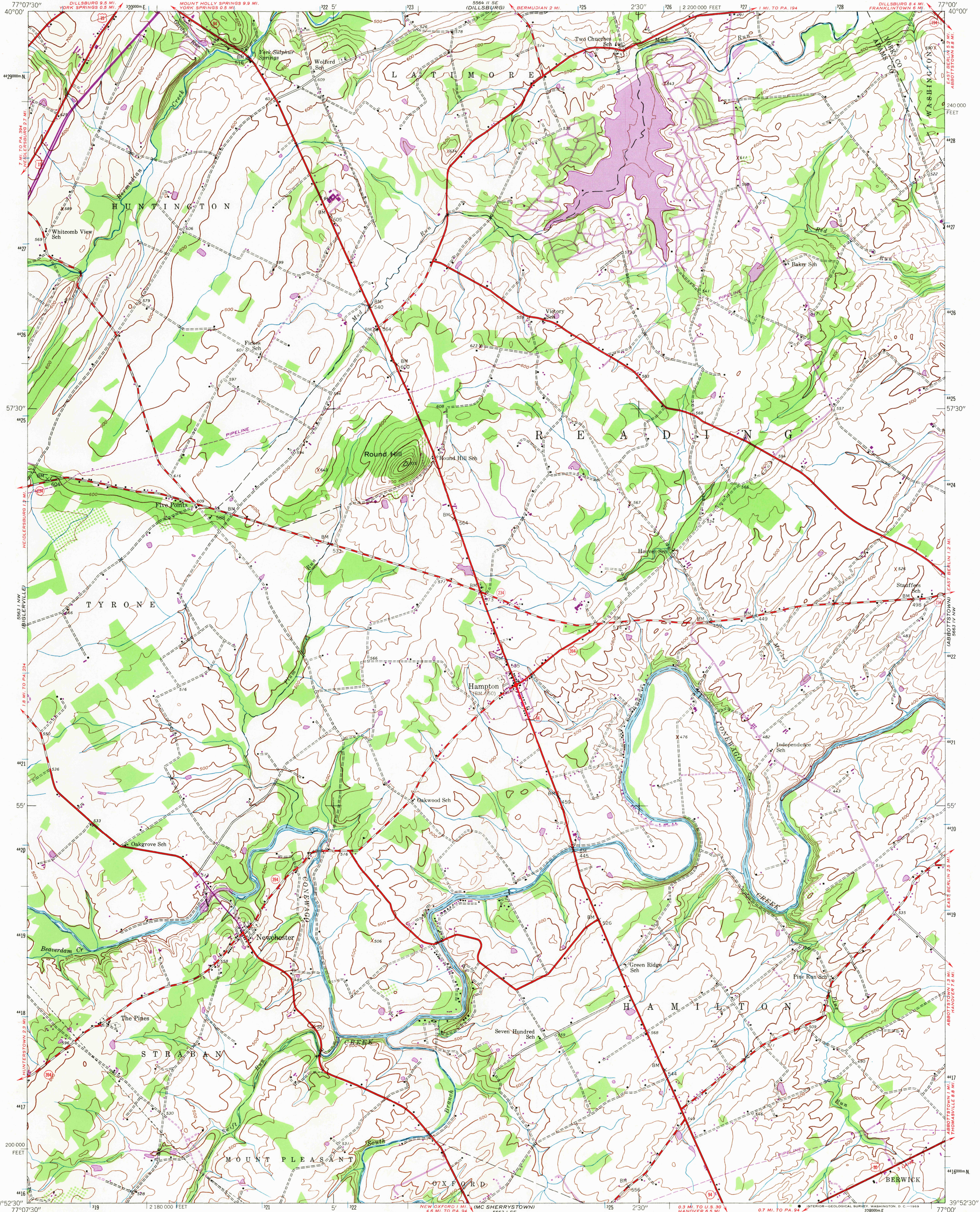
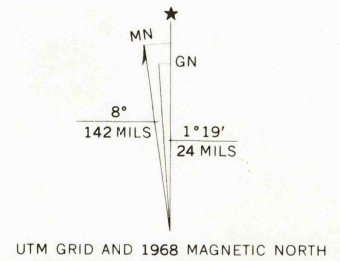


UNITED STATES  
DEPARTMENT OF THE INTERIOR  
GEOLOGICAL SURVEY

HAMPTON QUADRANGLE  
PENNSYLVANIA  
7.5 MINUTE SERIES (TOPOGRAPHIC)  
NE/4 GETTYSBURG 15' QUADRANGLE

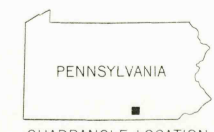


Mapped by the Army Map Service  
Published for civil use by the Geological Survey  
Control by USGS, USC&GS, and USFS  
Topography from aerial photographs by photogrammetric methods  
Aerial photographs taken 1943. Field check 1944  
Polyconic projection. 1927 North American datum  
10,000-foot grid based on Pennsylvania coordinate system, south zone  
1000-meter Universal Transverse Mercator grid ticks,  
zone 18, shown in blue  
Revisions shown in purple compiled by Geological Survey in  
cooperation with State of Pennsylvania agencies, from aerial  
photographs taken 1968. This information not field checked



THIS MAP COMPLIES WITH NATIONAL MAP ACCURACY STANDARDS  
FOR SALE BY U.S. GEOLOGICAL SURVEY, WASHINGTON, D.C. 20242  
A FOLDER DESCRIBING TOPOGRAPHIC MAPS AND SYMBOLS IS AVAILABLE ON REQUEST

USGS  
Historical File  
Topographic Division



U.S.G.S.  
FIVE COPY  
TOPOGRAPHIC DIVISION

ROAD CLASSIFICATION  
Heavy duty ——— Light duty ———  
Medium duty ——— Unimproved dirt ———  
U.S. Route ——— State Route ———

HAMPTON, PA.  
NE/4 GETTYSBURG 15' QUADRANGLE  
N3952.5-W7700/7.5  
1944  
PHOTOREVISED 1968  
AMS 5563 1 NE-SERIES V831

2525  
JUN 17 1969