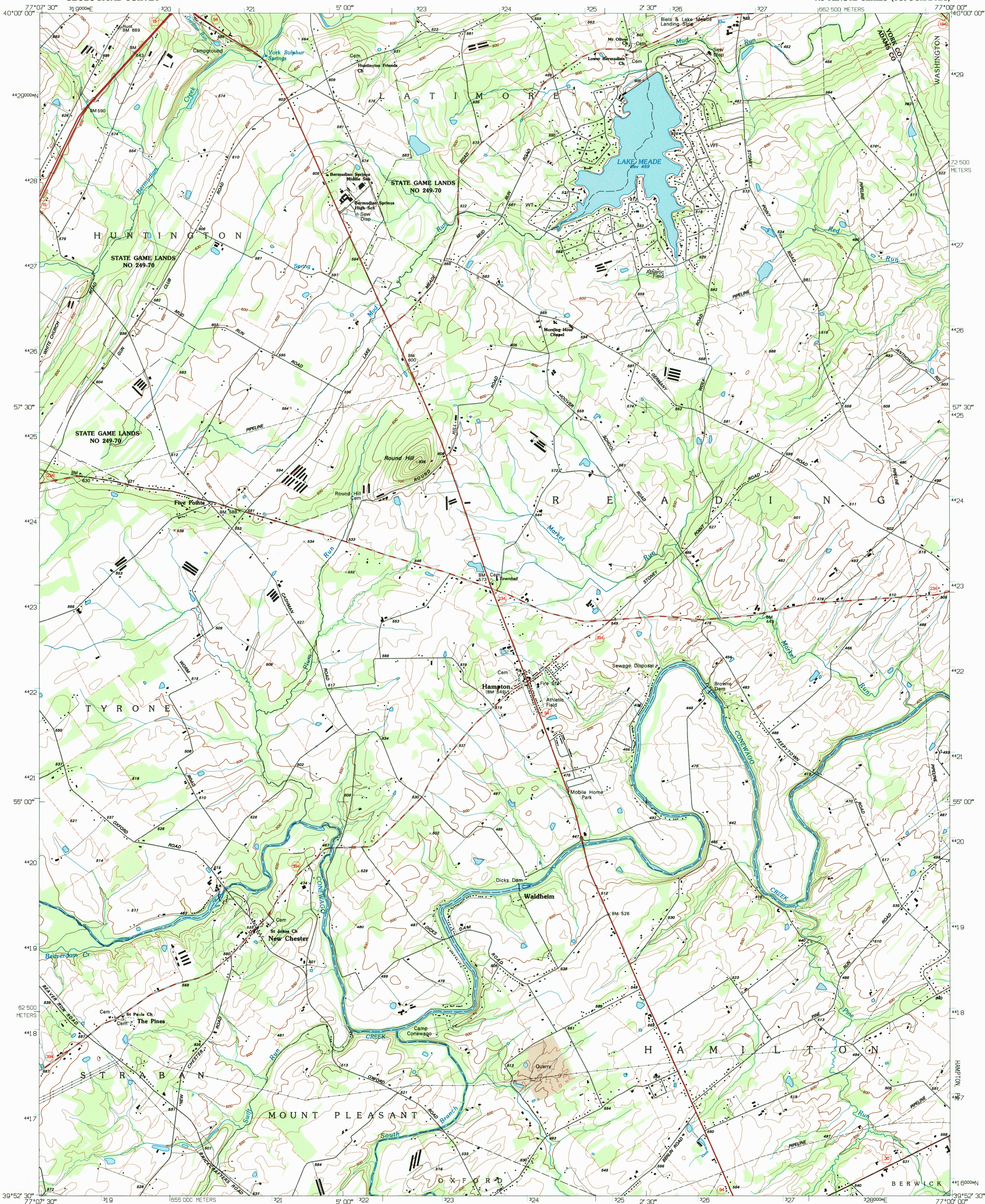
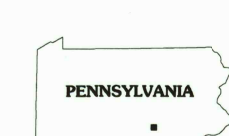
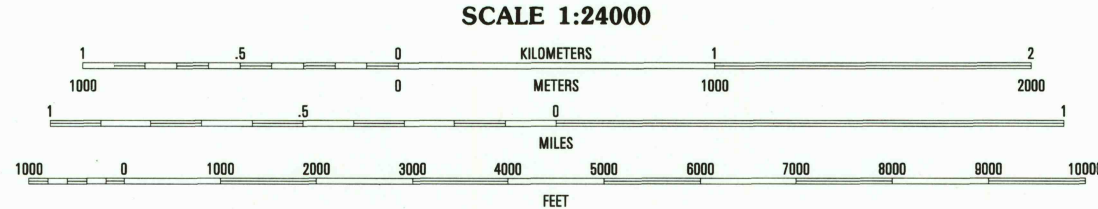
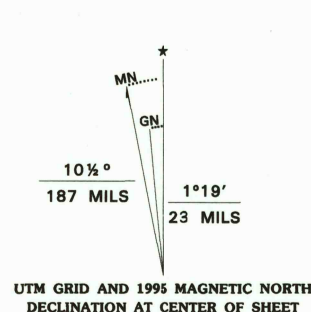


UNITED STATES  
DEPARTMENT OF THE INTERIOR  
GEOLOGICAL SURVEY

HAMPTON QUADRANGLE  
PENNSYLVANIA  
7.5 MINUTE SERIES (TOPOGRAPHIC)



Produced by the United States Geological Survey  
Compiled from imagery dated 1988 and other sources  
Field checked 1990. Map edited 1995  
North American Datum of 1983 (NAD 83). Projection and  
blue 1000-meter ticks: Universal Transverse Mercator, zone 18  
2 500-meter ticks: Pennsylvania Coordinate System of 1983 (south zone)  
North American Datum of 1927 (NAD 27) is shown by dashed  
corner ticks. The values of the shift between NAD 83 and NAD 27  
for 7.5-minute intersections are obtainable from National Geodetic  
Survey NADCON software.  
There may be private inholdings within the boundaries of  
the National or State reservations shown on this map.



QUADRANGLE LOCATION		
1	2	3
4	5	6
7	8	9

1 Mount Holly Springs  
2 Dillsburg  
3 Wellsville  
4 Biglerville  
5 Abbotstown  
6 Gettysburg  
7 McSherrytown  
8 Hanover

ADJOINING 7.5' QUADRANGLE NAMES

ROAD CLASSIFICATION  
Primary highway ..... Light-duty road, hard or  
hard surface ..... Improved surface .....  
Secondary highway ..... Unimproved road .....  
hard surface .....  
Interstate Route U.S. Route State Route



HAMPTON, PA  
39077-H1-TF-024

1990

DMA 5563 1 NE - SERIES V831

