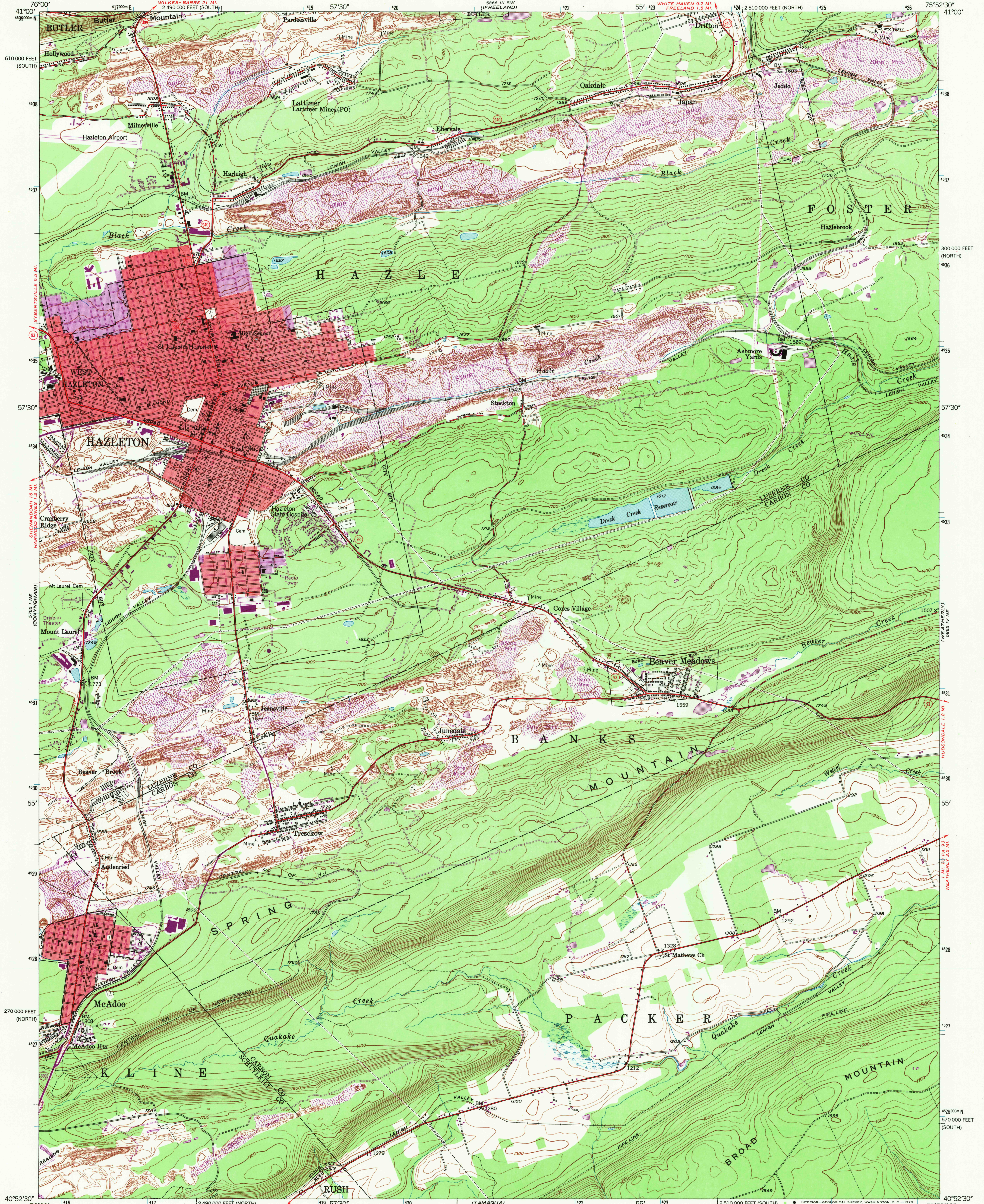


UNITED STATES  
DEPARTMENT OF THE INTERIOR  
GEOLOGICAL SURVEY

HAZLETON QUADRANGLE  
PENNSYLVANIA  
7.5 MINUTE SERIES (TOPOGRAPHIC)  
NW 1/4 HAZLETON 15' QUADRANGLE



Mapped, edited, and published by the Geological Survey

Control by USGS, USC&GS, and  
Pennsylvania Department of Highways

Topography by photogrammetric methods from aerial photographs  
taken 1942. Field checked 1947

Polyconic projection. 1927 North American datum  
10,000-foot grids based on Pennsylvania coordinate system,  
north and south zones

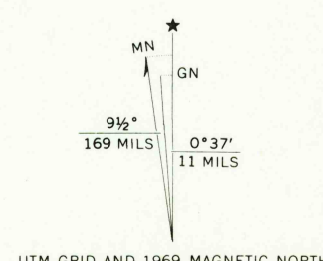
1000-meter Universal Transverse Mercator grid ticks, zone 18,  
shown in blue

Red tint indicates areas in which only landmark buildings are shown

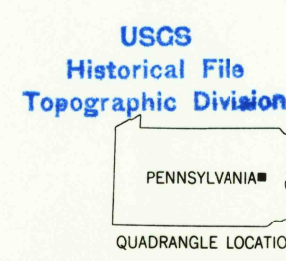
Revisions shown in purple compiled in cooperation with  
State of Pennsylvania agencies from aerial photographs taken 1969

This information not field checked

Purple tint indicates extension of urban areas



THIS MAP COMPLIES WITH NATIONAL MAP ACCURACY STANDARDS  
FOR SALE BY U.S. GEOLOGICAL SURVEY, WASHINGTON, D. C. 20242  
A FOLDER DESCRIBING TOPOGRAPHIC MAPS AND SYMBOLS IS AVAILABLE ON REQUEST



ROAD CLASSIFICATION  
Heavy-duty ——— Light-duty ———  
Medium-duty ——— Unimproved dirt ———  
○ State Route

U.S.G.S.  
FILE COPY  
TOPOGRAPHIC DIVISION

HAZLETON, PA.  
NW 1/4 HAZLETON 15' QUADRANGLE  
N4052.5-W7552.5/7.5  
1947  
AMS 5865 IV NW-SERIES V831

MAR 12 1970