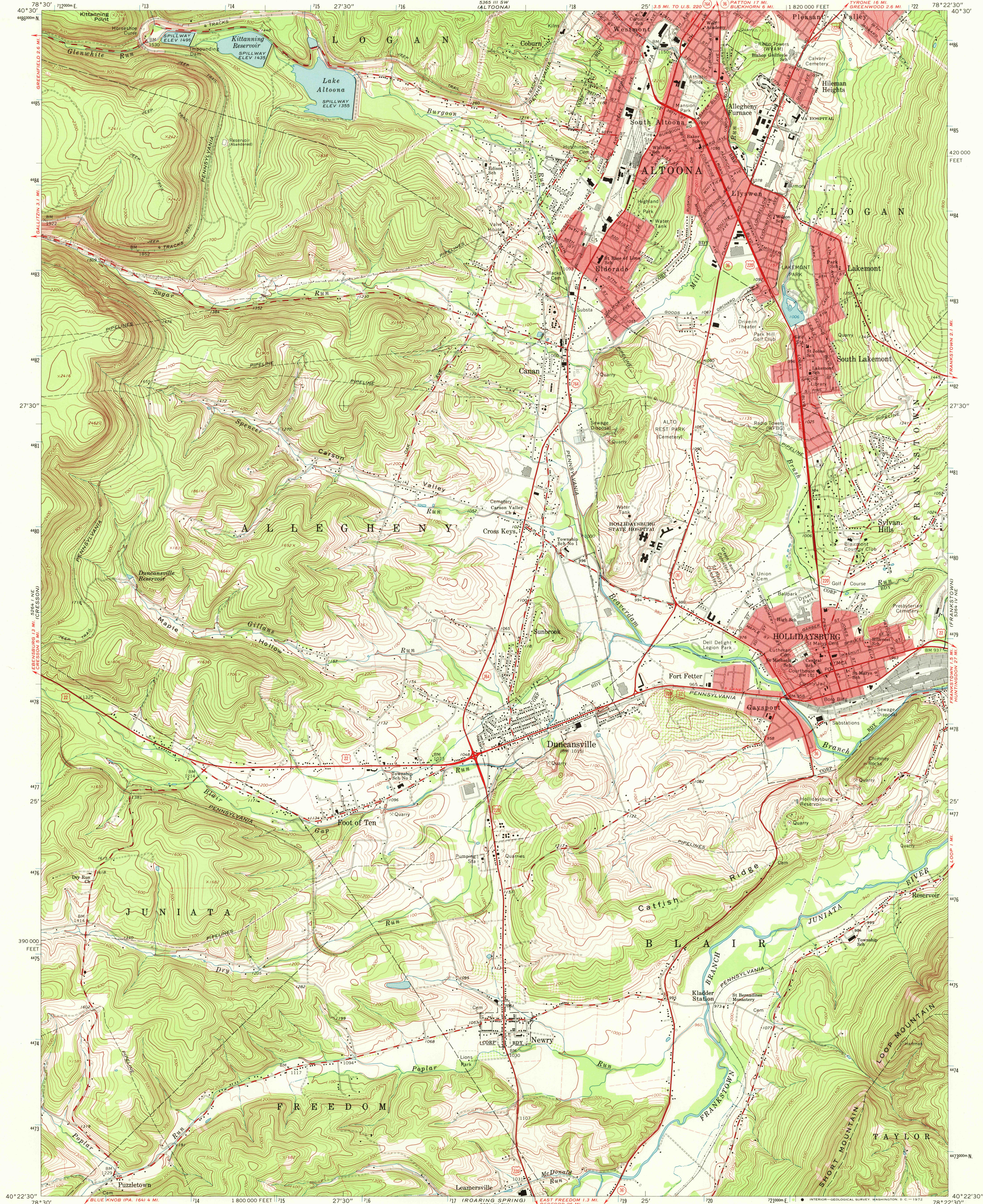


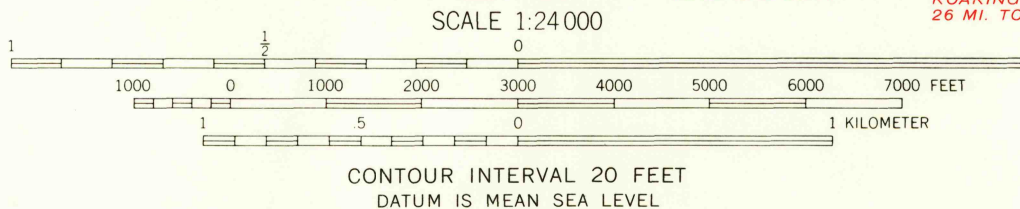
UNITED STATES
DEPARTMENT OF THE INTERIOR
GEOLOGICAL SURVEY

STATE OF PENNSYLVANIA
DEPARTMENT OF INTERNAL AFFAIRS
TOPOGRAPHIC AND GEOLOGIC SURVEY

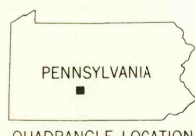
HOLLIDAYSBURG QUADRANGLE
PENNSYLVANIA—BLAIR CO
7.5 MINUTE SERIES (TOPOGRAPHIC)
NW/4 HOLLIDAYSBURG 15' QUADRANGLE



Mapped, edited, and published by the Geological Survey
Control by USGS and USC&GS
Topography by photogrammetric methods from aerial photographs
taken 1962. Field checked 1963
Polyconic projection. 1927 North American datum
10,000-foot grid based on Pennsylvania coordinate system,
south zone
1000-meter Universal Transverse Mercator grid ticks,
zone 17, shown in blue
Fine red dashed lines indicate selected fence and field lines where
generally visible on aerial photographs. This information is unchecked
Red tint indicates areas in which only landmark buildings are shown



ROAD CLASSIFICATION
Heavy-duty ——— Light-duty ———
Medium-duty ——— Unimproved dirt ———
U.S. Route ——— State Route ———



HOLLIDAYSBURG, PA.
NW/4 HOLLIDAYSBURG 15' QUADRANGLE
N4022.5—W7822.5/7.5

1963
AMS 5364 IV NW—SERIES V831

THIS MAP COMPLIES WITH NATIONAL MAP ACCURACY STANDARDS
FOR SALE BY U.S. GEOLOGICAL SURVEY, WASHINGTON, D. C. 20242
A FOLDER DESCRIBING TOPOGRAPHIC MAPS AND SYMBOLS IS AVAILABLE ON REQUEST