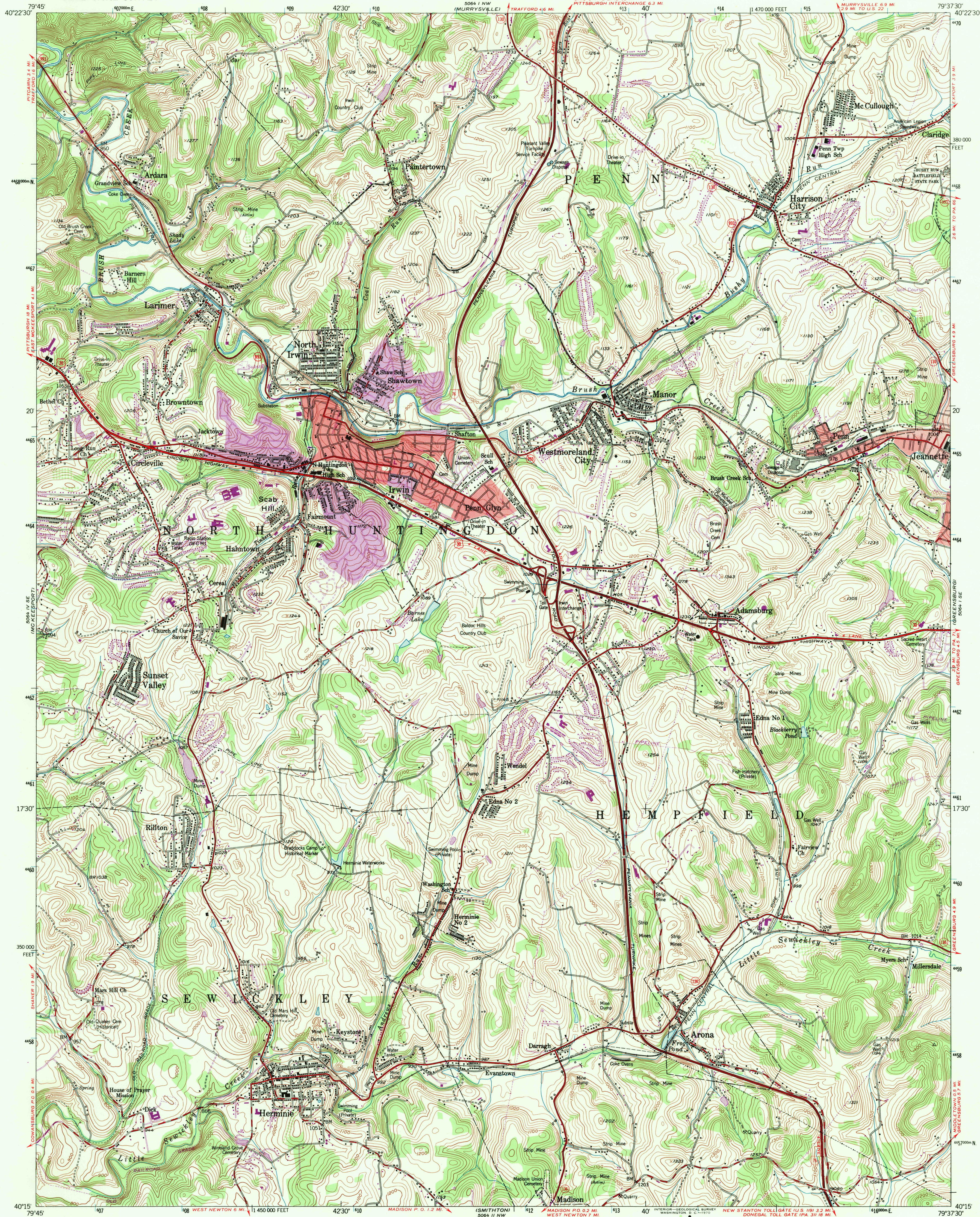


UNITED STATES
DEPARTMENT OF THE INTERIOR
GEOLOGICAL SURVEY

IRWIN QUADRANGLE
PENNSYLVANIA—WESTMORELAND CO
7.5 MINUTE SERIES (TOPOGRAPHIC)
SW/4 GREENSBURG 15 QUADRANGLE



Mapped, edited, and published by the Geological Survey

Control by USGS and USC&GS

Topography from aerial photographs by multiplex methods
Aerial photographs taken 1952. Field check 1953

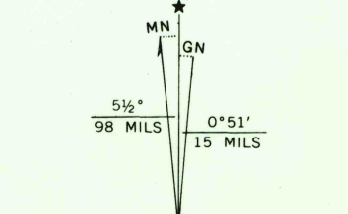
Polyconic projection. 1927 North American datum
10,000-foot grid based on Pennsylvania coordinate system, south zone
1000-meter Universal Transverse Mercator grid ticks, zone 17,
shown in blue

Red tint indicates areas in which only landmark buildings are shown

Revisions shown in purple compiled in cooperation with
State of Pennsylvania agencies from aerial photographs taken 1969

This information not field checked

Purple tint indicates extension of urban areas

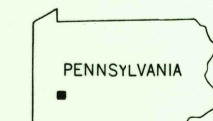


SCALE 1:24,000
0 1000 2000 3000 4000 5000 6000 7000 FEET
0 5 10 KILOMETER

CONTOUR INTERVAL 20 FEET
DATUM IS MEAN SEA LEVEL

THIS MAP COMPLIES WITH NATIONAL MAP ACCURACY STANDARDS
FOR SALE BY U.S. GEOLOGICAL SURVEY, WASHINGTON, D.C. 20242
A FOLDER DESCRIBING TOPOGRAPHIC MAPS AND SYMBOLS IS AVAILABLE ON REQUEST

USGS
HISTORICAL FILE
TOPOGRAPHIC DIVISION



ROAD CLASSIFICATION
Heavy-duty ——— Light-duty ———
Medium-duty ——— Unimproved dirt ———
Interstate Route U.S. Route State Route

U.S.G.S.
IRWIN, PA.
SW/4 GREENSBURG 15 QUADRANGLE
N4015—W7937.5/7.5
1953
PHOTOREVISED 1969
AMS 5064 1 SW—SERIES V831

4840
MAY 1 1970