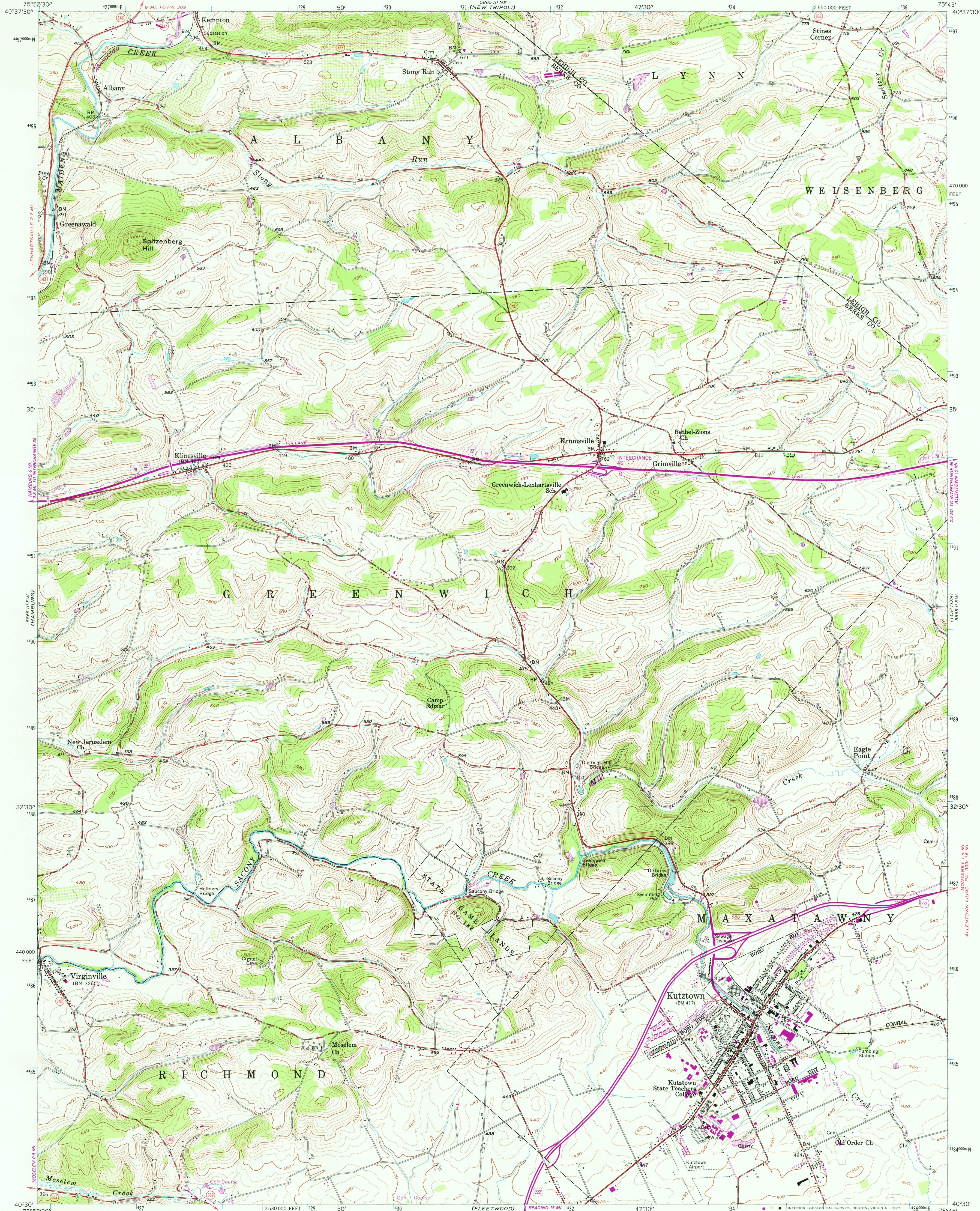


UNITED STATES
DEPARTMENT OF THE INTERIOR
GEOLOGICAL SURVEY

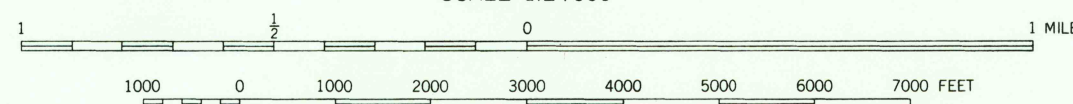
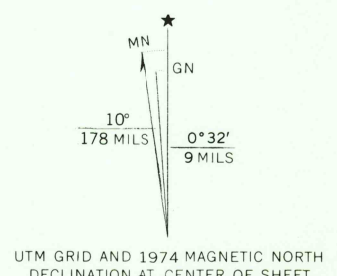
KUTZTOWN QUADRANGLE
PENNSYLVANIA
7.5 MINUTE SERIES (TOPOGRAPHIC)
SE/4 HAMBURG 15' QUADRANGLE



Mapped, edited, and published by the Geological Survey
Control by USGS and USC&GS

Topography from aerial photographs by multiplex methods
Aerial photographs taken 1951. Field check 1956
Polyconic projection. 1927 North American datum
10,000-foot grid based on Pennsylvania coordinate system,
south zone
1000-meter Universal Transverse Mercator grid ticks,
zone 18, shown in blue

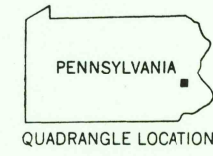
Revisions shown in purple compiled in cooperation with
State of Pennsylvania agencies from aerial photographs
taken 1969 and 1974. This information not field checked



CONTOUR INTERVAL 20 FEET
NATIONAL GEODETIC VERTICAL DATUM OF 1929

THIS MAP COMPLIES WITH NATIONAL MAP ACCURACY STANDARDS
FOR SALE BY U.S. GEOLOGICAL SURVEY, RESTON, VIRGINIA 22092
A FOLDER DESCRIBING TOPOGRAPHIC MAPS AND SYMBOLS IS AVAILABLE ON REQUEST

ROAD CLASSIFICATION
Heavy-duty ——— Light-duty ———
Medium-duty ——— Unimproved dirt ———
U.S. Route ——— State Route ———
Interstate Route ———



USGS
Historical File
Topographic Division

KUTZTOWN, PA.
SE/4 HAMBURG 15' QUADRANGLE
N4030-W7545/7.5

1956
PHOTOREVISED 1989 AND 1974
AMS 5865 III SE-SERIES V831

FEB 17 1978
3800