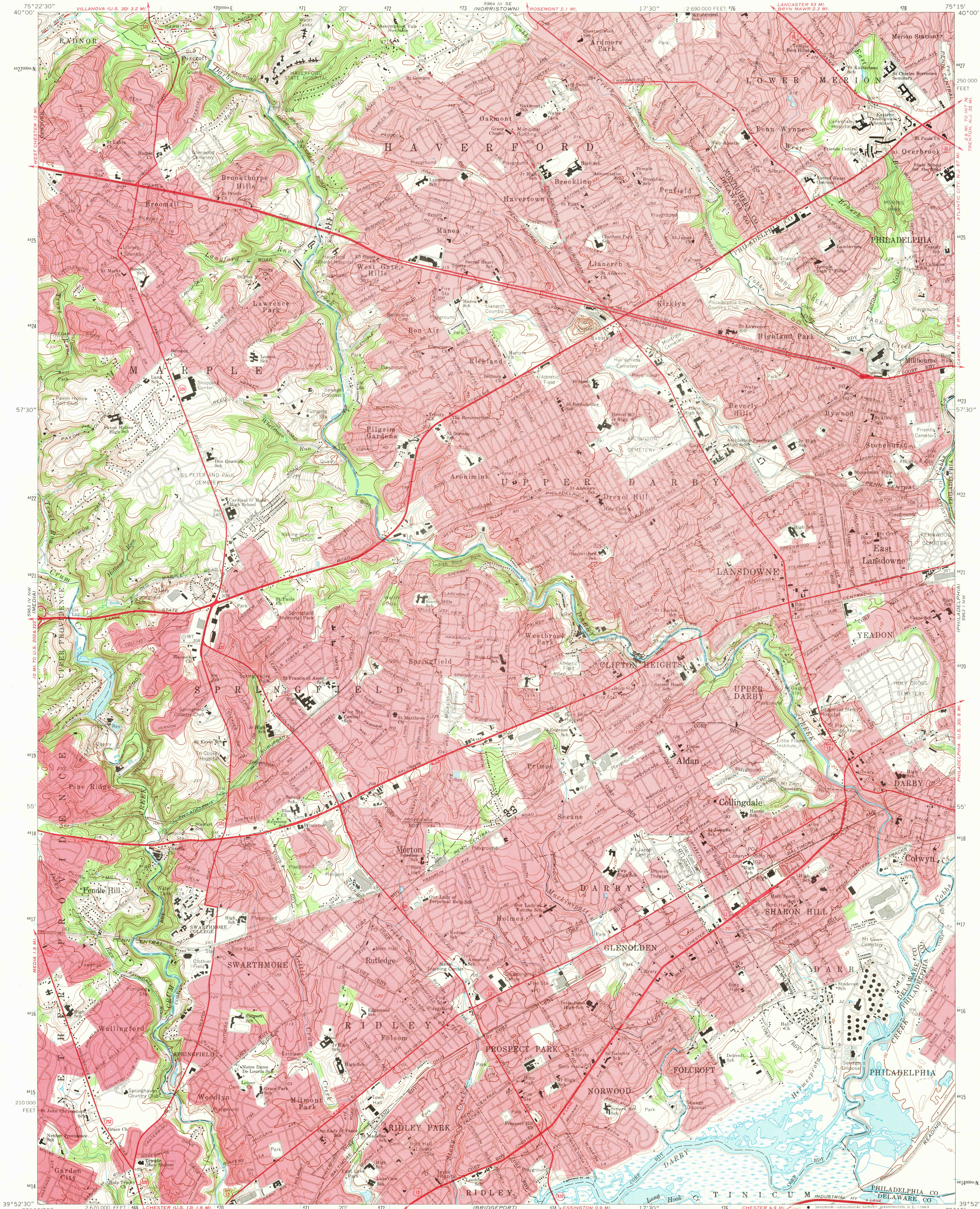


UNITED STATES
DEPARTMENT OF THE INTERIOR
GEOLOGICAL SURVEY

LANSDOWNE QUADRANGLE
PENNSYLVANIA
7.5 MINUTE SERIES (TOPOGRAPHIC)
NE 1/4 CHESTER 15' QUADRANGLE

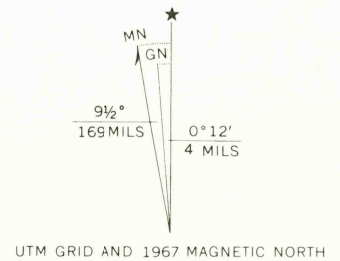


Mapped, edited, and published by the Geological Survey
Control by USGS and USC&GS

Topography by planetable surveys 1939-1940. Revised from
aerial photographs taken 1965. Field checked 1967

Polyconic projection. 1927 North American datum
10,000-foot grid based on Pennsylvania coordinate system, south zone
1000-meter Universal Transverse Mercator grid ticks,
zone 18, shown in blue

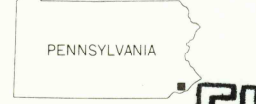
Red tint indicates areas in which only landmark buildings are shown



CONTOUR INTERVAL 10 FEET
DATUM IS MEAN SEA LEVEL

THIS MAP COMPLES WITH NATIONAL MAP ACCURACY STANDARDS
FOR SALE BY U.S. GEOLOGICAL SURVEY, WASHINGTON, D. C. 20242
A FOLDER DESCRIBING TOPOGRAPHIC MAPS AND SYMBOLS IS AVAILABLE ON REQUEST

USGS
Historical File
Topographic Division



U.S.G.S.
FILE COPY
TOPOGRAPHIC DIVISION

ROAD CLASSIFICATION
Heavy-duty ——— Light-duty ———
Medium-duty ——— Unimproved dirt ———
U.S. Route ——— State Route ———

LANSDOWNE, PA.
NE 1/4 CHESTER 15' QUADRANGLE
N3952.5-W7515.7.5

1967
AMS 5963 IV NE-SERIES 8V81