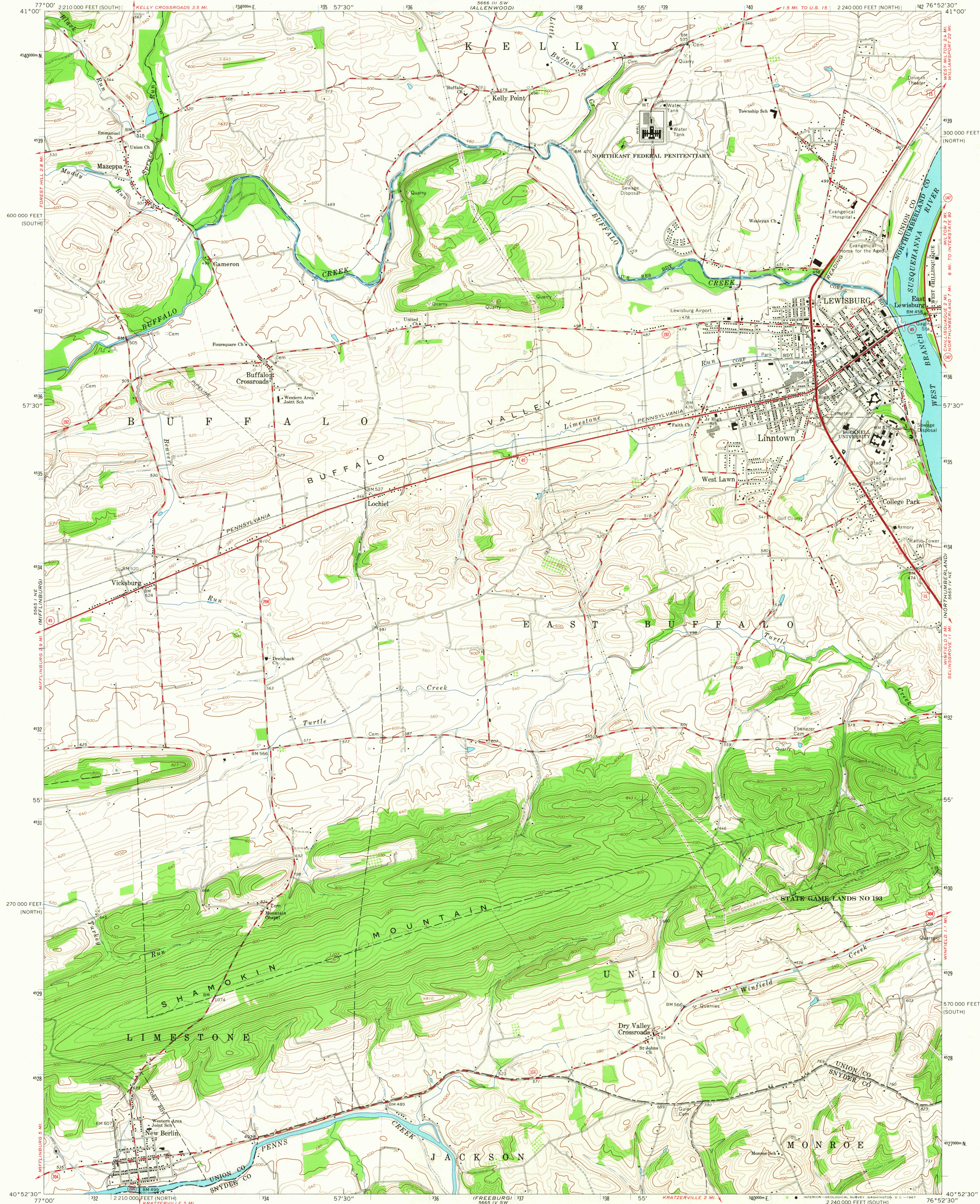


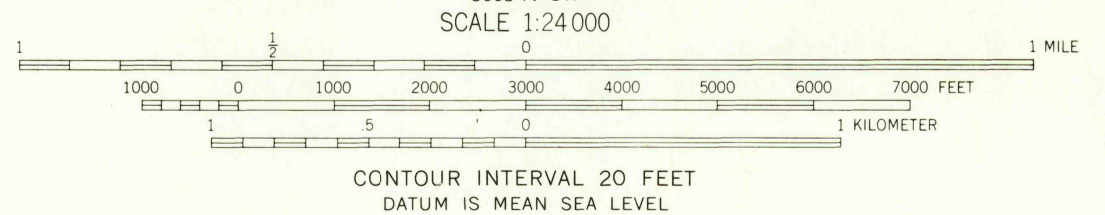
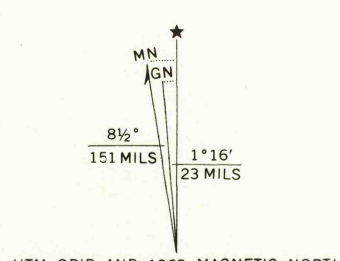
UNITED STATES
DEPARTMENT OF THE INTERIOR
GEOLOGICAL SURVEY

STATE OF PENNSYLVANIA
DEPARTMENT OF INTERNAL AFFAIRS
TOPOGRAPHIC AND GEOLOGIC SURVEY

LEWISBURG QUADRANGLE
PENNSYLVANIA
7.5 MINUTE SERIES (TOPOGRAPHIC)
NW/4 SUNBURY 15' QUADRANGLE



Mapped, edited, and published by the Geological Survey
Control by USGS and USC&GS
Topography by photogrammetric methods from aerial
photographs taken 1963. Field checked 1965
Polyconic projection. 1927 North American datum
10,000-foot grids based on Pennsylvania coordinate system,
north and south zones
1000-meter Universal Transverse Mercator grid ticks,
zone 18, shown in blue
Fine red dashed lines indicate selected fence and field lines where
generally visible on aerial photographs. This information is unchecked



USGS
Historical Files
Topographic Division

USGS
FILE COPY
TOPOGRAPHIC DIVISION

ROAD CLASSIFICATION
Heavy-duty ——— Light-duty ———
Medium-duty ——— Unimproved dirt ———
U.S. Route ——— State Route ———

LEWISBURG, PA.
NW/4 SUNBURY 15' QUADRANGLE
N4052.5—W7652.5/7.5

1965
AMS 5665 IV NW—SERIES V831

THIS MAP COMPLIES WITH NATIONAL MAP ACCURACY STANDARDS
FOR SALE BY U.S. GEOLOGICAL SURVEY, WASHINGTON, D.C. 20242
A FOLDER DESCRIBING TOPOGRAPHIC MAPS AND SYMBOLS IS AVAILABLE ON REQUEST