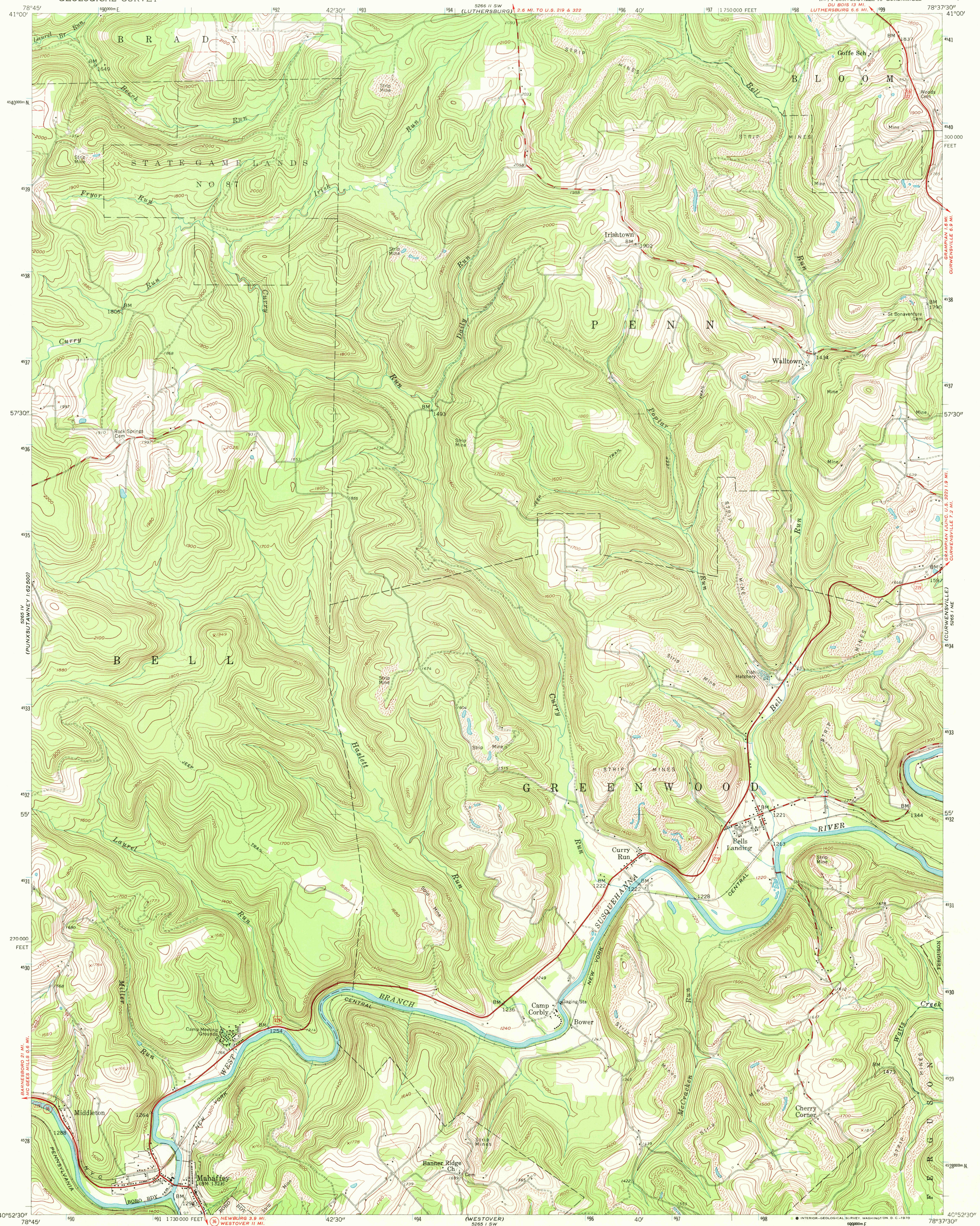
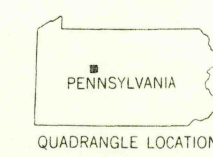
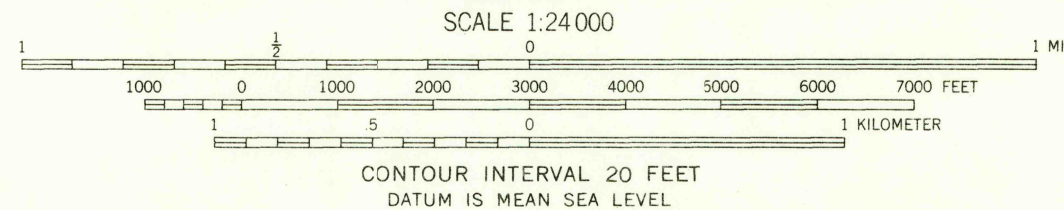
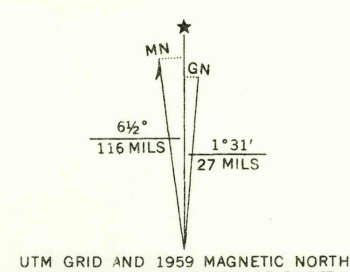


UNITED STATES
DEPARTMENT OF THE INTERIOR
GEOLOGICAL SURVEY

MAHAFFEY QUADRANGLE
PENNSYLVANIA—CLEARFIELD CO.
7.5 MINUTE SERIES (TOPOGRAPHIC)
NW 1/4 CURWENSVILLE 15' QUADRANGLE
DU BOIS 12 MI.
LUTHERSBURG 6.6 MI.
CURWENSVILLE 6.9 MI.
GRAMPAN 1.8 MI.
CURWENSVILLE 7.2 MI.



Mapped, edited, and published by the Geological Survey
Control by USGS and USC&GS
Topography from aerial photographs by photogrammetric methods
Aerial photographs taken 1957. Field check 1959
Polyconic projection. 1927 North American datum
10,000-foot grid based on Pennsylvania coordinate system,
north zone
1000-meter Universal Transverse Mercator grid ticks,
zone 17, shown in blue
Fine red dashed lines indicate selected fence and field lines
visible on aerial photographs. This information is unchecked



ROAD CLASSIFICATION	
Heavy-duty	Light-duty
Medium-duty	Unimproved dirt
U. S. Route	State Route

MAHAFFEY, PA.
NW 1/4 CURWENSVILLE 15' QUADRANGLE
N 4052.5—W 7837.5/7.5
1959
AMS 5265 I NW—SERIES V631

USGS
HISTORICAL FILE
TOPOGRAPHIC DIVISION
APR 3 1972
910
TO