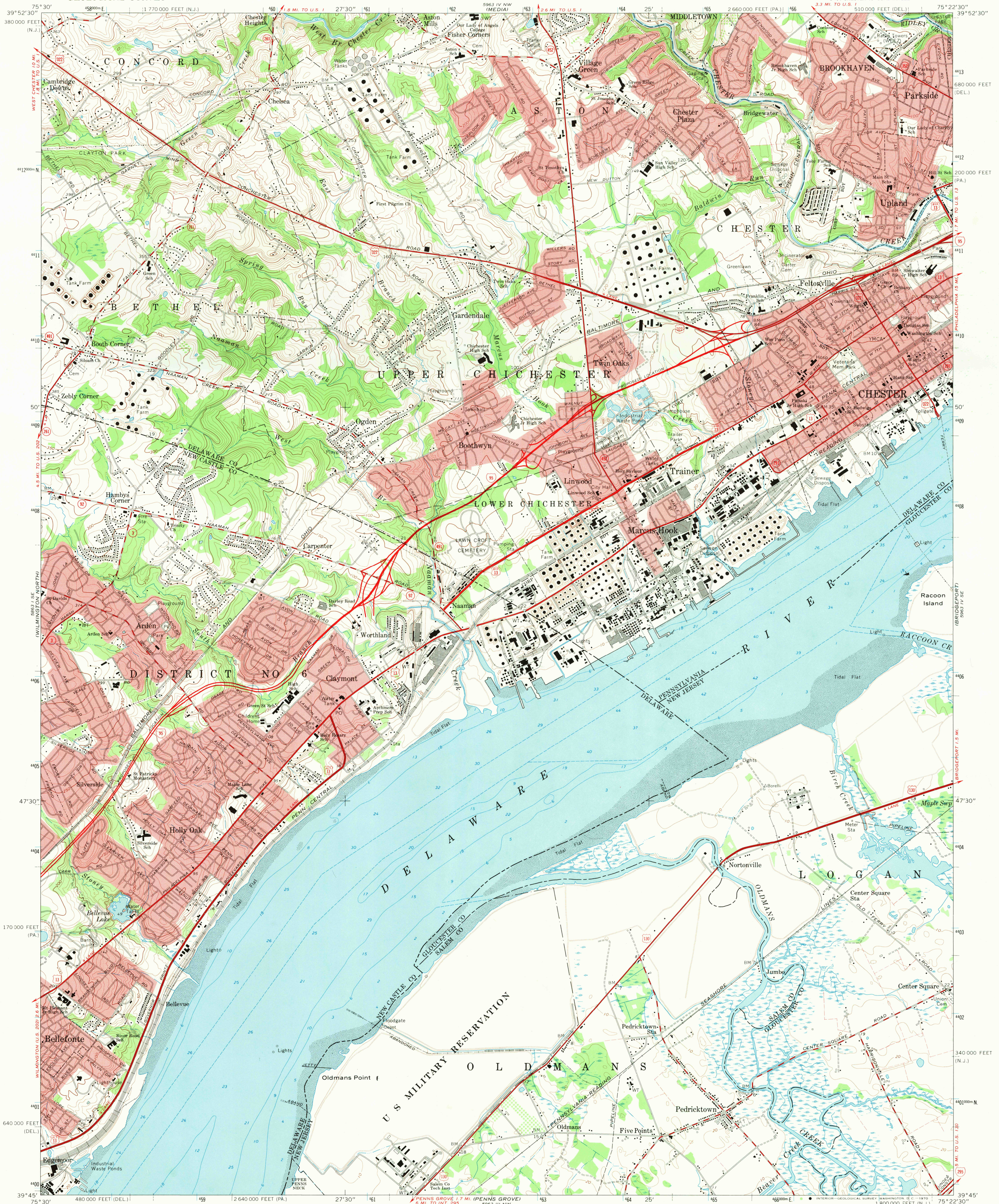
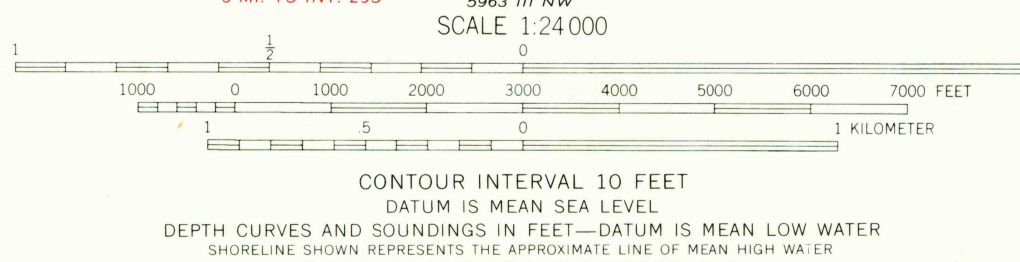


UNITED STATES
DEPARTMENT OF THE INTERIOR
GEOLOGICAL SURVEY

MARCUS HOOK QUADRANGLE
PENNSYLVANIA-NEW JERSEY-DELAWARE
7.5 MINUTE SERIES (TOPOGRAPHIC)



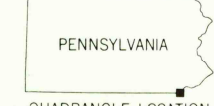
Mapped, edited, and published by the Geological Survey
Control by USGS, USC&GS, USCE, and New Jersey Geodetic Survey
Topography by planetable surveys 1939. Revised from aerial
photographs taken 1965. Field checked 1967
Selected hydrographic data compiled from USC&GS Chart 295 (1967)
This information is not intended for navigational purposes
Polyconic projection. 1927 North American datum
10,000-foot grids based on Pennsylvania coordinate system, south zone,
New Jersey coordinate system, and Delaware coordinate system
1000-meter Universal Transverse Mercator grid ticks,
zone 18, shown in blue
Fine red dashed lines indicate selected fence and field lines where
generally visible on aerial photographs. This information is unchecked
Red tint indicate areas in which only landmark buildings are shown



USGS
Historical File
Topographic Division

ROAD CLASSIFICATION

Heavy-duty	Light-duty
Medium-duty	Unimproved dirt
Interstate Route	U.S. Route
	State Route



U.S.G.S. MARCUS HOOK, PA.—N.J.—DEL.
SW/4 CHESTER 15' QUADRANGLE
N3945—W7522.5/7.5
1967
MS 5963 IV SW—SERIES V831

JUL 7 1970

4150