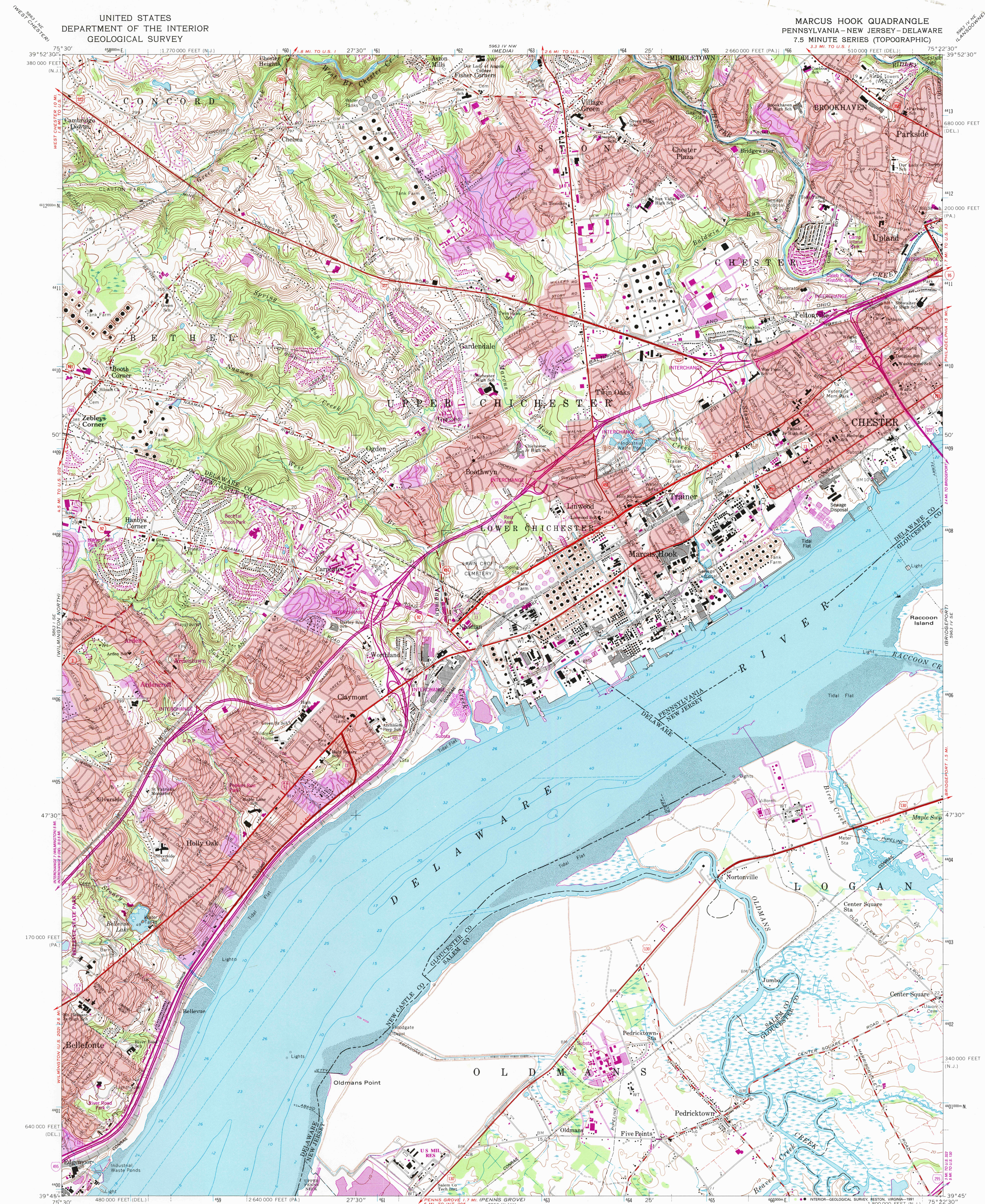


UNITED STATES
DEPARTMENT OF THE INTERIOR
GEOLOGICAL SURVEY

MARCUS HOOK QUADRANGLE
PENNSYLVANIA-NEW JERSEY-DELAWARE
7.5 MINUTE SERIES (TOPOGRAPHIC)



Maped, edited, and published by the Geological Survey
Control by USGS, NOS/NOAA, USCE, and New Jersey Geodetic Survey
Topography by planimetric surveys 1939. Revised from aerial
photographs taken 1965. Field checked 1967
Selected hydrographic data compiled from NOS chart 295 (1967)
This information is not intended for navigational purposes
Polyconic projection. 10,000-foot grid ticks based on Pennsylvania
coordinate system, south zone. New Jersey coordinate system,
and Delaware coordinate system
1000-meter Universal Transverse Mercator grid ticks,
zone 18, shown in blue
1927 North American Datum
To place on the predicted North American Datum 1983
move the projection lines 6 meters south and
31 meters west as shown by dashed corner ticks
Fine red dashed lines indicate selected fence and field lines where
generally visible on aerial photographs. This information is unchecked
Red tint indicates areas in which only landmark buildings are shown
There may be private inholdings within the boundaries of
the National or State reservations shown on this map

UTM GRID AND 1986 MAGNETIC NORTH
DECLINATION AT CENTER OF SHEET
11° 19' 19" M
0° 17' 5" M
Revisions shown in purple and woodland compiled
from aerial photographs taken 1983 and other sources
This information not field checked. Map edited 1986
Purple tint indicates extension of urban areas

SCALE 1:24,000
CONTOUR INTERVAL 10 FEET
NATIONAL GEODETIC VERTICAL DATUM OF 1929
DEPTH CURVES AND SOUNDINGS IN FEET-DATUM IS MEAN LOW WATER
SHORLINE SHOWN REPRESENTS THE APPROXIMATE LINE OF MEAN HIGH WATER
THE MEAN RANGE OF TIDE IS APPROXIMATELY 5.6 FEET
THIS MAP COMPLIES WITH NATIONAL MAP ACCURACY STANDARDS
FOR SALE BY U.S. GEOLOGICAL SURVEY 24092
DENVER, COLORADO 80225, OR RESTON, VIRGINIA 22092
A FOLDER DESCRIBING TOPOGRAPHIC MAPS AND SYMBOLS IS AVAILABLE ON REQUEST



ROAD CLASSIFICATION
Heavy-duty ——— Light-duty ———
Medium-duty ——— Unimproved dirt ———
Interstate Route U.S. Route State Route

MARCUS HOOK, PA. - N. J. - DEL.
39075-64-TF-024

1967
PHOTOREVISED 1986
DMA 5963 IV SW-SERIES V831

USGS AND HISTORICAL
MAP ARCHIVES
SEP 19 1991
REC'D FILE COPY