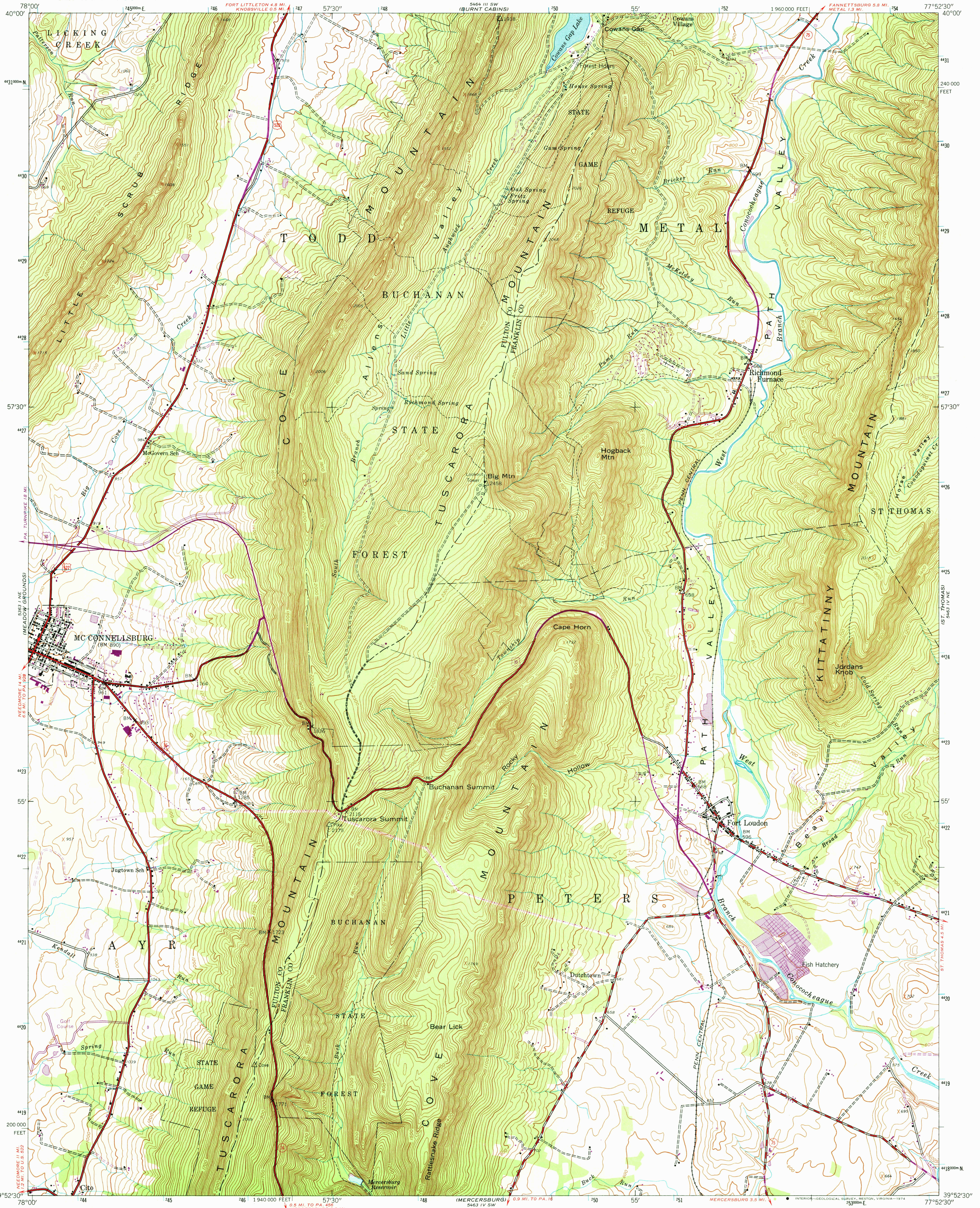


UNITED STATES
DEPARTMENT OF THE INTERIOR
GEOLOGICAL SURVEY

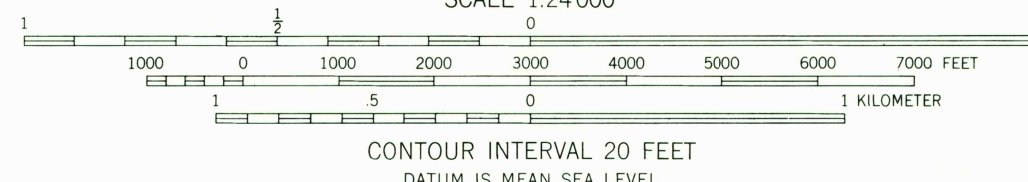
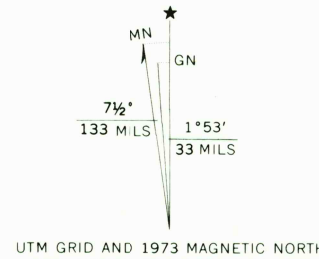
MC CONNELLSBURG QUADRANGLE
PENNSYLVANIA
7.5 MINUTE SERIES (TOPOGRAPHIC)



Mapped by the Army Map Service
Published for civil use by the Geological Survey
Control by USGS, USC&GS, and USFS

Topography from aerial photographs by photogrammetric methods
Aerial photographs taken 1943. Field check 1944
Polyconic projection. 1927 North American datum
10,000-foot grid based on Pennsylvania coordinate system, south zone
1000-meter Universal Transverse Mercator grid ticks,
zone 18, shown in blue

Revisions shown in purple compiled by the Geological Survey in
cooperation with State of Pennsylvania agencies, from aerial
photographs taken 1968 and 1973. This information not field checked



CONTOUR INTERVAL 20 FEET
DATUM IS MEAN SEA LEVEL



ROAD CLASSIFICATION
Heavy-duty ——— Light-duty ———
Medium-duty ——— Unimproved dirt ———
U. S. Route ——— State Route ———

USGS
Historical File
Topographic Division

MC CONNELLSBURG, PA.

N3952.5-W7752.5/7.5
1944

PHOTOREVISED 1968 AND 1973
AMS 5463 IV NW—SERIES V831

THIS MAP COMPLIES WITH NATIONAL MAP ACCURACY STANDARDS
FOR SALE BY U. S. GEOLOGICAL SURVEY, RESTON, VIRGINIA 22092
A FOLDER DESCRIBING TOPOGRAPHIC MAPS AND SYMBOLS IS AVAILABLE ON REQUEST

2630