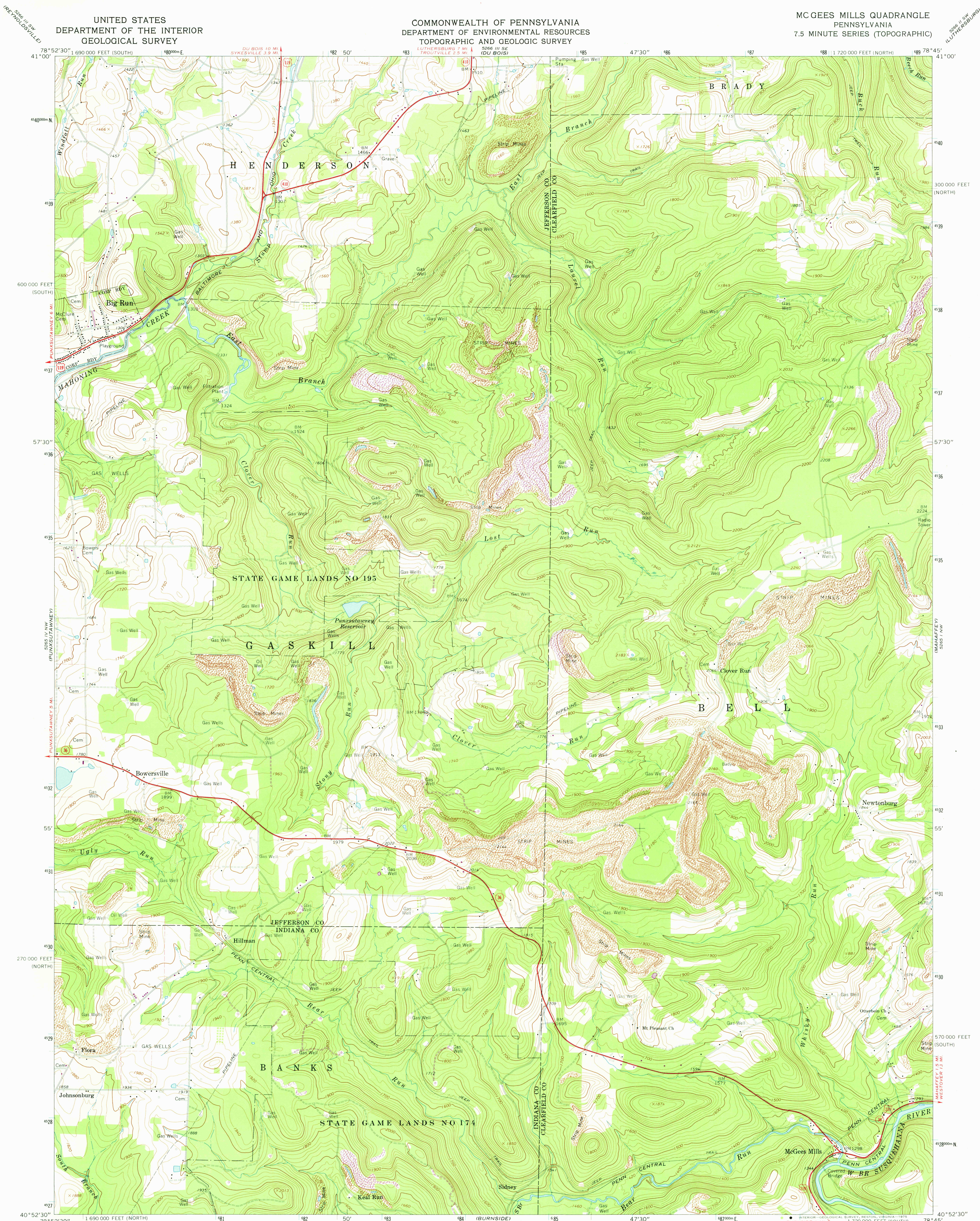


UNITED STATES
DEPARTMENT OF THE INTERIOR
GEOLOGICAL SURVEY

COMMONWEALTH OF PENNSYLVANIA
DEPARTMENT OF ENVIRONMENTAL RESOURCES
TOPOGRAPHIC AND GEOLOGIC SURVEY

MC GEES MILLS QUADRANGLE
PENNSYLVANIA
7.5 MINUTE SERIES (TOPOGRAPHIC)



Mapped, edited, and published by the Geological Survey

Control by USGS and USC&GS

Topography by photogrammetric methods from aerial

photographs taken 1967. Field checked 1968

Polyconic projection. 1927 North American datum

10,000-foot grids based on Pennsylvania coordinate system, north

and south zones

1000-meter Universal Transverse Mercator grid ticks, zone 17,

shown in blue

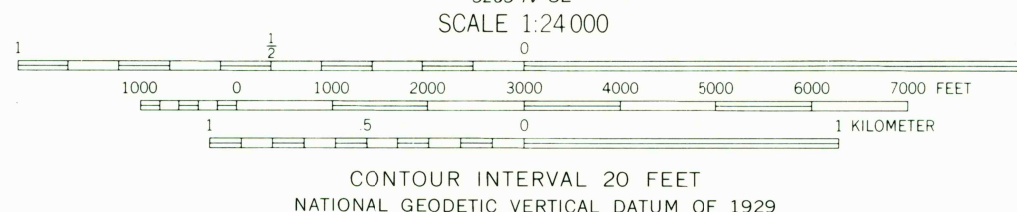
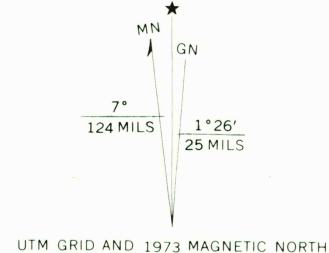
Fine red dashed lines indicate selected fence and field lines where

generally visible on aerial photographs. This information is unchecked

Revisions shown in purple compiled in cooperation with

State of Pennsylvania agencies from aerial photographs

taken 1973. This information not field checked



ROAD CLASSIFICATION	
Primary highway, all weather, hard surface	Light duty road, all weather, improved surface
Unimproved road, fair or dry weather	
U. S. Route	State Route

USGS
Historical File
Topographic Division

MC GEES MILLS, PA.

N4052.5—W7845/7.5

1968
PHOTOREVISED 1973

AMS 5265 IV NE—SERIES V831

THIS MAP COMPLIES WITH NATIONAL MAP ACCURACY STANDARDS
FOR SALE BY U. S. GEOLOGICAL SURVEY, RESTON, VIRGINIA 22092
A FOLDER DESCRIBING TOPOGRAPHIC MAPS AND SYMBOLS IS AVAILABLE ON REQUEST

JAN 4 1975

2965